



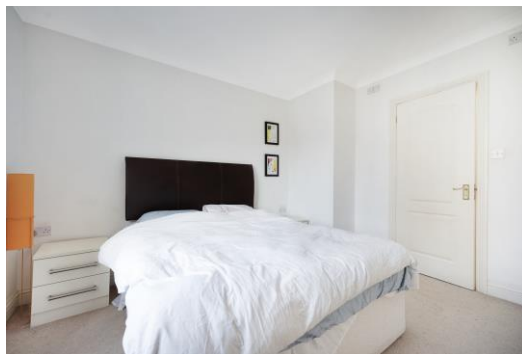
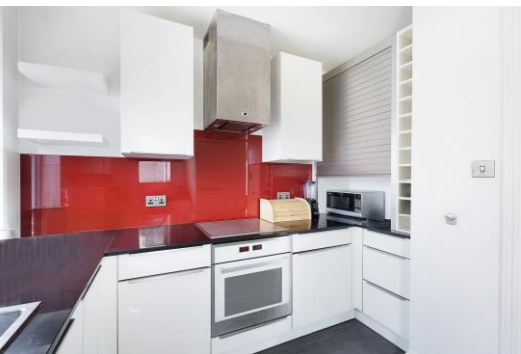
Trocette Mansions

249 Bermondsey Street, SE1

£2,600 per month
(£600 per week)

A two bedroom apartment situated in this sought after Bermondsey Street development. The property is available furnished & has been refurbished throughout to a high standard including a contemporary kitchen and bathrooms.

CHESTERTONS



Trocette Mansions

249 Bermondsey Street, SE1

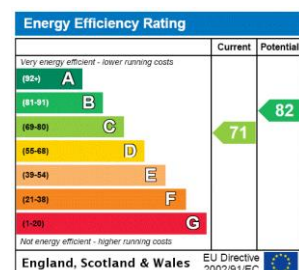
- Two Double Bedroom Apartment
- Two Bathrooms
- Available Furnished
- Contemporary Kitchen & Bathrooms
- Bermondsey Street Location
- Wood Flooring



A modern two bedroom apartment situated in this sought after Bermondsey Street development. The property is available furnished and has been tastefully refurbished throughout to a high standard including a contemporary kitchen and bathrooms.

The area is home to London's most iconic landmark, Tower Bridge and is within the vicinity of many attractions such as The Shard, Tate Modern and Tower of London. The development is a short walk to the delights of Bermondsey Street, Maltby Street & Borough markets. Although The City is within walking distance the area is well connected with excellent transport links via London Bridge & Tower Hill stations as-well as the river taxi.

Minimum Term: 12 months
Deposit Required: £3,000.00
Local Authority: London Borough of Southwark
Council Tax Band: E
EPC Rating: C
Furnished



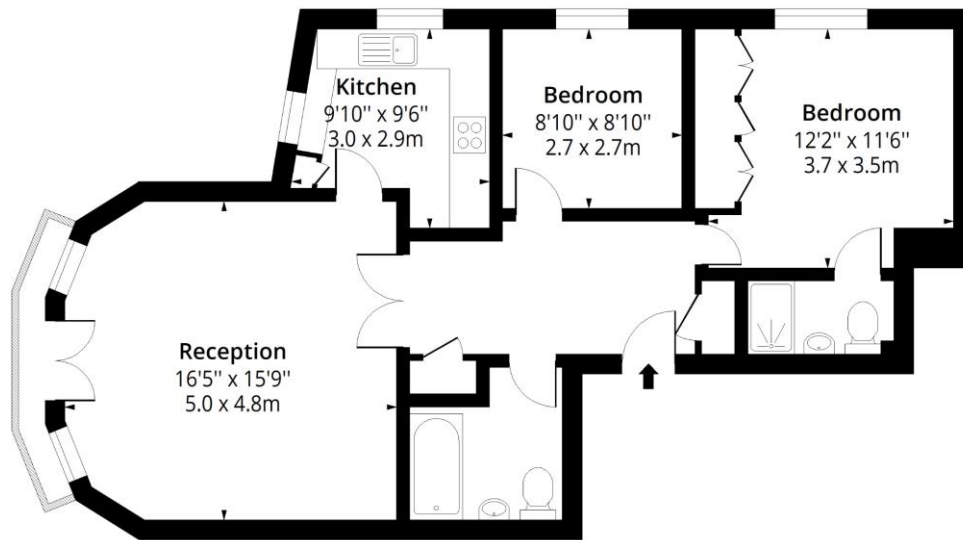
Chestertons Tower Bridge Lettings

220 Tower Bridge Road
Tower Bridge
London
SE1 2UP
towerbridgelettingsusers@chestertons.co.uk
02073576911
chestertons.co.uk

Additional tenant charges apply (fees apply to non-AST tenancies only)
Tenancy Agreement Fee: £300
References per Tenant/Guarantor: £60
Inventory check (approx. £100 – £250 inc. VAT)
chestertons.co.uk/property-to-rent/applicable-fees

Trocette Mansions, SE1

Approx. Gross Internal Area 778 Sq Ft - 72.28 Sq M



Second Floor

Floor Area 778 Sq Ft - 72.28 Sq M



Measured according to RICS IPMS2. Floor plan is for illustrative purposes only and is not to scale. Every attempt has been made to ensure the accuracy of the floor plan shown, however all measurements, fixtures, fittings and data shown are an approximate interpretation for illustrative purposes only. 1 sq m = 10.76 sq feet.

lpaplus.com

Date: 19/8/2024



This paper is
100% recyclable