



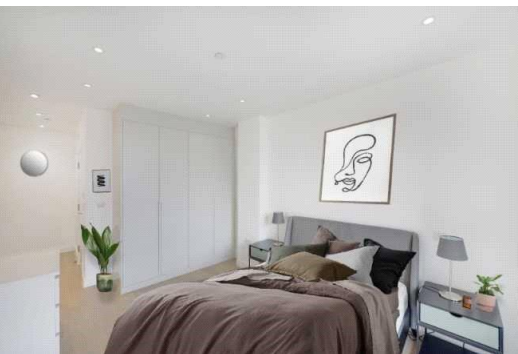
New Apex Court

47 Grange Walk, SE1

£2,700 per month
(£623.08 per week)

A contemporary two-bedroom two-bathroom apartment with balcony on the third floor of a highly desirable residential development.

CHESTERTONS



New Apex Court

47 Grange Walk, SE1

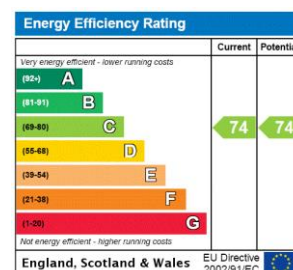
- FURNISHED
- TWO BEDROOM
- TWO BATHROOM



A contemporary two-bedroom two-bathroom apartment with balcony on the third floor of a highly desirable residential development.

Apex Court was constructed in 2020 and is ideally located for quick and easy access to Bermondsey Street, Maltby Street market, Tanner Street Park, Shad Thames, Bermondsey Square and Borough Market. Nearby transport links at London Bridge and Bermondsey Stations provide access for Jubilee and Northern underground lines plus National Rail.

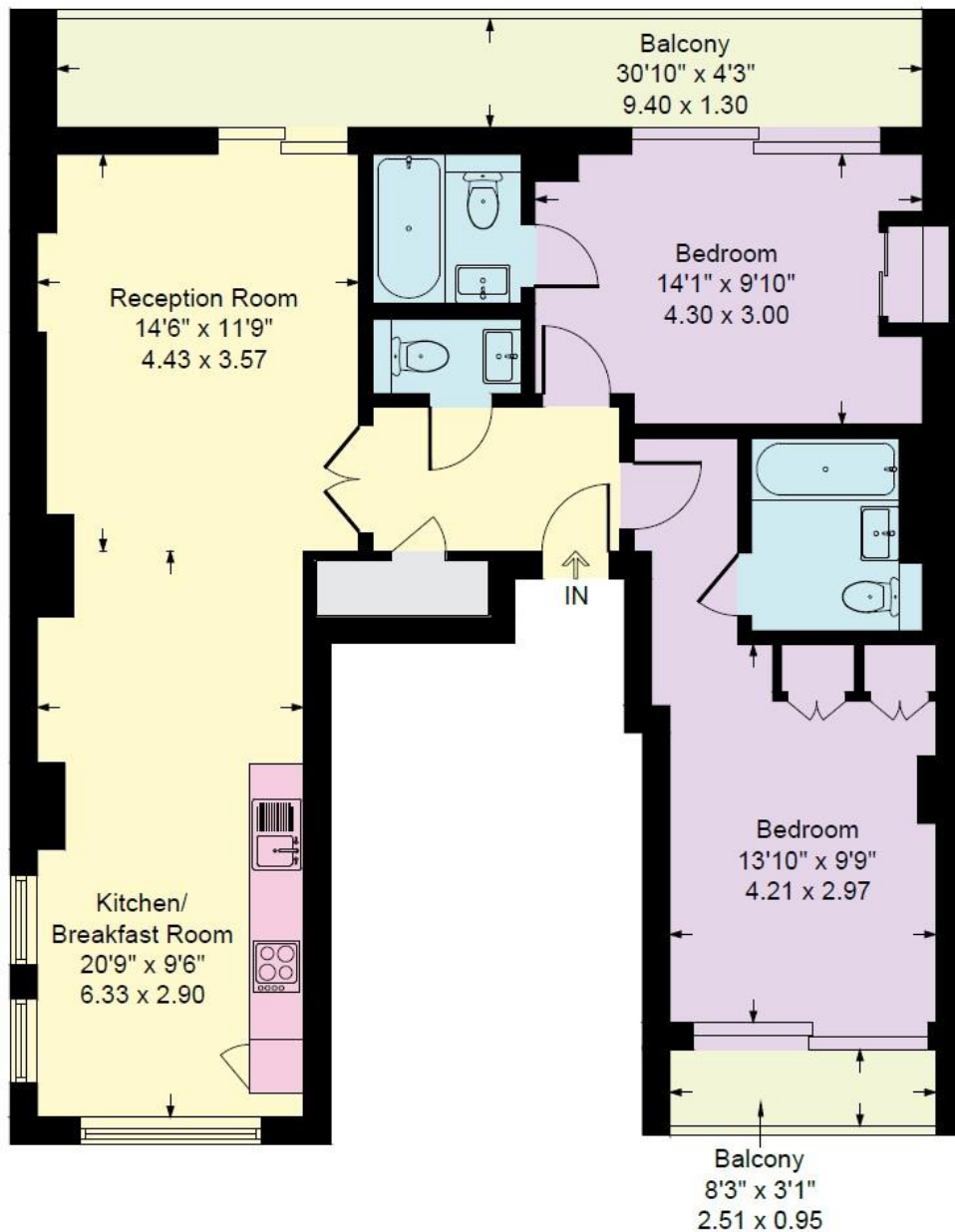
Minimum Term: 12 months
Deposit Required: £3,115.38
Local Authority: London Borough of Southwark
Council Tax Band: E
EPC Rating: C
Furnished



Chestertons Tower Bridge Lettings

220 Tower Bridge Road
 Tower Bridge
 London
 SE1 2UP
towerbridgelettingsusers@chestertons.co.uk
 02073576911
[chestertons.co.uk](https://www.chestertons.co.uk)

Additional tenant charges apply (fees apply to non-AST tenancies only)
 Tenancy Agreement Fee: £300
 References per Tenant/Guarantor: £60
 Inventory check (approx. £100 – £250 inc. VAT)
[chestertons.co.uk/property-to-rent/applicable-fees](https://www.chestertons.co.uk/property-to-rent/applicable-fees)



Third Floor
Approximate Floor Area

