



Harvard House

26 Alie Street, E1

£3,000 per month
(£692.31 per week)

A modern two bedroom, two bathroom apartment offered in excellent decorative condition throughout and ideally located moments from two underground stations and the vast connections Liverpool Street station has to offer.



Harvard House

26 Alie Street, E1

- Two Bedrooms
- Two Shower Rooms
- Modern Apartment
- Excellent Location
- SHORT LET



SHORT LET * A modern two bedroom, two bathroom apartment offered in excellent decorative condition throughout and ideally located moments from two underground stations and the vast connections Liverpool Street station has to offer.

Minimum Term: 2 months
Deposit Required: £3,461.54
Local Authority: Tower Hamlets
Council Tax Band: F
EPC Rating: D
Furnished

| Energy Efficiency Rating | | |
|---|---------|-----------|
| | Current | Potential |
| Very energy efficient - lower running costs | | |
| (94-100) A | | |
| (81-93) B | | |
| (69-80) C | | |
| (55-68) D | 63 | 63 |
| (39-54) E | | |
| (21-38) F | | |
| (1-20) G | | |
| Not energy efficient - higher running costs | | |
| England, Scotland & Wales EU Directive 2002/91/EC | | |

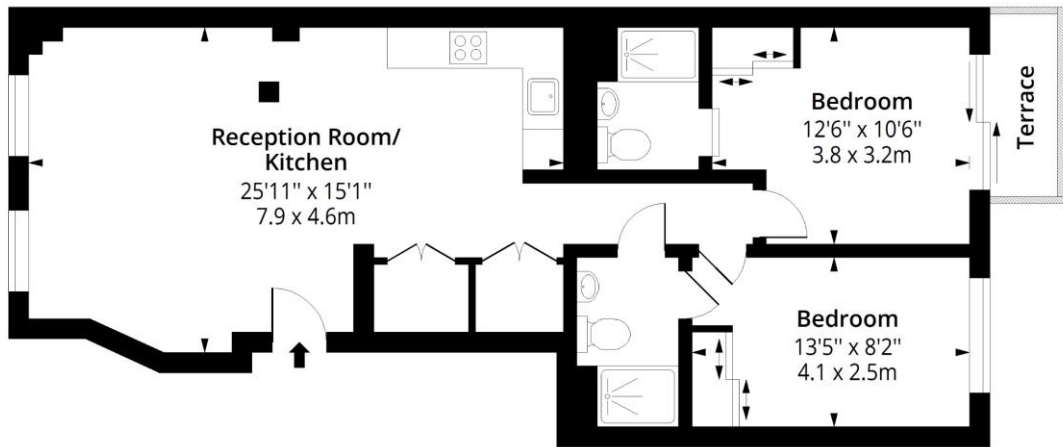
Chestertons Tower Bridge Lettings

220 Tower Bridge Road
 Tower Bridge
 London
 SE1 2UP
 towerbridge@chestertons.co.uk
 02073576911
 chestertons.co.uk

Additional tenant charges apply (fees apply to non-AST tenancies only)
 Tenancy Agreement Fee: £300
 References per Tenant/Guarantor: £60
 Inventory check (approx. £100 – £250 inc. VAT)
 chestertons.co.uk/property-to-rent/applicable-fees

Alie Street, N16

Approx. Gross Internal Area 763 Sq Ft - 70.88 Sq M
Approx. Gross Terrace Area 29 Sq Ft - 2.69 Sq M



Ground Floor

Floor Area 763 Sq Ft - 70.88 Sq M



Measured according to RICS IPMS2. Floor plan is for illustrative purposes only and is not to scale. Every attempt has been made to ensure the accuracy of the floor plan shown, however all measurements, fixtures, fittings and data shown are an approximate interpretation for illustrative purposes only. 1 sq m = 10.76 sq feet.

lpaplus.com

Date: 4/4/2023



This paper is
100% recyclable