



Wentworth Street

E1

£4,500 per month
(£1,038.46 per week)

A spacious property including two large double bedrooms with fitted wardrobes, modern integrated kitchen with bright open-plan reception area and two designer bathrooms. Exceptionally furnished throughout in immaculate condition.



Wentworth Street

E1

- SHORT LET
- TWO BEDROOM
- TWO BATHROOM
- FURNISHED
- ALL BILLS INCLUDED



A spacious property throughout including two large double bedrooms with fitted wardrobes, modern integrated kitchen with bright open-plan reception area and two designer bathrooms. Exceptionally furnished throughout in immaculate condition, benefiting from beautiful dark wood floors, large sound proof bay windows and security code entry system. Located on Wentworth Street on the very doorstep of Petticoat Market, the property firmly sits within an excellent location a stone's throw from the City, Spitalfields Market and the hustle and bustle of Brick Lane can also be found a short stroll away.

Minimum Term: 2 months
Deposit Required: £5,192.31
Local Authority: Tower Hamlets
Council Tax Band: C
EPC Rating: C
Furnished

Energy Efficiency Rating		
	Current	Potential
Very energy efficient - lower running costs		
(94-100) A		
(81-93) B		
(69-80) C	80	86
(55-68) D		
(39-54) E		
(21-38) F		
(1-20) G		
Not energy efficient - higher running costs		
England, Scotland & Wales EU Directive 2002/91/EC		

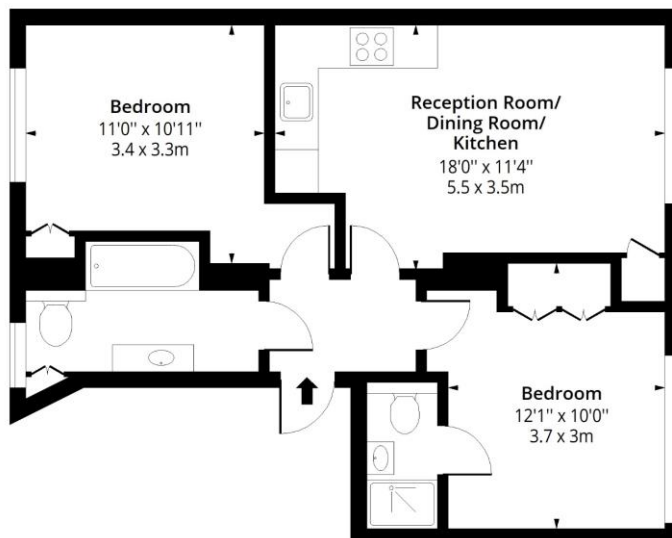
Chestertons Tower Bridge Lettings

220 Tower Bridge Road
 Tower Bridge
 London
 SE1 2UP
lettings.towerbridge@chestertons.co.uk
 02073576911
chestertons.co.uk

Additional tenant charges apply (fees apply to non-AST tenancies only)
 Tenancy Agreement Fee: £300
 References per Tenant/Guarantor: £60
 Inventory check (approx. £100 – £250 inc. VAT)
chestertons.co.uk/property-to-rent/applicable-fees

Wentworth Street, E1

Approx. Gross Internal Area 573 Sq Ft - 53.23 Sq M



First Floor

Floor Area 573 Sq Ft - 53.23 Sq M



Measured according to RICS IPMS2. Floor plan is for illustrative purposes only and is not to scale. Every attempt has been made to ensure the accuracy of the floor plan shown, however all measurements, fixtures, fittings and data shown are an approximate interpretation for illustrative purposes only. 1 sq m = 10.76 sq feet.

lpaplus.com

Date: 29/6/2023



This paper is
100% recyclable