



Axis Court

2 East Lane, SE16

£3,400 per month
(£784.62 per week)

A modern two double bedroom, two bathroom penthouse apartment situated on the top floor of this modern development. The apartment is available furnished and benefits from a private balcony with city and river views.

CHESTERTONS



Axis Court

2 East Lane, SE16

- • Two bedrooms
- • Two bathrooms
- • Top floor
- • Furnished
- • Private terrace with city & river views



A modern two double bedroom, two bathroom penthouse apartment situated on the top floor of this modern development. The apartment is available furnished and benefits from a private balcony with city and river views.

Shad Thames is a unique area steeped in history and character situated along the south side of the River Thames. The area is home to London's most iconic landmark, Tower Bridge and is within the vicinity of many attractions such as The Shard, Tate Modern and Tower of London. Shad Thames boasts a variety of bars and

Minimum Term: 12 months
Deposit Required: £3,923.08
Local Authority: Southwark Council
Council Tax Band: C
EPC Rating: To be confirmed
Furnished

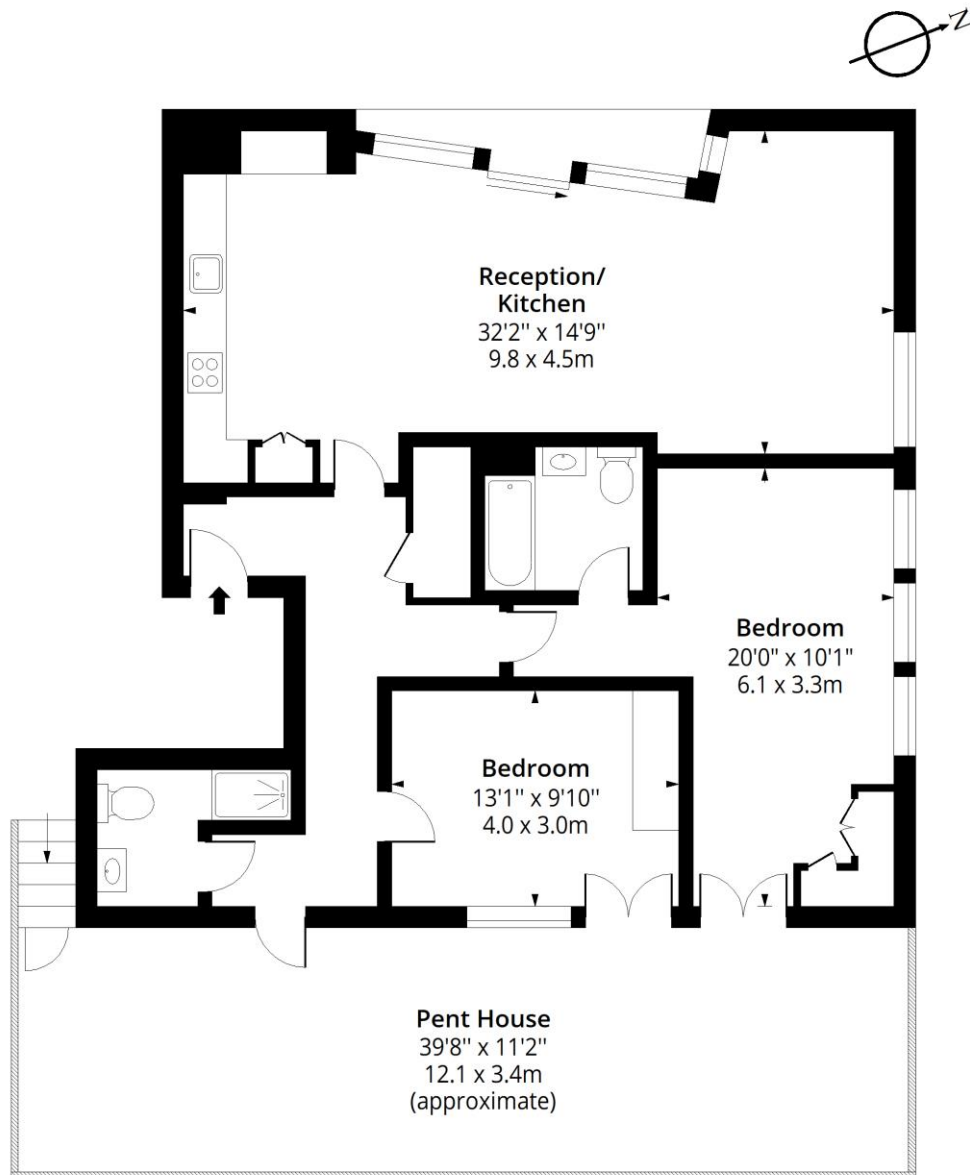
Chestertons Tower Bridge Lettings

220 Tower Bridge Road
Tower Bridge
London
SE1 2UP
towerbridgelettingsusers@chestertons.co.uk
02073576911
chestertons.co.uk

Additional tenant charges apply (fees apply to non-AST tenancies only)
Tenancy Agreement Fee: £300
References per Tenant/Guarantor: £60
Inventory check (approx. £100 – £250 inc. VAT)
[chestertons.co.uk/property-to-rent/applicable-fees](https://www.chestertons.co.uk/property-to-rent/applicable-fees)

Axis Court, SE16

Approx. Gross Internal Area 1089 Sq Ft - 101.17 Sq M



Sixth Floor

Floor Area 1089 Sq Ft - 101.17 Sq M



Measured according to RICS IPMS2. Floor plan is for illustrative purposes only and is not to scale. Every attempt has been made to ensure the accuracy of the floor plan shown, however all measurements, fixtures, fittings and data shown are an approximate interpretation for illustrative purposes only. 1 sq m = 10.76 sq feet.

lpaplus.com

Date: 24/5/2024