

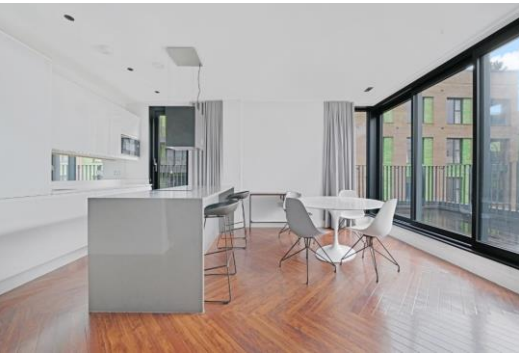


# Blackfriars Road

London, SE1

£5,100 per month  
(£1,176.92 per week)

A spectacular three bedroom apartment in the new build apartment moments from Southwark and Waterloo Stations. The property comprises open plan living space, three double bedrooms, two bathrooms and large balcony.



# Blackfriars Road

London, SE1

- THREE BEDROOM
- TWO BATHROOM
- BALCONY
- FURNISHED





A spectacular three bedroom apartment in the new build apartment moments from Southwark and Waterloo Stations. The property comprises open plan living space, three double bedrooms, two bathrooms and large balcony.

**Minimum Term:** 12 months  
**Deposit Required:** £0.00  
**Local Authority:** London Borough of Southwark  
**Council Tax Band:** F  
**EPC Rating:** B  
**Furnished**

Energy Efficiency Rating		Current	Potential
Very energy efficient - lower running costs			
(92-100)	A		
(81-91)	B	83	83
(69-80)	C		
(55-68)	D		
(39-54)	E		
(21-38)	F		
(1-20)	G		
Not energy efficient - higher running costs			
England, Scotland & Wales		EU Directive 2002/91/EC	

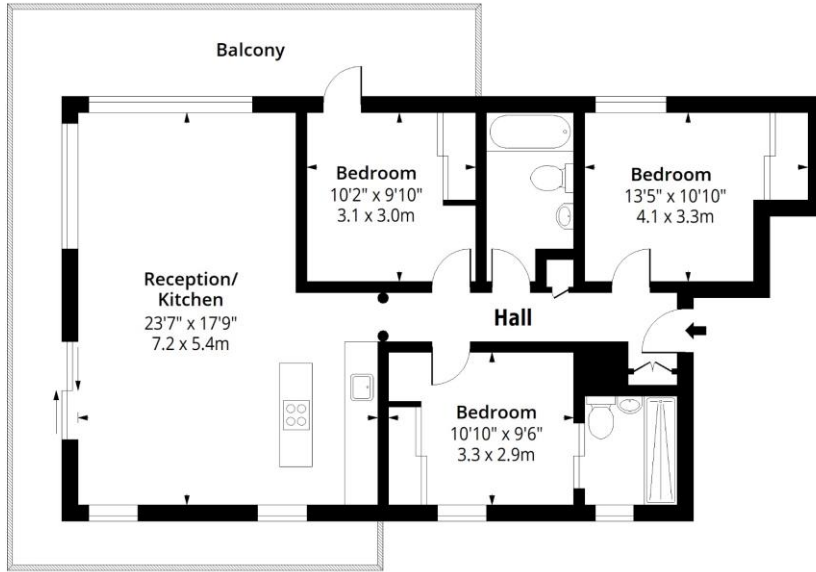
**Chestertons Tower Bridge Lettings**

220 Tower Bridge Road  
 Tower Bridge  
 London  
 SE1 2UP  
 towerbridge@chestertons.co.uk  
 02073576911  
 chestertons.co.uk

Additional tenant charges apply (fees apply to non-AST tenancies only)  
 Tenancy Agreement Fee: £300  
 References per Tenant/Guarantor: £60  
 Inventory check (approx. £100 – £250 inc. VAT)  
 chestertons.co.uk/property-to-rent/applicable-fees

# Blackfriars Road, SE1

Approx. Gross Internal Area 916 Sq Ft - 85.10 Sq M  
Approx. Gross Balcony Area 280 Sq Ft - 26.01 Sq M



## Fourth Floor

Floor Area 916 Sq Ft - 85.10 Sq M



Measured according to RICS IPMS2. Floor plan is for illustrative purposes only and is not to scale. Every attempt has been made to ensure the accuracy of the floor plan shown, however all measurements, fixtures, fittings and data shown are an approximate interpretation for illustrative purposes only. 1 sq m = 10.76 sq feet.

lpaplus.com

Date: 9/10/2024

Chesterton Global Ltd trading as Chestertons for themselves and for the vendor of this property whose agents they are, give notice that (i) these particulars do not constitute any part of an offer or contract, (ii) all statements contained within these particulars are made without responsibility on the part of Chestertons or the vendor, (iii) whilst made in good faith, none of the statements contained within these particulars are to be relied upon as a statement or representation of fact, (iv) any intending purchasers must satisfy themselves by inspection or otherwise as to the correctness of each of the statements contained within these particulars, (v) the vendor does not make or give either Chestertons or any person in their employment any authority to make or give representation or warranty whatsoever in relation to this property. Wide angle lenses may be used. ©Copyright Chestertons | Chesterton Global Ltd | Registered Office 40 Connaught Street, Hyde Park, London W2 2AB Registered Company Number 05334580.



This paper is  
100% recyclable