



Sussex House

3 Maidstone Buildings Mews, SE1

£3,500 per month
(£807.69 per week)

FAMILY ONLY- NO SHARERS An outstanding three double bedroom, two bathroom warehouse conversion set within this highly sought after gated development moments from London Bridge station and the vibrant Borough market.



Sussex House

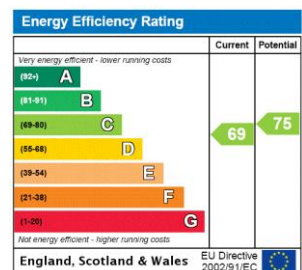
3 Maidstone Buildings Mews, SE1

- Three Double Bedroom Warehouse Conversion
- Two Bathrooms
- Central London Bridge Location
- Over approximately 1277 sq. ft



An outstanding three double bedroom, two bathroom warehouse conversion set within this highly sought after gated development moments from London Bridge station, Borough market and Bermondsey Street. This spacious apartment spans approximately 1277 sq. ft. providing ample space for those working from home with flexible living options. Boasting warehouse features such as exposed beams and brickwork the property comprises; large reception / dining room with contemporary open plan kitchen, master bedroom with en-suite shower room, large fitted wardrobes and Juliette balcony, two further double bedrooms and principal bathroom. Residents also benefit from an onsite porter.

Minimum Term: 12 months
Deposit Required: £4,038.46
Local Authority: London Borough of Southwark
Council Tax Band: G
EPC Rating: C
Furnished

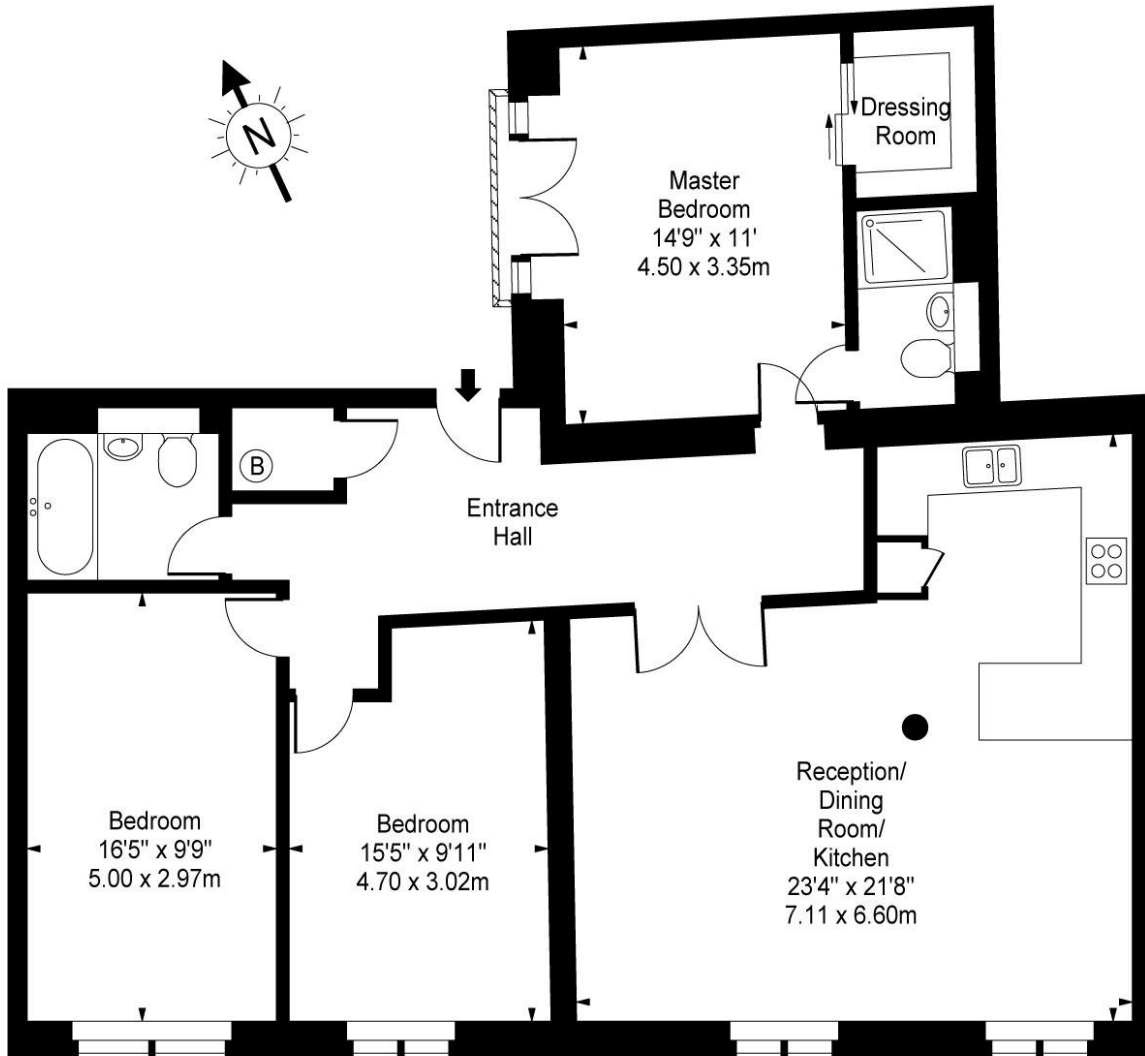


Chestertons Tower Bridge Lettings

220 Tower Bridge Road
 Tower Bridge
 London
 SE1 2UP
 towerbridge@chestertons.co.uk
 02073576911
 chestertons.co.uk

Additional tenant charges apply (fees apply to non-AST tenancies only)
 Tenancy Agreement Fee: £300
 References per Tenant/Guarantor: £60
 Inventory check (approx. £100 – £250 inc. VAT)
 chestertons.co.uk/property-to-rent/applicable-fees

Sussex House, Maidstone Buildings Mews, SE1



First Floor

Approx Gross Internal Area **1277 Sq Ft - 118.63 Sq M**

For Illustration Purposes Only - Not To Scale

www.goldlens.co.uk

Ref. No. 010394J

