



New Caledonian Wharf

6 Odessa Street, SE16

£3,000 per month
(£692.31 per week)

This stunning three-bedroom penthouse boasts breathtaking panoramic views of the River Thames and Canary Wharf.

CHESTERTONS



New Caledonian Wharf

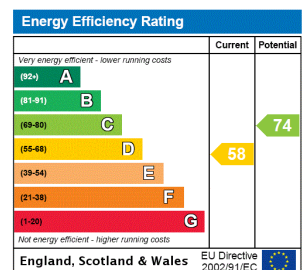
6 Odessa Street, SE16

- THREE BEDROOMS
- TWO BATHROOMS
- FURNISHED
- PENTHOUSE



This stunning three-bedroom penthouse boasts breath-taking panoramic views of the River Thames and Canary Wharf.

Minimum Term: 6 months
Deposit Required: £3,461.54
Local Authority: London Borough of Southwark
Council Tax Band: F
EPC Rating: D



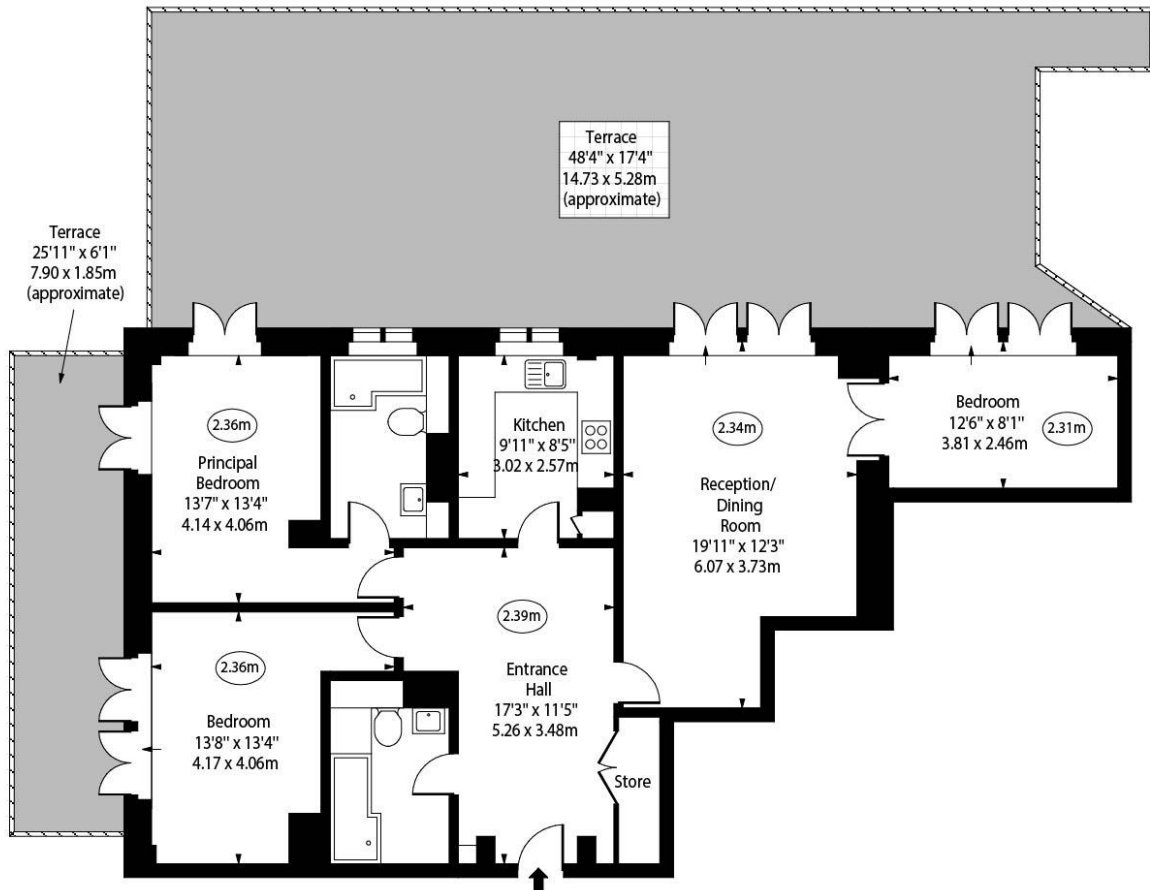
Chestertons Tower Bridge Lettings

220 Tower Bridge Road
 Tower Bridge
 London
 SE1 2UP
 towerbridge@chestertons.co.uk
 02073576911
 chestertons.co.uk

Additional tenant charges apply (fees apply to non-AST tenancies only)
 Tenancy Agreement Fee: £300
 References per Tenant/Guarantor: £60
 Inventory check (approx. £100 – £250 inc. VAT)
 chestertons.co.uk/property-to-rent/applicable-fees

New Caledonian Wharf,
Odessa Street, SE16

○ - Ceiling Height



Seventh Floor

Approx Gross Internal Area 1078 Sq Ft - 100.15 Sq M

For Illustration Purposes Only - Not To Scale
www.goldlens.co.uk
Ref. No. 025335M

