



New Concordia Wharf

Mill Street, SE1

£1,650 pcm

A beautifully presented studio apartment situated within this historic 19th century warehouse conversion. The property maintains many of its original features including exposed brick work, oak beams and original cast iron windows. This stunning property further benefits from views of St Saviours Dock and the river Thames and a communal roof terrace. Located within close proximity to London Bridge station and the local amenities of Shad Thames.

CHESTERTONS



New Concordia Wharf

Mill Street, SE1

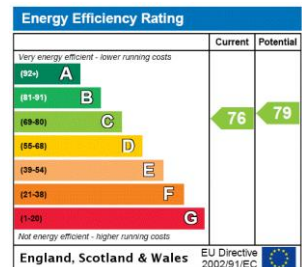
- Studio Apartment
- Warehouse Conversion
- St Saviours Dock and River Views
- Available Furnished
- Communal Roof Terrace



Shad Thames is a unique area steeped in history and character situated along the south side of the River Thames. The area is home to London's most iconic landmark, Tower Bridge and is within the vicinity of many attractions such as The Shard, Tate Modern and Tower of London. Shad Thames boasts a variety of bars and restaurants and is a short walk to the delights of Bermondsey Street, Maltby Street & Borough markets. Although The City is within walking distance the area is well connected with excellent transport links via London Bridge & Tower Hill stations as-well as the river taxi.

Tenure: To be advised
Furnished

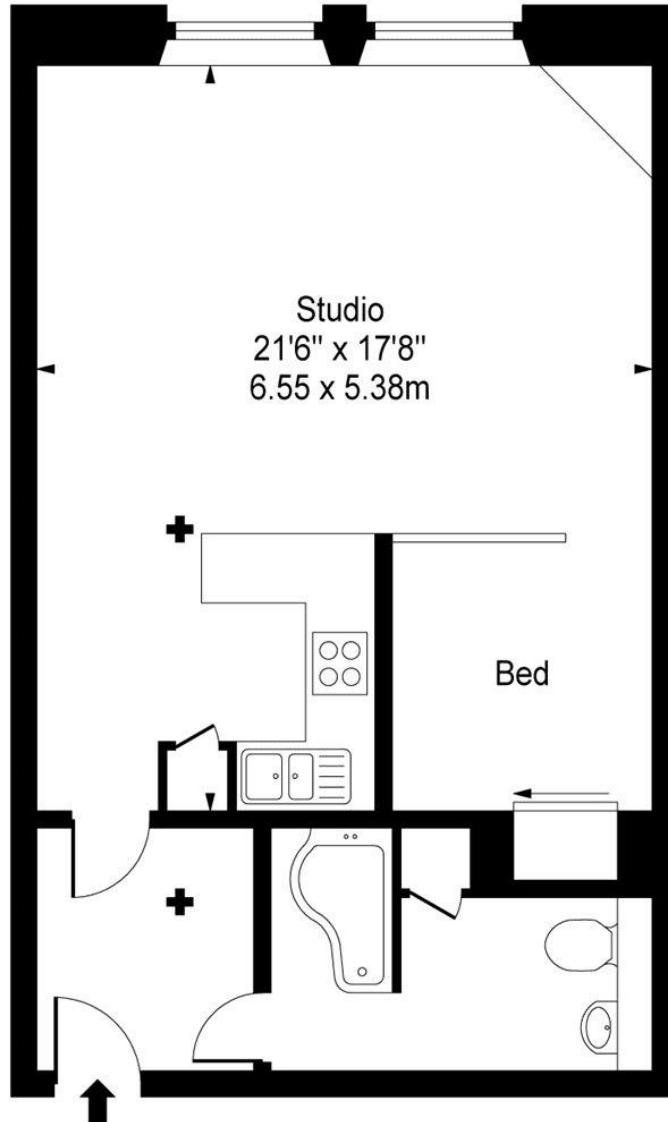
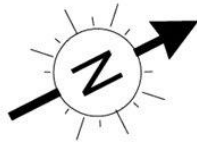
Additional tenant charges apply (fees apply to non-AST tenancies only)
 Tenancy Agreement Fee: £300
 References per Tenant/Guarantor: £60
 Inventory check (approx. £100 – £250 inc. VAT)
[chestertons.com/property-to-rent/applicable-fees](https://www.chestertons.com/property-to-rent/applicable-fees)



Chestertons Tower Bridge Lettings

220 Tower Bridge Road
 Tower Bridge
 London
 SE1 2UP
lettings.towerbridge@chestertons.com
 02073576911
[chestertons.com](https://www.chestertons.com)

New Concordia Wharf, Mill Street, SE1



Second Floor

Approx Gross Internal Area **512 Sq Ft - 47.56 Sq M**

For Illustration Purposes Only - Not To Scale

www.goldlens.co.uk

Ref. No. 009063Ga

