



Clements Road
London, SE16

CHESTERTONS



A beautiful furnished house located a short walk from Bermondsey station. The property features a large reception room, separate kitchen, private garden, three double bedrooms and a modern bathroom. EPC Rating E.

- Three bedroom house
- Available furnished
- Large reception room
- Wooden flooring
- Separate kitchen
- Private garden

£3,000 pcm

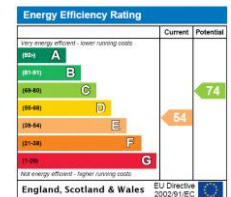
Additional tenant charges apply (fees apply to non-AST tenancies only)

Tenancy Agreement Fee: £300

References per Tenant/Guarantor: £60

Inventory check (approx. £100 – £250 inc. VAT)

chestertons.co.uk/property-to-rent/applicable-fees



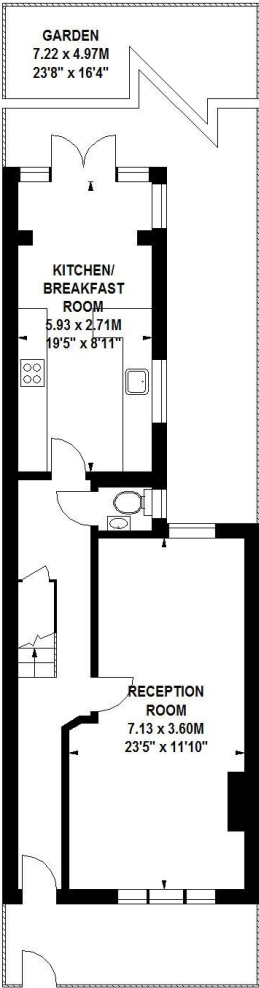
Minimum Term: 6 months
Deposit Required: £3,461.54
Local Authority: London Borough of Southwark
Council Tax Band: D
EPC Rating: E
Furnished

Chestertons Tower Bridge Lettings

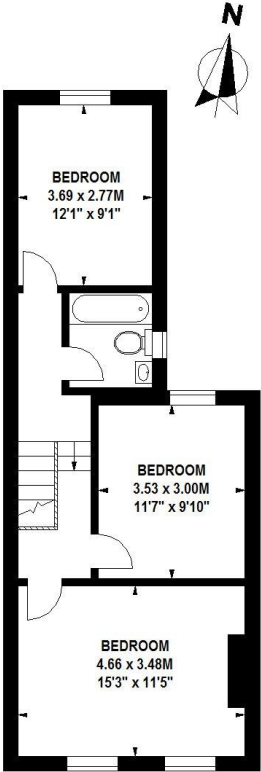
220 Tower Bridge Road
Tower Bridge
London
SE1 2UP
towerbridge@chestertons.co.uk
02073576911

Clements Road, SE16

Approximate gross internal area
104 sq m / 1119 sq ft



Ground Floor



First Floor

Floor Plan produced for Chestertons by Mays Floorplans © . Tel 020 3397 4594
Illustration for identification purposes only, not to scale
All measurements are maximum, and include wardrobes and window bays where applicable

Chesterton Global Ltd trading as Chestertons for themselves and for the vendor of this property whose agents they are, give notice that (i) these particulars do not constitute any part of an offer or contract, (ii) all statements contained within these particulars are made without responsibility on the part of Chestertons or the vendor, (iii) whilst made in good faith, none of the statements contained within these particulars are to be relied upon as a statement or representation of fact, (iv) any intending purchasers must satisfy themselves by inspection or otherwise as to the correctness of each of the statements contained within these particulars, (v) the vendor does not make or give either Chestertons or any person in their employment any authority to make or give representation or warranty whatsoever in relation to this property. Wide angle lenses may be used. ©Copyright Chestertons | Chesterton Global Ltd | Registered Office 40 Connaught Street, Hyde Park, London W2 2AB Registered Company Number 05334580.

