



# The Circle

Queen Elizabeth Street, SE1

£2,500 per month  
(£576.92 per week)

A beautiful and bright one bedroom apartment benefiting from an amazing balcony, bedroom with fitted wardrobes, 24 hour concierge.

**CHESTERTONS**





# The Circle

Queen Elizabeth Street, SE1

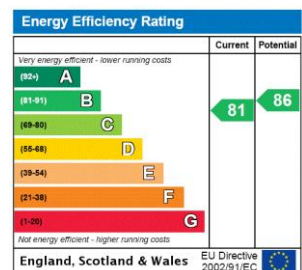
- ONE BEDROOM
- BALCONY
- FURNISHED



A beautiful and bright one bedroom apartment benefiting from an amazing balcony. The apartment is arranged within this popular Shad Thames development with 24 concierge and is offered in immaculate condition throughout. Comprising, light living room with doors to large balcony, semi open plan kitchen, double bedroom with fitted wardrobe and bathroom.

Shad Thames is a unique area steeped in history and character situated along the south side of the River Thames. The area is home to London's most iconic landmark, Tower Bridge and is within the vicinity of many attractions such as The Shard, Tate Modern and Tower of London. Shad Thames boasts a variety of bars and restaurants and is a short walk to the delights of Bermondsey Street, Maltby Street & Borough markets. Although The City is within walking distance the area is well connected with excellent transport links via London Bridge & Tower Hill stations as well as the river taxi.

**Minimum Term:** 10 months  
**Deposit Required:** £2,884.62  
**Local Authority:** London Borough of Southwark  
**Council Tax Band:** D  
**EPC Rating:** B  
**Furnished**



### Chestertons Tower Bridge Lettings

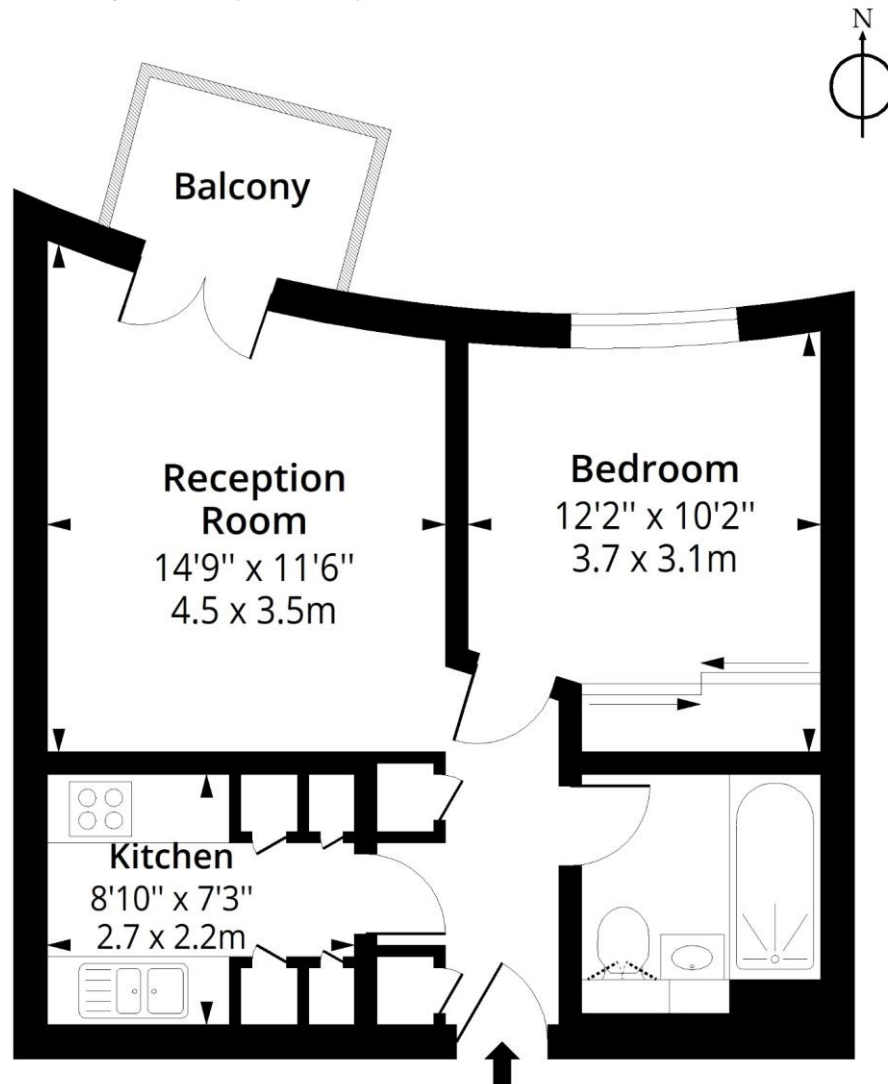
220 Tower Bridge Road  
 Tower Bridge  
 London  
 SE1 2UP  
 towerbridge@chestertons.co.uk  
 02073576911  
 chestertons.co.uk

Additional tenant charges apply (fees apply to non-AST tenancies only)  
 Tenancy Agreement Fee: £300  
 References per Tenant/Guarantor: £60  
 Inventory check (approx. £100 – £250 inc. VAT)  
 chestertons.co.uk/property-to-rent/applicable-fees

# The circle, Queen Elizabeth, SE1

Approx. Gross Internal Area 453 Sq Ft - 42.08 Sq M

Approx. Gross Balcony Area 31 Sq Ft - 2.88 Sq M



## Third Floor

Floor Area 453 Sq Ft - 42.08 Sq M



Measured according to RICS IPMS2. Floor plan is for illustrative purposes only and is not to scale. Every attempt has been made to ensure the accuracy of the floor plan shown, however all measurements, fixtures, fittings and data shown are an approximate interpretation for illustrative purposes only. 1 sq m = 10.76 sq feet.

[ipaplus.com](http://ipaplus.com)

Date: 5/7/2023

Chesterton Global Ltd trading as Chestertons for themselves and for the vendor of this property whose agents they are, give notice that (i) these particulars do not constitute any part of an offer or contract, (ii) all statements contained within these particulars are made without responsibility on the part of Chestertons or the vendor, (iii) whilst made in good faith, none of the statements contained within these particulars are to be relied upon as a statement or representation of fact, (iv) any intending purchasers must satisfy themselves by inspection or otherwise as to the correctness of each of the statements contained within these particulars, (v) the vendor does not make or give either Chestertons or any person in their employment any authority to make or give representation or warranty whatsoever in relation to this property. Wide angle lenses may be used. ©Copyright Chestertons | Chesterton Global Ltd |

Registered Office 40 Connaught Street, Hyde Park, London W2 2AB Registered Company Number 05334580.



This paper is 100% recyclable