



Belfield Mansions

35 Heygate Street, SE17

£2,999 per month
(£692.08 per week)

A stunning brand new two bedroom and two bathroom apartment in Belfield Mansions, Park & Sayer, Elephant & Castle.

CHESTERTONS



Belfield Mansions

35 Heygate Street, SE17

- TWO BEDROOM
- TWO BATHROOM
- BRAND NEW
- CONCIERGE
- LIFT



Park & Sayer is at the centre of the evolving and revitalised Elephant & Castle. An energised community of parks and restaurants, galleries and markets, shops and cafes at the heart of London.

Minimum Term: 12 months
Deposit Required: £3,460.38
Local Authority: London Borough of Southwark
Council Tax Band: E
EPC Rating: B

Energy Efficiency Rating		Current	Potential
Very energy efficient - lower running costs			
(92-100)	A		
(81-91)	B	86	86
(69-80)	C		
(55-68)	D		
(39-54)	E		
(21-38)	F		
(1-20)	G		
Not energy efficient - higher running costs			
England, Scotland & Wales		EU Directive 2002/91/EC	

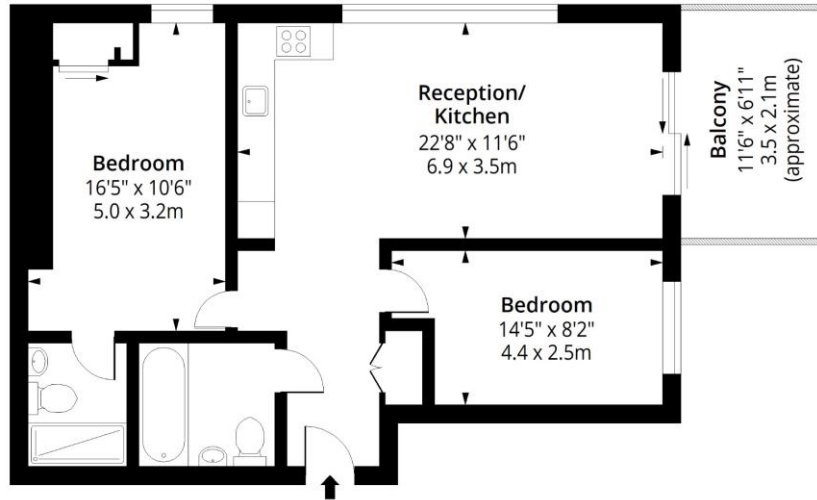
Chestertons Tower Bridge Lettings

220 Tower Bridge Road
 Tower Bridge
 London
 SE1 2UP
 towerbridge@chestertons.co.uk
 02073576911
 chestertons.co.uk

Additional tenant charges apply (fees apply to non-AST tenancies only)
 Tenancy Agreement Fee: £300
 References per Tenant/Guarantor: £60
 Inventory check (approx. £100 – £250 inc. VAT)
chestertons.co.uk/property-to-rent/applicable-fees

Belfield Mansions, SE17

Approx. Gross Internal Area 732 Sq Ft - 68.00 Sq M
Approx. Gross Balcony Area 79 Sq Ft - 7.34 Sq M



Fifth Floor

Floor Area 732 Sq Ft - 68.00 Sq M



Measured according to RICS IPMS2. Floor plan is for illustrative purposes only and is not to scale. Every attempt has been made to ensure the accuracy of the floor plan shown, however all measurements, fixtures, fittings and data shown are an approximate interpretation for illustrative purposes only. 1 sq m = 10.76 sq feet.

lpaplus.com

Date: 15/7/2024



This paper is 100% recyclable