



# Queen Elizabeth Street

London, SE1

£6,500 per month  
(£1,500 per week)

SHORT LET\* Rare to the market, this is a well presented modernised three double bedroom end of terraced house. Set over 3 floors the property comes with an allocated parking space and private rear garden. Ideally located for the City & London Bridge.





# Queen Elizabeth Street

London, SE1

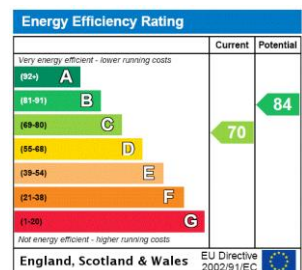
- SHORT LET
- HOUSE
- THREE BEDROOM
- GARDEN
- FURNISHED
- NEWLY DECORATED





SHORT LET\* Rare to the market, this is a well presented modernised three double bedroom end of terraced house. Set over 3 floors the property comes with an allocated parking space and private rear garden. Ideally located for the City & London Bridge.

**Minimum Term:** 2 months  
**Deposit Required:** £7,500.00  
**Local Authority:** London Borough Of Southwark (Council Tax)  
**Council Tax Band:** F  
**EPC Rating:** C  
**Furnished**



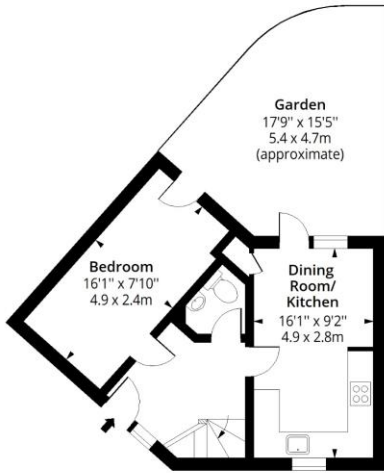
### Chestertons Tower Bridge Lettings

220 Tower Bridge Road  
 Tower Bridge  
 London  
 SE1 2UP  
 lettings.towerbridge@chestertons.co.uk  
 02073576911  
 chestertons.co.uk

Additional tenant charges apply (fees apply to non-AST tenancies only)  
 Tenancy Agreement Fee: £300  
 References per Tenant/Guarantor: £60  
 Inventory check (approx. £100 – £250 inc. VAT)  
[chestertons.co.uk/property-to-rent/applicable-fees](http://chestertons.co.uk/property-to-rent/applicable-fees)

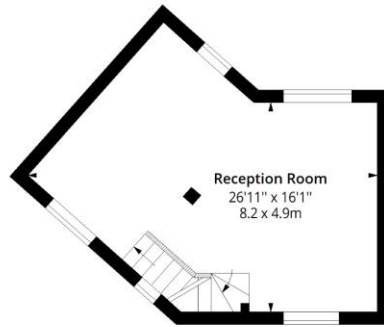
# Queen Elizabeth Street, SE1

Approx. Gross Internal Area 1185 Sq Ft - 110.10 Sq M



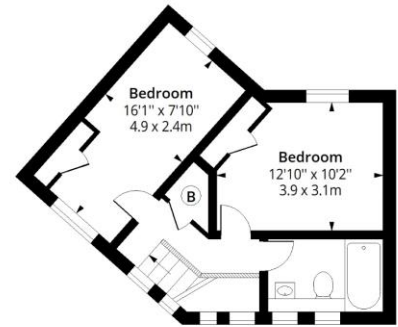
**Ground Floor**

Floor Area 395 Sq Ft - 36.70 Sq M



**First Floor**

Floor Area 395 Sq Ft - 36.70 Sq M



**Second Floor**

Floor Area 395 Sq Ft - 36.70 Sq M



Measured according to RICS IPMS2. Floor plan is for illustrative purposes only and is not to scale. Every attempt has been made to ensure the accuracy of the floor plan shown, however all measurements, fixtures, fittings and data shown are an approximate interpretation for illustrative purposes only. 1 sq m = 10.76 sq feet.

lpaplus.com

Date: 21/2/2023



This paper is 100% recyclable