



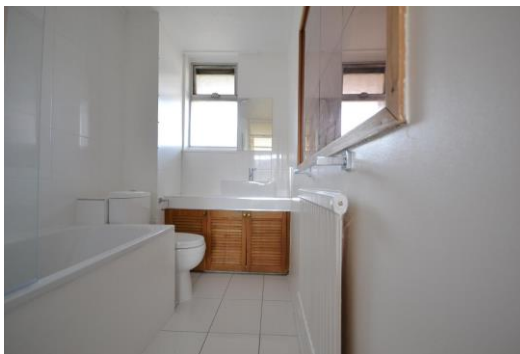
# Marden Square

London, SE16

£2,600 per month  
(£600 per week)

A bright three bedroom maisonette within easy reach of Bermondsey Station. The apartment benefits from having a large reception with balcony, eat-in kitchen, three double bedrooms and a modern bathroom and cloakroom. EPC Rating D

**CHESTERTONS**



# Marden Square

London, SE16

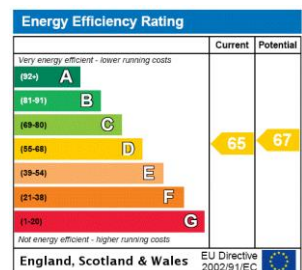
- Newly Refurbished Apartment
- 3 Bedroom Maisonette
- Balcony, Eat-in Kitchen
- Available Now. EPC Rating D



A bright three bedroom maisonette within easy reach of Bermondsey Station. The apartment benefits from having a large reception with balcony, eat-in kitchen, three double bedrooms and a modern bathroom and cloakroom. EPC Rating D

Bermondsey is situated on the south bank of the River Thames and is one of the capital's most up and coming areas. Bermondsey is on the Jubilee line making Canary Wharf and West London easily accessible. The area has a weekly antiques market on a Friday and is a short walk to Shad Thames, London Bridge & Bermondsey Street which are home to an array of bars and restaurants.

**Minimum Term:** months  
**Deposit Required:** £0.00  
**Local Authority:** London Borough of Southwark  
**Council Tax Band:** B  
**EPC Rating:** C  
**Furnished, Part Furnished, Unfurnished**



### Chestertons Tower Bridge Lettings

220 Tower Bridge Road  
 Tower Bridge  
 London  
 SE1 2UP  
 towerbridge@chestertons.co.uk  
 02073576911  
 chestertons.co.uk

Additional tenant charges apply (fees apply to non-AST tenancies only)  
 Tenancy Agreement Fee: £300  
 References per Tenant/Guarantor: £60  
 Inventory check (approx. £100 – £250 inc. VAT)  
[chestertons.co.uk/property-to-rent/applicable-fees](http://chestertons.co.uk/property-to-rent/applicable-fees)

Chesterton Global Ltd trading as Chestertons for themselves and for the vendor of this property whose agents they are, give notice that (i) these particulars do not constitute any part of an offer or contract, (ii) all statements contained within these particulars are made without responsibility on the part of Chestertons or the vendor, (iii) whilst made in good faith, none of the statements contained within these particulars are to be relied upon as a statement or representation of fact, (iv) any intending purchasers must satisfy themselves by inspection or otherwise as to the correctness of each of the statements contained within these particulars, (v) the vendor does not make or give either Chestertons or any person in their employment any authority to make or give representation or warranty whatsoever in relation to this property. Wide angle lenses may be used. ©Copyright Chestertons | Chesterton Global Ltd | Registered Office 40 Connaught Street, Hyde Park, London W2 2AB Registered Company Number 05334580.



This paper is  
100% recyclable