



Raleigh Court

Clarence Mews, SE16

£1,750 per month
(£403.85 per week)

A two bedroom river facing apartment on the 3rd floor of this modern development. The property is available furnished and boasts two double bedrooms, two bathrooms and allocated parking.



Raleigh Court

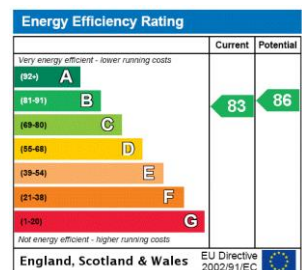
Clarence Mews, SE16

- Modern gated development
- 2 double bedrooms
- 2 bathrooms
- River views
- Close to Rotherhithe station



A two bedroom river facing apartment on the 3rd floor of this modern development. The property is available furnished and boasts two double bedrooms, two bathrooms and allocated parking. EPC Rating B.

Minimum Term: months
Deposit Required: £2,019.23
Local Authority: London Borough of Southwark
Council Tax Band: E
EPC Rating: B
Furnished



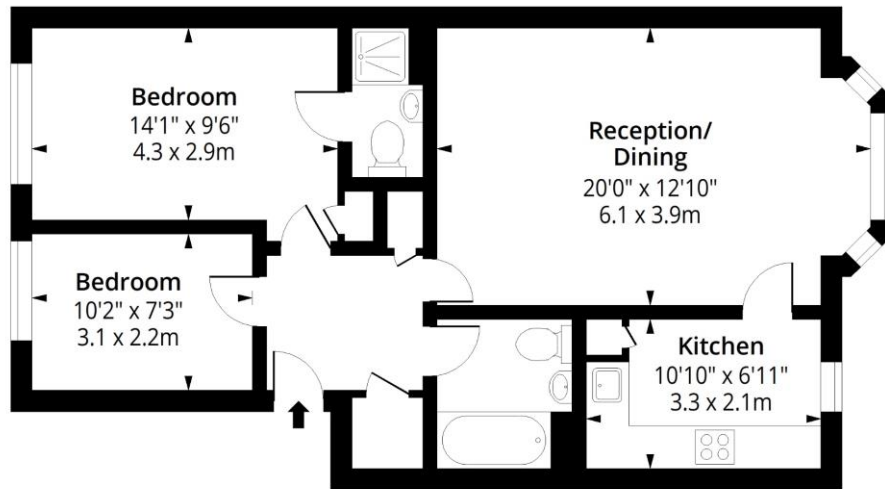
Chestertons Tower Bridge Lettings

220 Tower Bridge Road
 Tower Bridge
 London
 SE1 2UP
 towerbridge@chestertons.co.uk
 02073576911
 chestertons.co.uk

Additional tenant charges apply (fees apply to non-AST tenancies only)
 Tenancy Agreement Fee: £300
 References per Tenant/Guarantor: £60
 Inventory check (approx. £100 – £250 inc. VAT)
 chestertons.co.uk/property-to-rent/applicable-fees

Raleigh Court, SE16

Approx. Gross Internal Area 705 Sq Ft - 65.49 Sq M



Third Floor

Floor Area 705 Sq Ft - 65.49 Sq M



Measured according to RICS IPMS2. Floor plan is for illustrative purposes only and is not to scale. Every attempt has been made to ensure the accuracy of the floor plan shown, however all measurements, fixtures, fittings and data shown are an approximate interpretation for illustrative purposes only. 1 sq m = 10.76 sq feet.

lpaplus.com

Date: 6/5/2024

