



Trocette Mansions

249 Bermondsey Street, SE1

£2,250 per month
(£519.23 per week)

A beautifully presented 2-bedroom apartment in this popular Bermondsey Street development. The property is available furnished and boasts a large reception room, refurbished kitchen and bathroom and 2 double bedrooms.



Trocette Mansions

249 Bermondsey Street, SE1

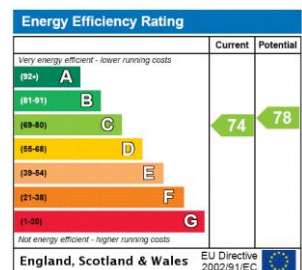
- Two double bedrooms
- Refurbished kitchen & bathroom
- Large reception room
- Available furnished
- Bermondsey Street location



A beautifully presented 2-bedroom apartment in this popular Bermondsey Street development. The property is available furnished and boasts a large reception room, refurbished kitchen and bathroom and two double bedrooms.

Bermondsey is situated on the south bank of the River Thames and is one of the capital's most up and coming areas. The area is on the Jubilee line making Canary Wharf and West London easily accessible. The area has a weekly antiques market on a Friday and is a short walk to Shad Thames & Bermondsey Street, which are home to an array of bars and restaurants.

Minimum Term: months
Deposit Required: £2,596.15
Local Authority: London Borough of Southwark
Council Tax Band: E
EPC Rating: C
Furnished

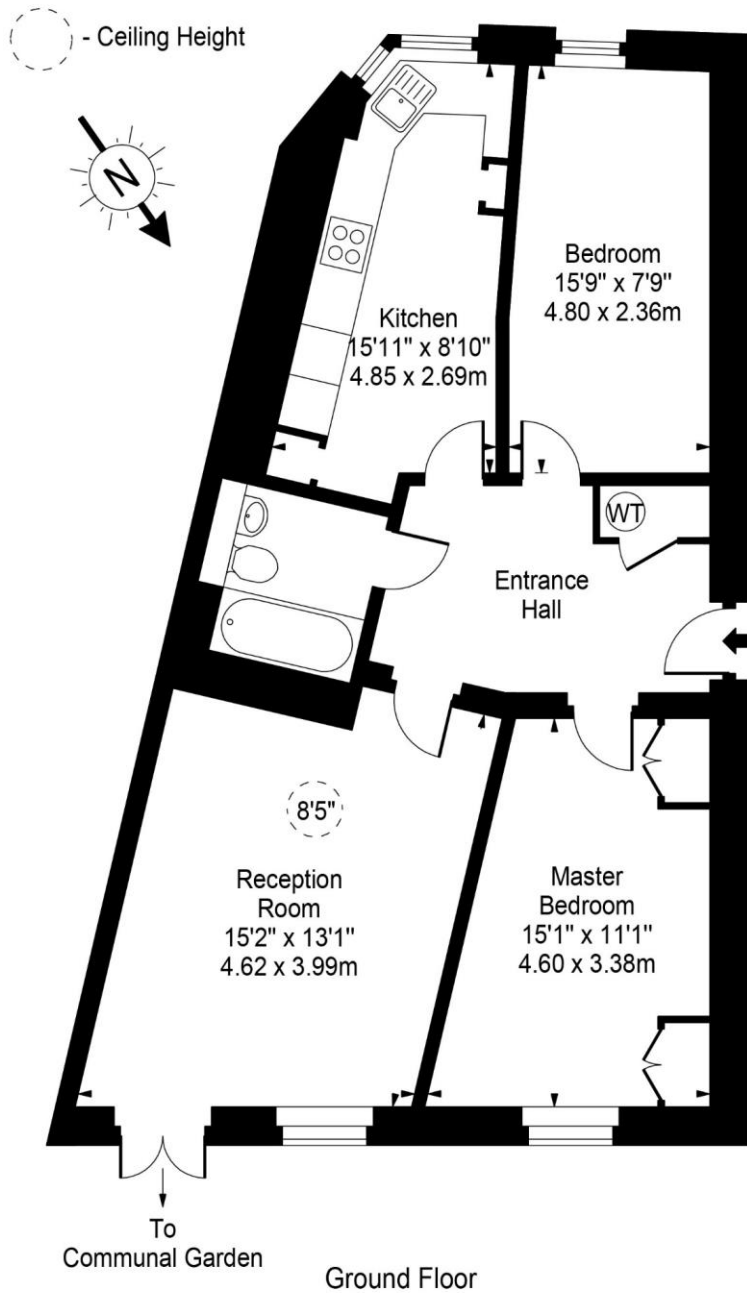


Chestertons Tower Bridge Lettings

220 Tower Bridge Road
 Tower Bridge
 London
 SE1 2UP
 towerbridge@chestertons.co.uk
 02073576911
 chestertons.co.uk

Additional tenant charges apply (fees apply to non-AST tenancies only)
 Tenancy Agreement Fee: £300
 References per Tenant/Guarantor: £60
 Inventory check (approx. £100 – £250 inc. VAT)
 chestertons.co.uk/property-to-rent/applicable-fees

Trocette Mansions, Bermondsey Street, SE1



Approx Gross Internal Area **770 Sq Ft - 71.53 Sq M**

For Illustration Purposes Only - Not To Scale

www.goldlens.co.uk

Ref. No. 011582K

