



William Square

London, SE16

£2,500 per month
(£576.92 per week)

A two bedroom apartment set in a secure dockside development located on the back-drop of the River Thames in Rotherhithe. The apartment boasts, two bedrooms, two bathrooms, separate kitchen, spacious reception and comes with parking space.



William Square

London, SE16

- FURNISHED
- TWO BEDROOM
- TWO BATHROOM
- MODERN KITCHEN
- PARKING



A two bedroom apartment set in a secure dockside development located on the back-drop of the River Thames in Rotherhithe. The apartment boasts, two bedrooms, two bathrooms, separate kitchen, spacious reception and comes with parking space.

Minimum Term: 12 months
Deposit Required: £2,884.62
Local Authority: London Borough of Southwark
Council Tax Band: D
EPC Rating: To be confirmed

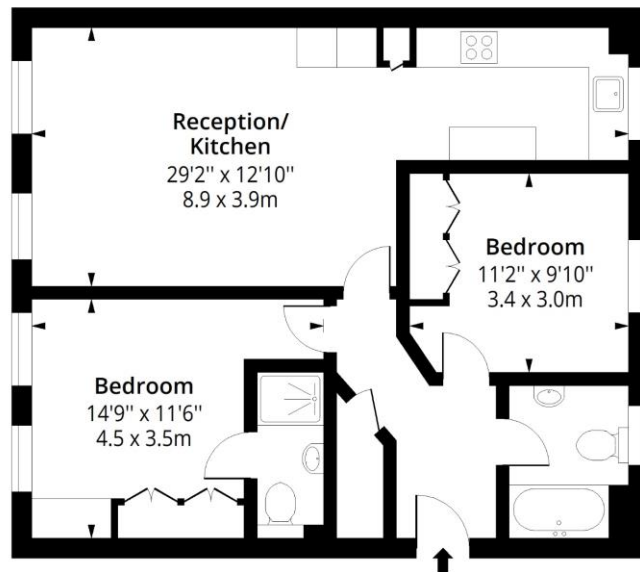
Chestertons Tower Bridge Lettings

220 Tower Bridge Road
Tower Bridge
London
SE1 2UP
towerbridge@chestertons.co.uk
02073576911
chestertons.co.uk

Additional tenant charges apply (fees apply to non-AST tenancies only)
Tenancy Agreement Fee: £300
References per Tenant/Guarantor: £60
Inventory check (approx. £100 – £250 inc. VAT)
chestertons.co.uk/property-to-rent/applicable-fees

William Square, SE16

Approx. Gross Internal Area 746 Sq Ft - 69.30 Sq M



Third Floor

Floor Area 746 Sq Ft - 69.30 Sq M



Measured according to RICS IPMS2. Floor plan is for illustrative purposes only and is not to scale. Every attempt has been made to ensure the accuracy of the floor plan shown, however all measurements, fixtures, fittings and data shown are an approximate interpretation for illustrative purposes only. 1 sq m = 10.76 sq feet.

lpaplus.com

Date: 1/7/2024



This paper is 100% recyclable