



North Block

1c Belvedere Road, SE1

£4,000 per month
(£923.08 per week)

A two double bedroom apartment situated in the popular County Hall development in Waterloo. The property is fully furnished and further benefits from residents gym, pool and 24 hour concierge.



North Block

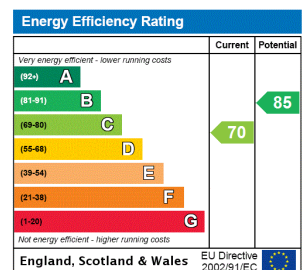
1c Belvedere Road, SE1

- GREAT LOCATION
- TWO BEDROOMS
- TWO BATHROOMS
- FURNISHED



A two double bedroom apartment situated in the popular County Hall development in Waterloo. The property is fully furnished and further benefits from residents gym, pool and 24 hour concierge.

Minimum Term: 12 months
Deposit Required: £4,615.38
Local Authority: London Borough Of Lambeth
Council Tax Band: G
EPC Rating: C



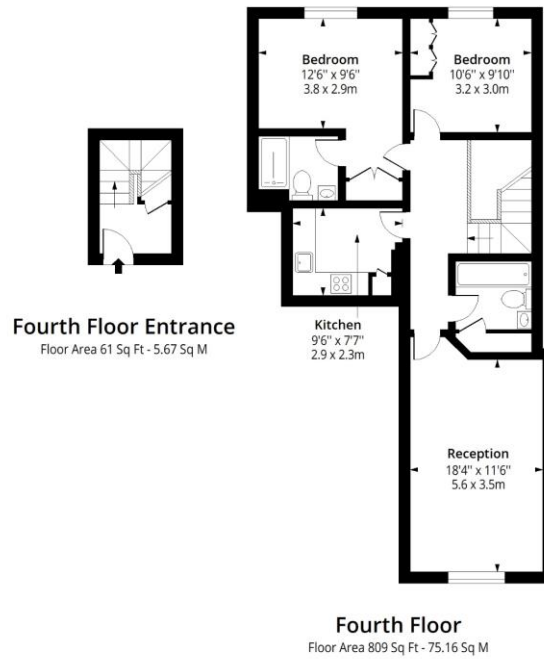
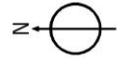
Chestertons Tower Bridge Lettings

220 Tower Bridge Road
 Tower Bridge
 London
 SE1 2UP
 towerbridge@chestertons.co.uk
 02073576911
 chestertons.co.uk

Additional tenant charges apply (fees apply to non-AST tenancies only)
 Tenancy Agreement Fee: £300
 References per Tenant/Guarantor: £60
 Inventory check (approx. £100 – £250 inc. VAT)
 chestertons.co.uk/property-to-rent/applicable-fees

North Block, Belvedere Road, SE1

Approx. Gross Internal Area 870 Sq Ft - 80.82 Sq M



Measured according to RICS IPMS2. Floor plan is for illustrative purposes only and is not to scale. Every attempt has been made to ensure the accuracy of the floor plan shown, however all measurements, fixtures, fittings and data shown are an approximate interpretation for illustrative purposes only. 1 sq m = 10.76 sq feet.

lpaplus.com

Date: 1/7/2024



This paper is 100% recyclable