



# Felix Manor

Old Perry Street, BR7

£7,000 per month  
(£1,615.38 per week)

A stunning five-bedroom detached family home set within a gated development in Chislehurst. Arranged over three floors the property offers spacious accommodation throughout, boasting a gorgeous reception room, 3 bathrooms and a lovely rear garden



# Felix Manor

## Old Perry Street, BR7

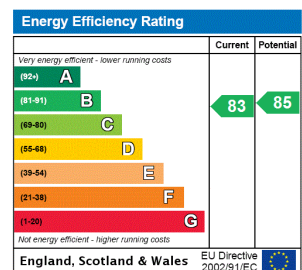
- 5 bedroom house
- Cinema Room and gym/sauna room
- Modern kitchen with further dining space
- Large reception with separate dining space
- Short walk to Chislehurst Royal Parade and Farrington School
- Large driveway with ample off-street parking



A stunning five-bedroom detached family home set within a gated development in Chislehurst. Arranged over three floors the property offers spacious accommodation throughout, boasting a gorgeous reception room which benefits from a conservatory opening onto the rear garden, modern kitchen/diner, utility room, study, WC and a custom built 25ft sound proof 3D cinema room, 3 bathrooms, 5 bedrooms and integral garage.

Felix Manor is located within close proximity to Chislehurst's Royal Parade, Scadbury Park and the ever-popular Farrington School.

**Minimum Term:** 12 months  
**Deposit Required:** £9,692.31  
**Local Authority:** Bromley  
**Council Tax Band:** H  
**EPC Rating:** B  
**Furnished**



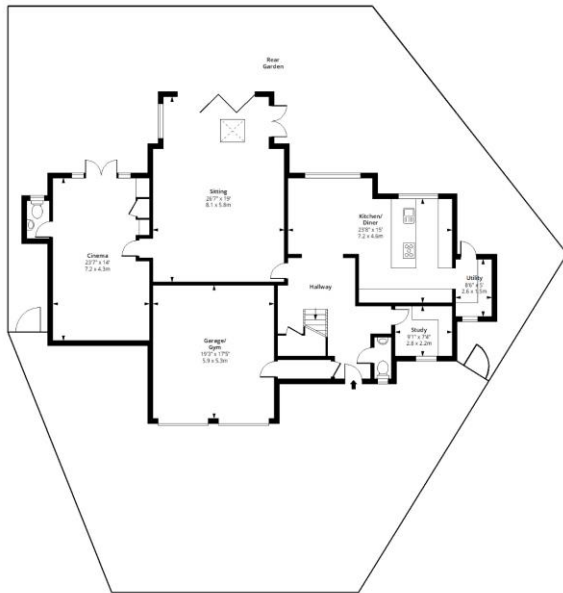
### Chestertons Tower Bridge Lettings

220 Tower Bridge Road  
 Tower Bridge  
 London  
 SE1 2UP  
 towerbridge@chestertons.co.uk  
 02073576911  
 chestertons.co.uk

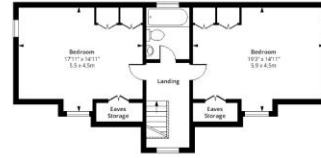
Additional tenant charges apply (fees apply to non-AST tenancies only)  
 Tenancy Agreement Fee: £300  
 References per Tenant/Guarantor: £60  
 Inventory check (approx. £100 – £250 inc. VAT)  
[chestertons.co.uk/property-to-rent/applicable-fees](http://chestertons.co.uk/property-to-rent/applicable-fees)

# Felix Manor, BR7

Approx. Gross Internal Area 3513 Sq Ft - 326.36 Sq M



**Ground Floor**  
Floor Area 1867 Sq Ft - 173.44 Sq M



**Second Floor**  
Floor Area 676 Sq Ft - 62.80 Sq M



**First Floor**  
Floor Area 970 Sq Ft - 90.11 Sq M



Measured according to RICS IPMS2. Floor plan is for illustrative purposes only and is not to scale. Every attempt has been made to ensure the accuracy of the floor plan shown, however all measurements, fixtures, fittings and data shown are an approximate interpretation for illustrative purposes only. 1 sq m = 10.76 sq feet.

lpaplus.com

Date: 28/6/2024



This paper is 100% recyclable