

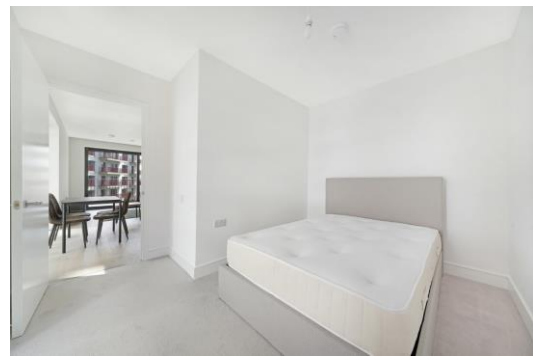


Belfield Mansions

35 Heygate Street, SE17

£3,150 per month
(£726.92 per week)

Brand new two bedroom apartment located in Park & Sayer, Elephant Park. The property comprises two double bedrooms, two bathrooms, balcony, open plan living space.



Belfield Mansions

35 Heygate Street, SE17

- TWO BEDROOMS
- TWO BATHROOMS
- BALCONY
- RESIDENT'S GYM
- 24-HOUR CONCIERGE



Brand new two bedroom apartment located in Park & Sayer, Elephant Park. The property comprises two double bedrooms, two bathrooms, balcony, open plan living space.

Minimum Term: 12 months
Deposit Required: £3,634.62
Local Authority: London Borough of Southwark
Council Tax Band: E
EPC Rating: B
Furnished

Energy Efficiency Rating		Current	Potential
Very energy efficient - lower running costs			
(92-100)	A		
(81-91)	B	86	86
(69-80)	C		
(55-68)	D		
(39-54)	E		
(21-38)	F		
(1-20)	G		
Not energy efficient - higher running costs			
England, Scotland & Wales		EU Directive 2002/91/EC	

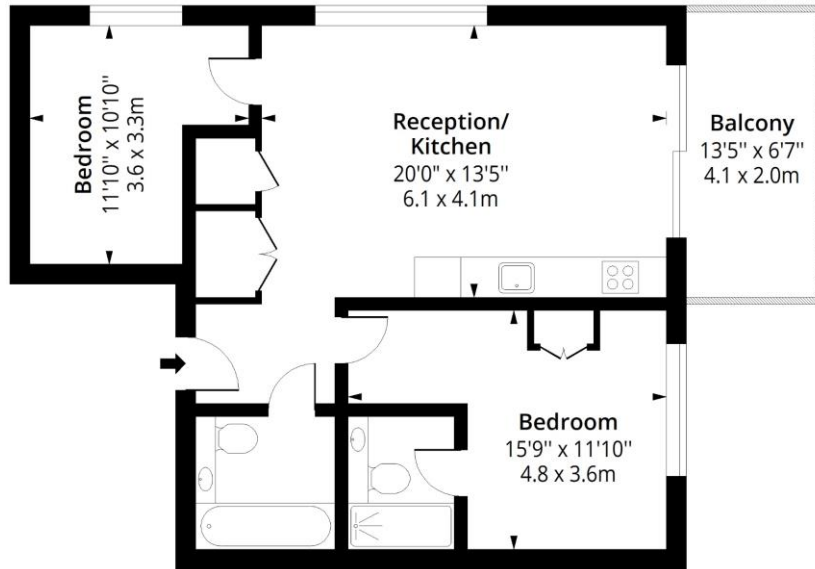
Chestertons Tower Bridge Lettings

220 Tower Bridge Road
 Tower Bridge
 London
 SE1 2UP
 towerbridge@chestertons.co.uk
 02073576911
 chestertons.co.uk

Additional tenant charges apply (fees apply to non-AST tenancies only)
 Tenancy Agreement Fee: £300
 References per Tenant/Guarantor: £60
 Inventory check (approx. £100 – £250 inc. VAT)
 chestertons.co.uk/property-to-rent/applicable-fees

Belfield Mansions, SE17

Approx. Gross Internal Area 701 Sq Ft - 65.12 Sq M
Approx. Gross Balcony Area 93 Sq Ft - 8.64 Sq M



Fifth Floor

Floor Area 701 Sq Ft - 65.12 Sq M



Measured according to RICS IPMS2. Floor plan is for illustrative purposes only and is not to scale. Every attempt has been made to ensure the accuracy of the floor plan shown, however all measurements, fixtures, fittings and data shown are an approximate interpretation for illustrative purposes only. 1 sq m = 10.76 sq feet.

lpaplus.com

Date: 17/6/2024



This paper is
100% recyclable