



Merino Gardens

London, E1W

£4,100 per month
(£946.15 per week)

This fabulously designed apartment in London Dock offers open plan kitchen/living/dining with direct access to the private balcony, two double bedrooms and two bathrooms.



Merino Gardens

London, E1W

- Two double bedrooms
- Two bathrooms
- Balcony
- 24 hour concierge
- Residents gym & swimming pool
- Furnished



This fabulously designed apartment in London Dock offers open plan kitchen/living/dining with direct access to the private balcony, two double bedrooms and two bathrooms.

Minimum Term: 12 months
Deposit Required: £4,730.77
Local Authority: Tower Hamlets
Council Tax Band: F
EPC Rating: B

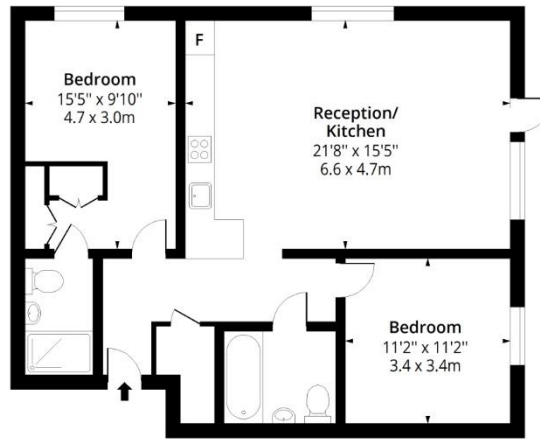
Chestertons Tower Bridge Lettings

220 Tower Bridge Road
Tower Bridge
London
SE1 2UP
towerbridge@chestertons.co.uk
02073576911
chestertons.co.uk

Additional tenant charges apply (fees apply to non-AST tenancies only)
Tenancy Agreement Fee: £300
References per Tenant/Guarantor: £60
Inventory check (approx. £100 – £250 inc. VAT)
[chestertons.co.uk/property-to-rent/applicable-fees](https://www.chestertons.co.uk/property-to-rent/applicable-fees)

Merino Gardens, E1W

Approx. Gross Internal Area 859 Sq Ft - 79.80 Sq M



Fifth Floor

Floor Area 859 Sq Ft - 79.80 Sq M



Measured according to RICS IPMS2. Floor plan is for illustrative purposes only and is not to scale. Every attempt has been made to ensure the accuracy of the floor plan shown, however all measurements, fixtures, fittings and data shown are an approximate interpretation for illustrative purposes only. 1 sq m = 10.76 sq feet.

lpaplus.com

Date: 21/6/2024

Chesterton Global Ltd trading as Chestertons for themselves and for the vendor of this property whose agents they are, give notice that (i) these particulars do not constitute any part of an offer or contract, (ii) all statements contained within these particulars are made without responsibility on the part of Chestertons or the vendor, (iii) whilst made in good faith, none of the statements contained within these particulars are to be relied upon as a statement or representation of fact, (iv) any intending purchasers must satisfy themselves by inspection or otherwise as to the correctness of each of the statements contained within these particulars, (v) the vendor does not make or give either Chestertons or any person in their employment any authority to make or give representation or warranty whatsoever in relation to this property. Wide angle lenses may be used. ©Copyright Chestertons | Chesterton Global Ltd | Registered Office 40 Connaught Street, Hyde Park, London W2 2AB Registered Company Number 05334580.



This paper is 100% recyclable