



Rothsay Street

London, SE1

£5,500 per month
(£1,269.23 per week)

A well presented five bedroom house arranged over 3 floors. The house benefits from 5 double bedrooms, 2 bathrooms, cloakroom, open plan kitchen and reception area, private garden and off street parking.



Rothsay Street

London, SE1

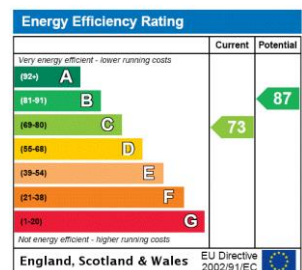
- 5 Bedroom House
- Arranged Over 3 Floors
- 2 Bathrooms
- Private Garden
- Off Street Parking



A well presented 5 bedroom house arranged over 3 floors. The house benefits from 5 double bedrooms, 2 bathrooms, cloakroom, open plan kitchen and reception area, private garden and off street parking.

The area is home to London's most iconic landmark, Tower Bridge and is within the vicinity of many attractions such as The Shard, Tate Modern and Tower of London. The area boasts a variety of bars and restaurants and is a short walk to the delights of Bermondsey Street, Maltby Street & Borough markets. Although The City is within walking distance the area is well connected with excellent transport links via London Bridge & Tower Hill stations as-well as the river taxi.

Minimum Term: 6 months
Deposit Required: £6,346.15
Local Authority: London Borough of Southwark
Council Tax Band: D
EPC Rating: C
Furnished

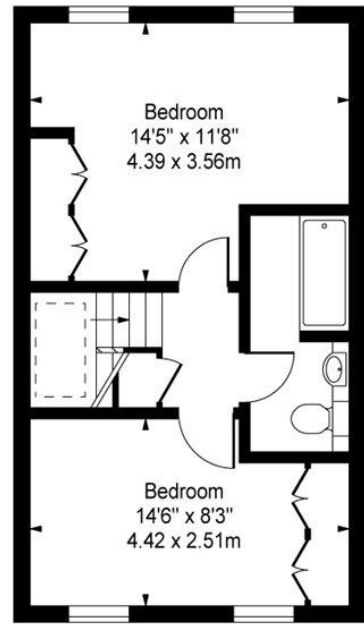
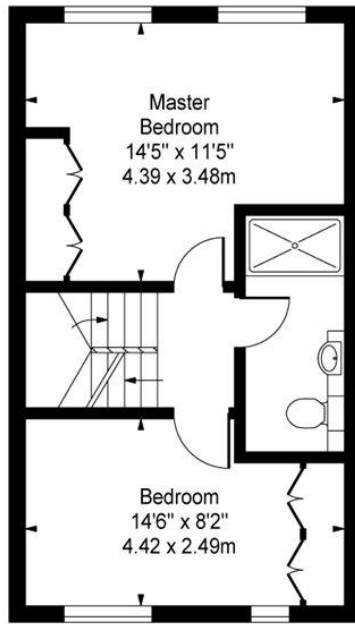
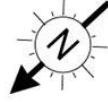
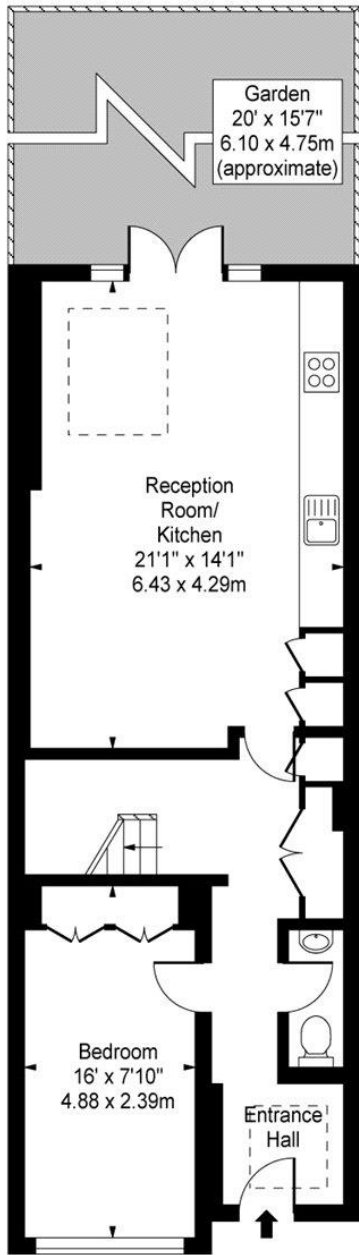


Chestertons Tower Bridge Lettings

220 Tower Bridge Road
 Tower Bridge
 London
 SE1 2UP
 towerbridge@chestertons.co.uk
 02073576911
 chestertons.co.uk

Additional tenant charges apply (fees apply to non-AST tenancies only)
 Tenancy Agreement Fee: £300
 References per Tenant/Guarantor: £60
 Inventory check (approx. £100 – £250 inc. VAT)
chestertons.co.uk/property-to-rent/applicable-fees

Rothsay Street, SE1



Ground Floor

First Floor

Second Floor

Approx Gross Internal Area **1380 Sq Ft - 128.20 Sq M**

For Illustration Purposes Only - Not To Scale
www.goldlens.co.uk
Ref. No. 008519K

