



Queen Elizabeth Street

London, SE1

£4,896.67 per month
(£1,130.00 per week)

Rare to the market, this is a well presented modernised three double bedroom end of terraced house. Set over 3 floors the property comes with an allocated parking space and private rear garden. Ideally located for the City & London Bridge.



Queen Elizabeth Street

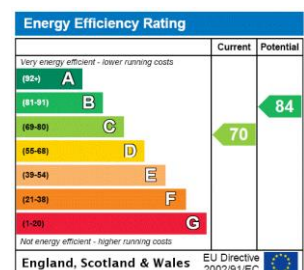
London, SE1

- HOUSE
- THREE BEDROOM
- GARDEN
- FURNISHED
- NEWLY DECORATED



Rare to the market, this is a well presented modernised three double bedroom end of terraced house. Set over 3 floors the property comes with an allocated parking space and private rear garden. Ideally located for the City & London Bridge.

Minimum Term: 12 months
Deposit Required: £5,650.00
Local Authority: London Borough Of Southwark (Council Tax)
Council Tax Band: F
EPC Rating: C
Furnished



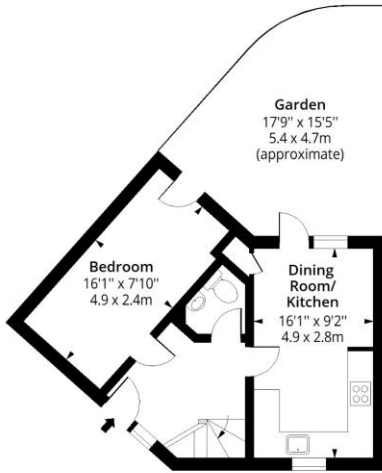
Chestertons Tower Bridge Lettings

220 Tower Bridge Road
 Tower Bridge
 London
 SE1 2UP
 lettings.towerbridge@chestertons.com
 02073576911
 chestertons.com

Additional tenant charges apply (fees apply to non-AST tenancies only)
 Tenancy Agreement Fee: £300
 References per Tenant/Guarantor: £60
 Inventory check (approx. £100 – £250 inc. VAT)
 chestertons.com/property-to-rent/applicable-fees

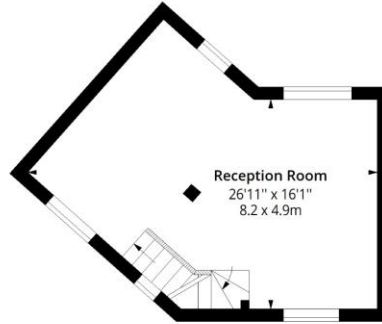
Queen Elizabeth Street, SE1

Approx. Gross Internal Area 1185 Sq Ft - 110.10 Sq M



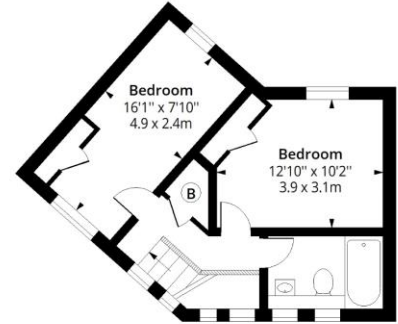
Ground Floor

Floor Area 395 Sq Ft - 36.70 Sq M



First Floor

Floor Area 395 Sq Ft - 36.70 Sq M



Second Floor

Floor Area 395 Sq Ft - 36.70 Sq M



Measured according to RICS IPMS2. Floor plan is for illustrative purposes only and is not to scale. Every attempt has been made to ensure the accuracy of the floor plan shown, however all measurements, fixtures, fittings and data shown are an approximate interpretation for illustrative purposes only. 1 sq m = 10.76 sq feet.

lpaplus.com

Date: 21/2/2023



This paper is 100% recyclable