



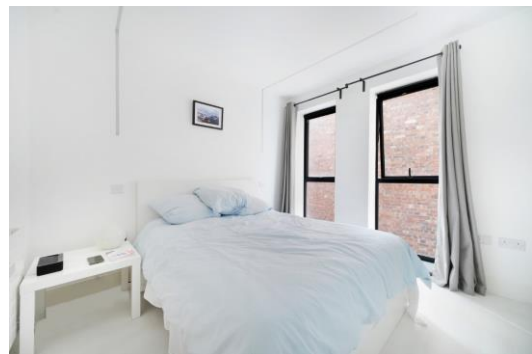
# Risborough Street

London, SE1

£3,899 per month  
(£899.77 per week)

A spacious split-level top floor penthouse apartment with large roof terrace with fantastic views of London skyline. The property comprises two double bedrooms, two bathrooms, additional WC and two balconies.

**CHESTERTONS**



# Risborough Street

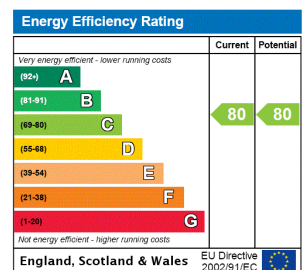
London, SE1

- PENTHOUSE
- TWO BEDROOMS
- TWO BATHROOMS
- ROOF TERRACE
- TWO BALCONIES



A spacious split-level top floor penthouse apartment with large roof terrace with fantastic views of London skyline. The property comprises two double bedrooms, two bathrooms, additional WC and two balconies.

**Minimum Term:** 12 months  
**Deposit Required:** £4,498.85  
**Local Authority:** London Borough of Southwark  
**Council Tax Band:** D  
**EPC Rating:** C  
**Furnished**



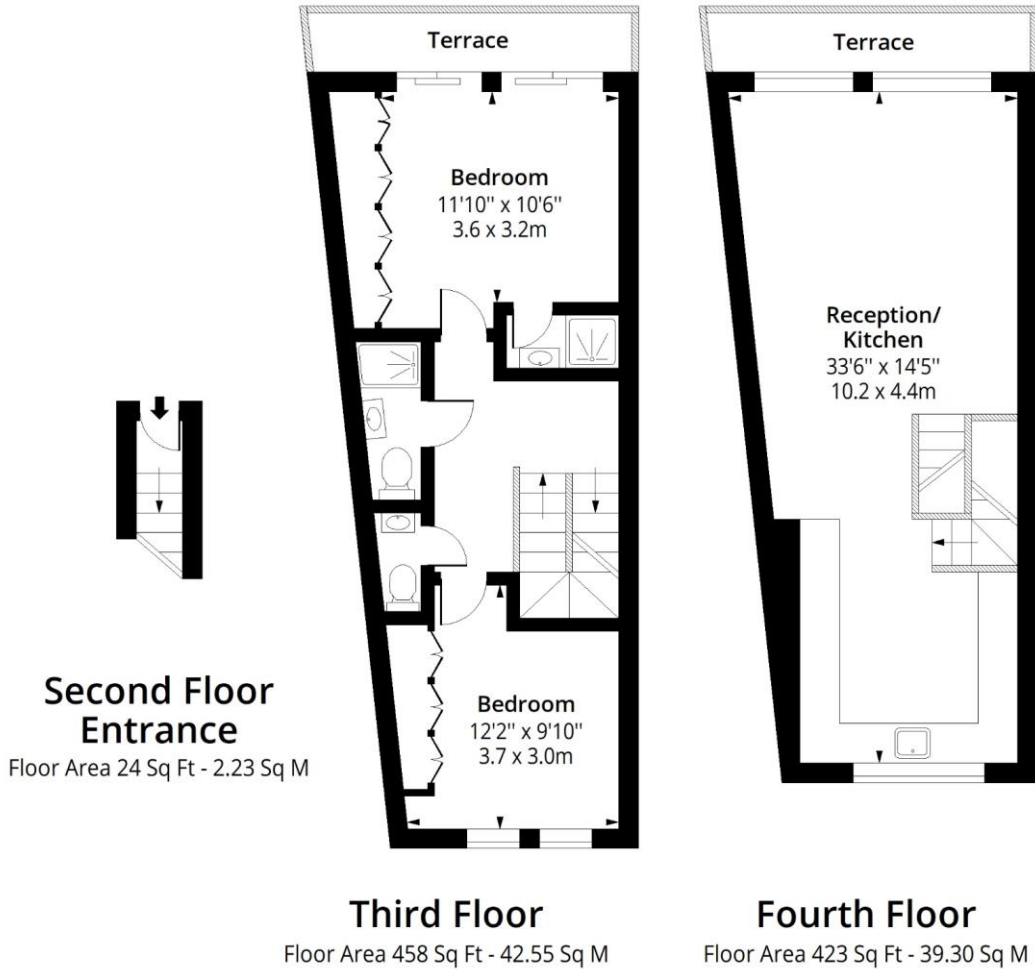
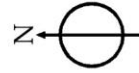
### Chestertons Tower Bridge Lettings

220 Tower Bridge Road  
 Tower Bridge  
 London  
 SE1 2UP  
 towerbridge@chestertons.co.uk  
 02073576911  
 chestertons.co.uk

Additional tenant charges apply (fees apply to non-AST tenancies only)  
 Tenancy Agreement Fee: £300  
 References per Tenant/Guarantor: £60  
 Inventory check (approx. £100 – £250 inc. VAT)  
 chestertons.co.uk/property-to-rent/applicable-fees

# Risborough Street, SE1

Approx. Gross Internal Area 905 Sq Ft - 84.08 Sq M  
Approx. Gross Terrace Area 95 Sq Ft - 8.83 Sq M



Measured according to RICS IPMS2. Floor plan is for illustrative purposes only and is not to scale. Every attempt has been made to ensure the accuracy of the floor plan shown, however all measurements, fixtures, fittings and data shown are an approximate interpretation for illustrative purposes only. 1 sq m = 10.76 sq feet.

lpaplus.com

Date: 22/5/2024



This paper is  
100% recyclable