



Ivory House

East Smithfield, E1W

£575 per week
(£2,491.67 pcm)

An exceptional one bedroom apartment set within this prestigious warehouse conversion development with 24 hours porter. The apartment boasts original period features and balcony with dock views.



Ivory House

East Smithfield, E1W

- Warehouse conversion
- Stone floor, exposed brickwork and ironwork
- Barrel vaulted ceiling in the reception
- Balcony overlooking the docks
- Residents 24 hour concierge
- Parking Available by separate negotiation
- EPC rating C
- Available furnished



Ivory House is situated in St Katherine Docks which is a truly unique location in Central London offering picturesque and tranquil surroundings moments from the iconic Tower of London Tower Bridge. Tower Hill underground station , Tower Gateway DLR and Tower Pier offer excellent transport links all over London. Also in close proximity there is wide array of restaurants and bars as well a large Waitrose.

Tenure: Long Let
Furnished

Additional tenant charges apply
 Tenancy Agreement Fee: £222
 References per Tenant/Guarantor: £60
 Inventory check (approx. £100 – £250 inc. VAT)
chestertons.com/property-to-rent/applicable-fees

Energy Efficiency Rating		Current	Potential
Very energy efficient - lower running costs			
(92-100) A			
(81-91) B			
(69-80) C		77	79
(55-68) D			
(39-54) E			
(21-38) F			
(1-20) G			
Not energy efficient - higher running costs			
England, Scotland & Wales		EU Directive 2002/91/EC	

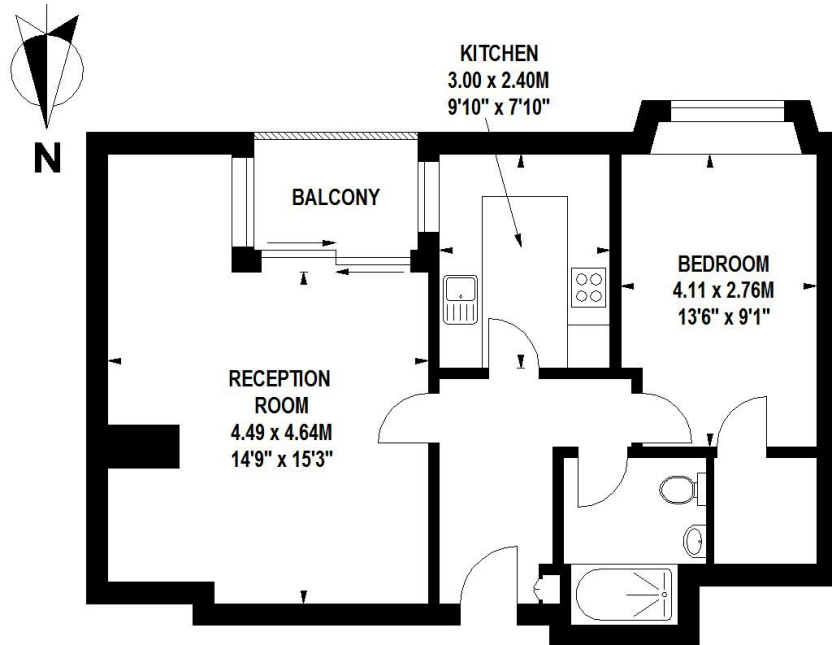
Chestertons Tower Bridge Lettings

220 Tower Bridge Road
 Tower Bridge
 London
 SE1 2UP
lettings.towerbridge@chestertons.com
 02073576911
chestertons.com



Ivory House, E1

Approximate Gross Internal Area 56 sq m / 607 sq ft



Second Floor

Floor Plan produced for Chestertons by Mays Floorplans © . Tel 020 3397 4594
Illustration for identification purposes only, not to scale
All measurements are maximum, and include wardrobes and window bays where applicable