



Welland Mews

London, E1W

£3,000 per month
(£692.31 per week)

ONLY 2 SHARERS. An amazing 3 bedroom property arranged over three floors, comprises 3 double bedrooms, two modern bathroom, additional WC, new flooring, recently painted throughout and offers large, spacious living and private terrace.



Welland Mews

London, E1W

- THREE BEDROOM
- UNFURNISHED
- MODERN
- TERRACE

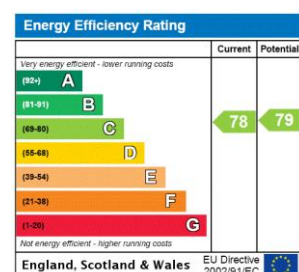


An amazing three bedroom property located on a quiet cul-de-sac in West Wapping, close to all the local amenities.

The property is arranged over three floors, comprises three double bedrooms, two modern bathrooms, additional WC, new flooring, recently painted throughout and offers large, spacious living and private terrace.

Welland Mews is located very close to the Waitrose in Wapping and the bars and restaurants of St Katharine Docks.

Minimum Term: 12 months
Deposit Required: £3,461.54
Local Authority: London Borough Of Tower Hamlets
Council Tax Band: E
EPC Rating: C
Unfurnished



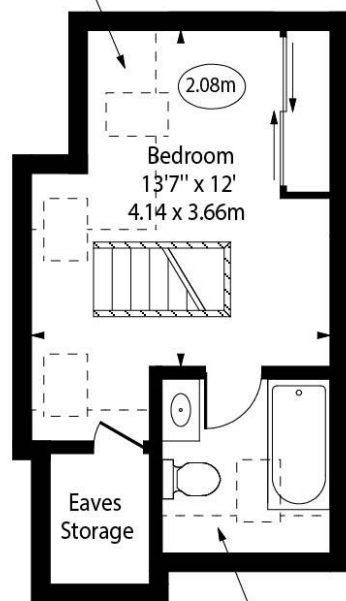
Chestertons Tower Bridge Lettings

220 Tower Bridge Road
 Tower Bridge
 London
 SE1 2UP
lettings.towerbridge@chestertons.co.uk
 02073576911
chestertons.co.uk

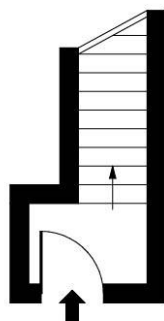
Additional tenant charges apply (fees apply to non-AST tenancies only)
 Tenancy Agreement Fee: £300
 References per Tenant/Guarantor: £60
 Inventory check (approx. £100 – £250 inc. VAT)
chestertons.co.uk/property-to-rent/applicable-fees

Restricted Height Area

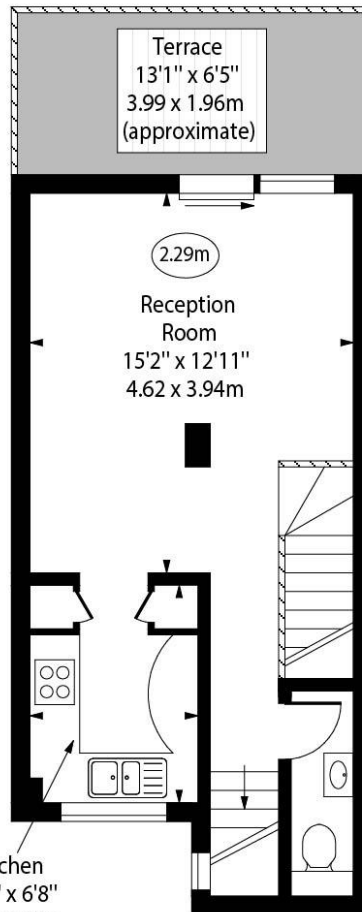
Welland Mews, E1W



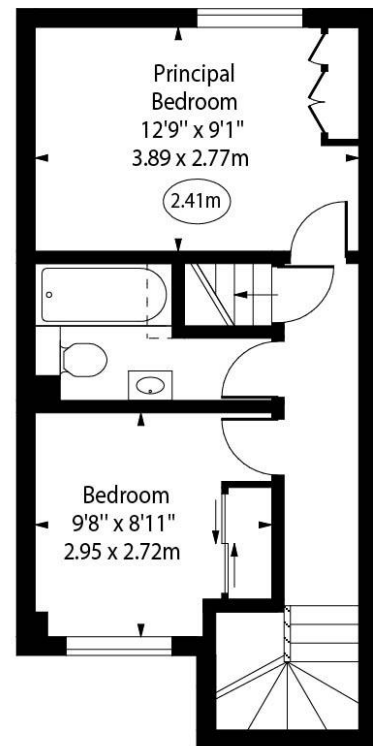
Third Floor



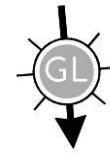
Upper Ground Floor



First Floor



Second Floor



○ - Ceiling Height

Approx Gross Internal Area

890 Sq Ft - 82.68 Sq M

Approx. Floor Area Including Restricted Heights

958 Sq Ft - 89.00 Sq M

(Including Eaves Storage)

For Illustration Purposes Only - Not To Scale

www.goldlens.co.uk

Ref. No. 020278J

