



Blackfriars Road

London, SE1

£3,400 per month
(£784.62 per week)

Great two bedroom apartment located on the second floor of a boutique development.

The property comprises two double bedroom, two bathroom and open plan kitchen and living space.



Blackfriars Road

London, SE1

- TWO BEDROOM
- TWO BATHROOM
- OPEN PLAN LIVING SPACE



Great two bedroom apartment located on the second floor of a boutique development.
The property comprises two double bedroom, two bathroom and open plan kitchen and living space.

Minimum Term: 12 months
Deposit Required: £3,923.08
Local Authority:
Council Tax Band:
EPC Rating: B
Furnished

Energy Efficiency Rating		
	Current	Potential
Very energy efficient - lower running costs		
A (91-100)		
B (81-90)	85	85
C (69-80)		
D (55-68)		
E (39-54)		
F (21-38)		
G (1-20)		
Not energy efficient - higher running costs		
England, Scotland & Wales EU Directive 2002/91/EC		

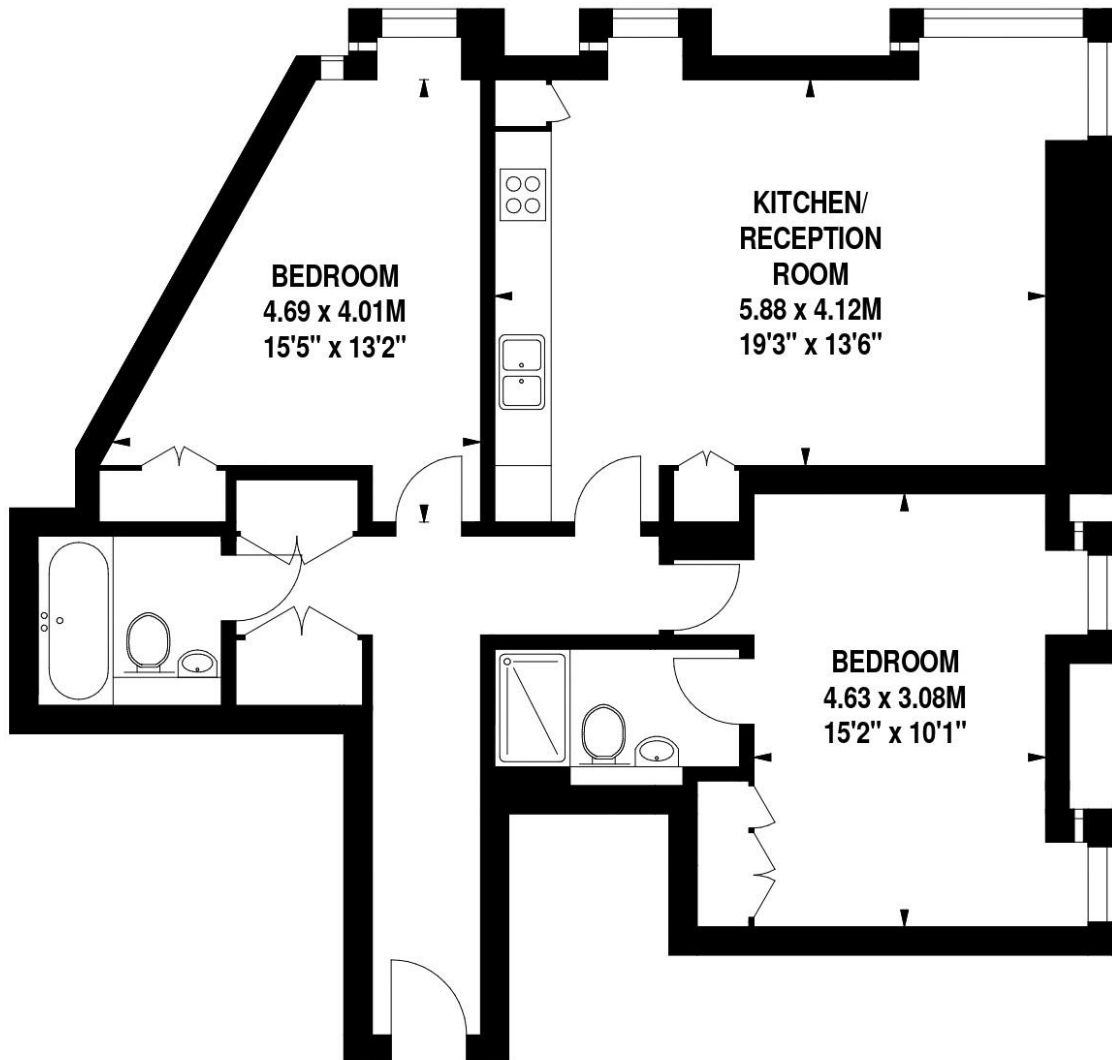
Chestertons Tower Bridge Lettings

220 Tower Bridge Road
Tower Bridge
London
SE1 2UP
towerbridge@chestertons.co.uk
02073576911
chestertons.co.uk

Additional tenant charges apply (fees apply to non-AST tenancies only)
Tenancy Agreement Fee: £300
References per Tenant/Guarantor: £60
Inventory check (approx. £100 – £250 inc. VAT)
chestertons.co.uk/property-to-rent/applicable-fees

Cubitt House , SE1

Approximate gross internal area
81 sq m / 872 sq ft



Second Floor

Floor Plan produced for Atlas Properties by Mays Floorplans © . Tel 020 3397 4594
Illustration for identification purposes only, not to scale
All measurements are maximum, and include wardrobes and window bays where applicable

