

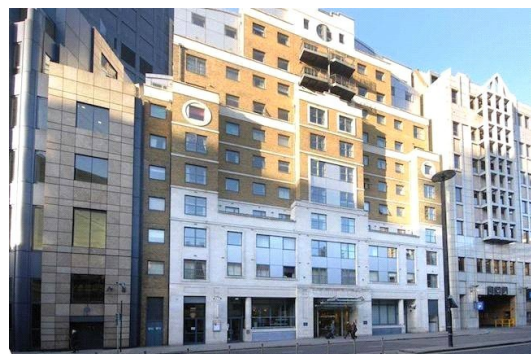


London House

172 Aldersgate Street, EC1A

£415 per week
(£1,798.33 pcm)

A modern two bedroom apartment situated on the 3rd floor of this portered development. The property is in an excellent location, moments from Barbican station with easy access to The City & Clerkenwell. The apartment benefits from having an open plan reception, two double bedrooms, two bathrooms (one en-suite) and private balcony.



London House

172 Aldersgate Street, EC1A

- Excellent Barbican location
- Two double bedrooms
- Two bathrooms
- Open plan reception room
- Concierge



The City of London is home to some of London's most popular attractions, including Tower Bridge, The Tower of London and St Paul's Cathedral. The area boasts world famous restaurants and is home to notable buildings such as the Gherkin & Heron Tower. Further attractions include Spitalfields & Leadenhall markets. Although The City is easy to walk around, it is excellently connected with a vast number of underground stations as-well as Liverpool Street, Cannon Street & Fenchurch Street mainline stations.

Tenure: To be advised
Furnished, Part Furnished

Additional tenant charges apply (fees apply to non-AST tenancies only)
 Tenancy Agreement Fee: £300
 References per Tenant/Guarantor: £60
 Inventory check (approx. £100 – £250 inc. VAT)
[chestertons.com/property-to-rent/applicable-fees](https://www.chestertons.com/property-to-rent/applicable-fees)

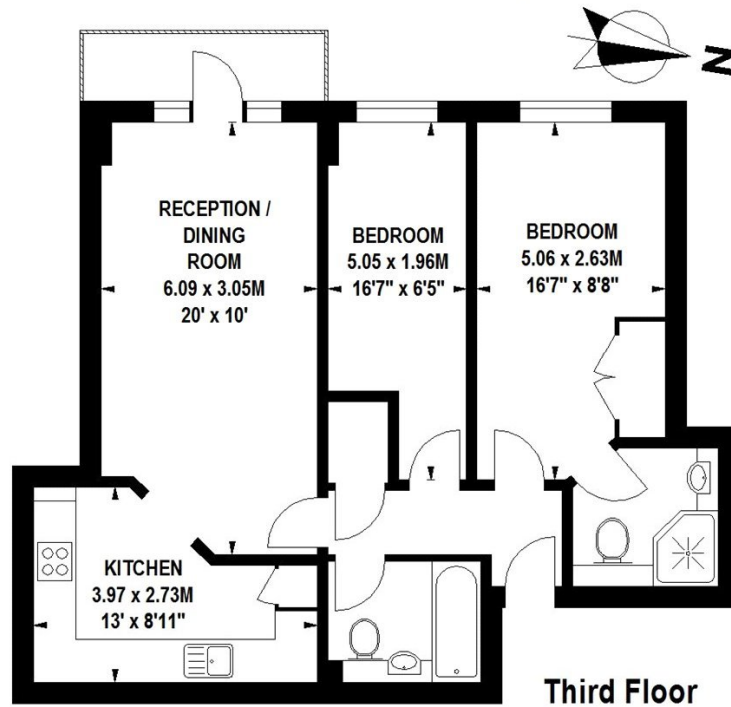
Energy Efficiency Rating		
	Current	Potential
Very energy efficient - lower running costs		
(92+) A		
(81-91) B		
(69-80) C		79
(55-68) D	62	
(39-54) E		
(21-38) F		
(1-20) G		
Not energy efficient - higher running costs		
England, Scotland & Wales		EU Directive 2002/91/EC

Chestertons Tower Bridge Lettings

220 Tower Bridge Road
 Tower Bridge
 London
 SE1 2UP
lettings.towerbridge@chestertons.com
 02073576911
[chestertons.com](https://www.chestertons.com)

London House, EC1

Approximate Gross Internal Area 63 sq m / 678 sq ft



Floor Plan produced for Chestertons by Mays Floorplans © . Tel 020 3397 4594

Illustration for identification purposes only, not to scale

All measurements are maximum, and include wardrobes and window bays where applicable