



Newman House

St. Georges Road, SE1

£3,250 per month
(£750 per week)

An immaculate, split level two-bedroom maisonette situated on Garden Row, a tree-lined street close to Elephant and Castle. The property comprises two large rooms, modern bathroom and well maintained garden.



Newman House

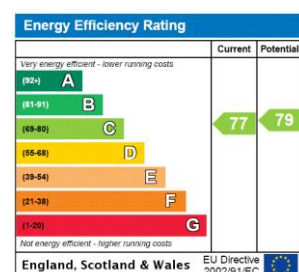
St. Georges Road, SE1

- MODERN MAISONETTE
- TWO BEDROOMS
- BATHROOM
- PRIVATE GARDEN
- FURNISHED



An immaculate, split level two-bedroom maisonette situated on Garden Row, a tree-lined street close to Elephant and Castle. The property is finished in a neutral palette and comprises two well-proportioned rooms, study area, modern bathroom, open plan modern living space with full-width folding doors opening onto a secluded courtyard garden.

Minimum Term: 6 months
Deposit Required: £3,750.00
Local Authority: London Borough of Southwark (Council Tax)
Council Tax Band: D
EPC Rating: C
Furnished



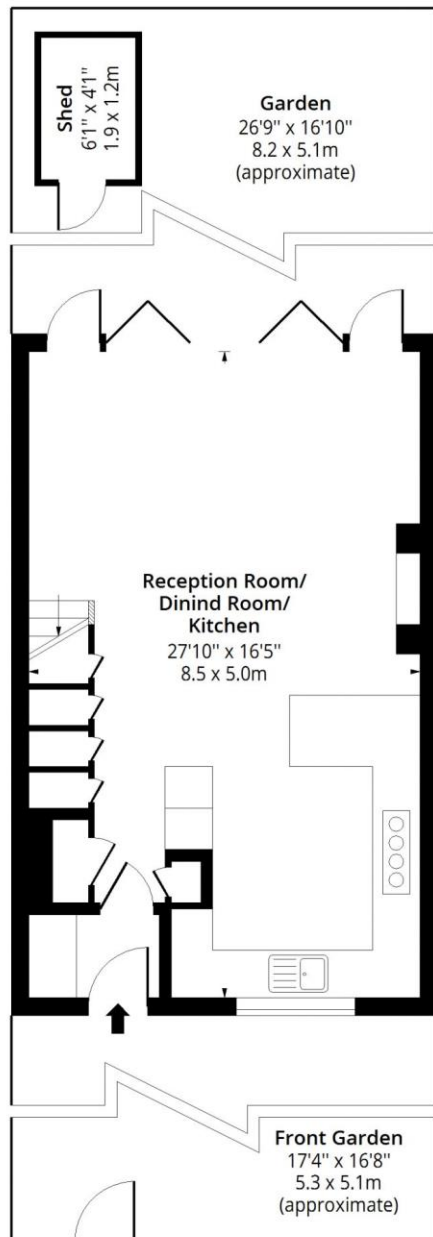
Chestertons Tower Bridge Lettings

220 Tower Bridge Road
 Tower Bridge
 London
 SE1 2UP
 towerbridge@chestertons.co.uk
 02073576911
 chestertons.co.uk

Additional tenant charges apply (fees apply to non-AST tenancies only)
 Tenancy Agreement Fee: £300
 References per Tenant/Guarantor: £60
 Inventory check (approx. £100 – £250 inc. VAT)
 chestertons.co.uk/property-to-rent/applicable-fees

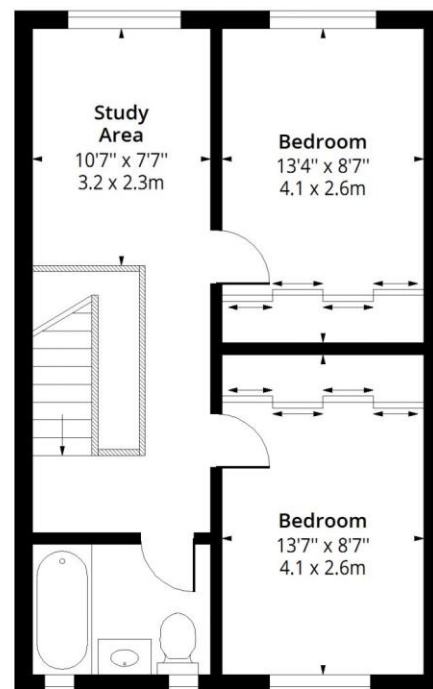
Newman House, SE1

Approx. Gross Internal Area 900 Sq Ft - 83.61 Sq M



Ground Floor

Floor Area 450 Sq Ft - 41.81 Sq M



First Floor

Floor Area 450 Sq Ft - 41.81 Sq M

Floor plan is for illustrative purposes only and is not to scale. Every attempt has been made to ensure the accuracy of the floor plan shown, however all measurements, fixtures, fittings and data shown are an approximate interpretation for illustrative purposes only.

lpaplus.com



This paper is
100% recyclable