



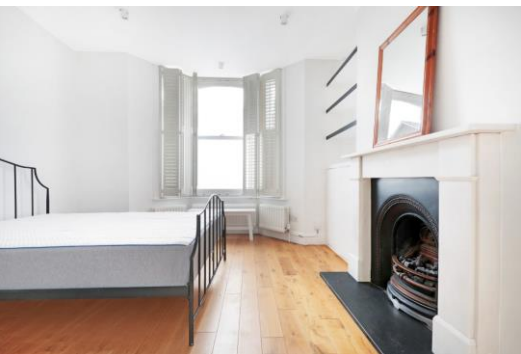
Brook Drive

London, SE11

£3,500 per month
(£807.69 per week)

2 SHARERS MAX. An immaculate three bedroom property comprising open plan living space and modern kitchen, three double bedrooms, two bathrooms and a roof terrace.

CHESTERTONS



Brook Drive

London, SE11

- THREE BEDROOM
- TWO BATHROOM
- TERRACE



An immaculate three bedroom property comprising open plan living space and modern kitchen, three double bedrooms, two bathrooms and a roof terrace.

Minimum Term: 12 months
Deposit Required: £4,038.46
Local Authority: London Borough of Southwark
Council Tax Band: D
EPC Rating: To be confirmed
Furnished

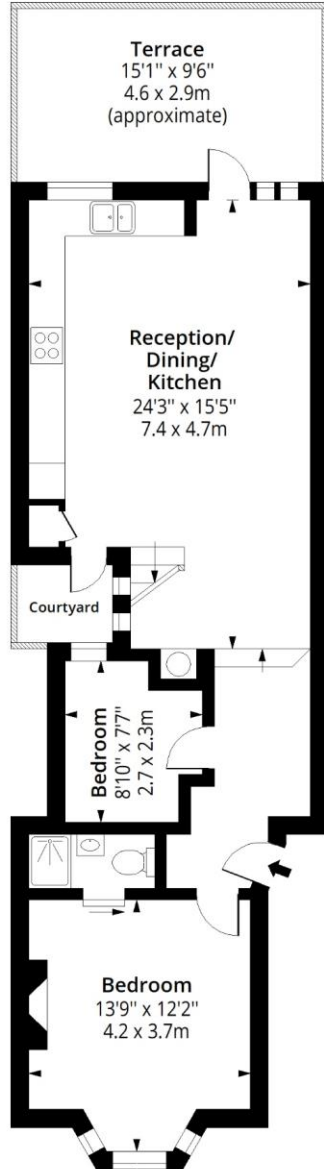
Chestertons Tower Bridge Lettings

220 Tower Bridge Road
Tower Bridge
London
SE1 2UP
towerbridge@chestertons.co.uk
02073576911
chestertons.co.uk

Additional tenant charges apply (fees apply to non-AST tenancies only)
Tenancy Agreement Fee: £300
References per Tenant/Guarantor: £60
Inventory check (approx. £100 – £250 inc. VAT)
[chestertons.co.uk/property-to-rent/applicable-fees](https://www.chestertons.co.uk/property-to-rent/applicable-fees)

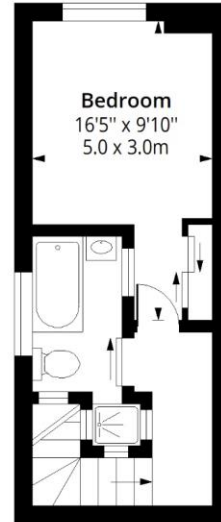
Brook Drive, SE11

Approx. Gross Internal Area 939 Sq Ft - 87.23 Sq M
Approx. Gross Terrace Area 81 Sq Ft - 16.81 Sq M



Ground Floor

Floor Area 677 Sq Ft - 62.89 Sq M



First Floor

Floor Area 262 Sq Ft - 24.34 Sq M



Measured according to RICS IPMS2. Floor plan is for illustrative purposes only and is not to scale. Every attempt has been made to ensure the accuracy of the floor plan shown, however all measurements, fixtures, fittings and data shown are an approximate interpretation for illustrative purposes only. 1 sq m = 10.76 sq feet.

ipaplus.com

Date: 01/12/2023



This paper is
100% recyclable