



3/1, 80 QUEENS DRIVE

QUEEN'S PARK

www.corumproperty.co.uk



3 | BEDROOMS
1 | BATHROOM
1 | PUBLIC ROOM

Occupying a top floor position in this beautiful terraced building, this flat offers generous levels of accommodation and stunning aspects to the front towards Queens Park.

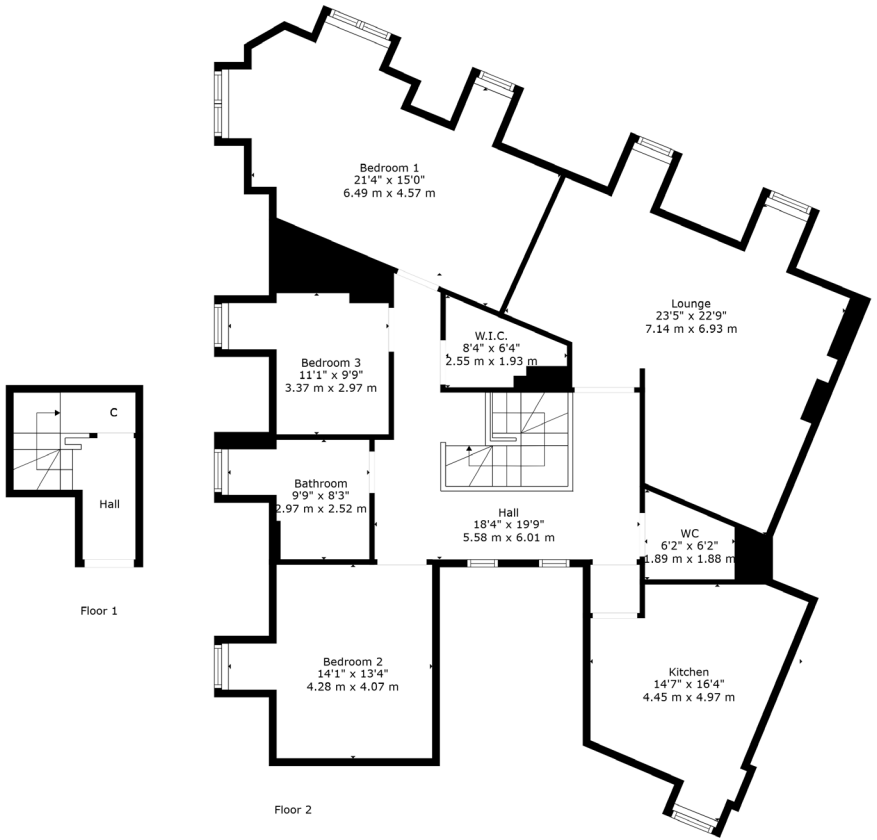
- Superb top floor flat
- Galleried landing
- 3 well proportioned bedrooms
- Bathroom and separate WC
- Large lounge / diner
- Gas central heating, double glazing, secure entry system

Amenities

The property is positioned within walking distance of shops and amenities upon Victoria Road and further afield on Pollokshaws Road/ Strathbungo where thriving coffee shops, restaurants and delicatessens can be found. More extensive amenities are available at the Morrisons store at Crossmyloof or Newlands.

Recreational pursuits are varied in nearby Queen's Park where nature walks/trails, all-weather football pitches, tennis courts and Glasshouse can be found.

Frequent public transport services provide rapid commuter access to the City Centre. The local railway station, a brisk five minutes walk at Torrisdale Street.



Sat Nav:
80 Queens Drive, Queens Park, G42 8BJ

SS5025

*All measurements and distances are approximate.
Floorplans are for illustration purposes and may not be to scale.

For the full home report visit
www.corumproperty.co.uk



WE'RE **SOLD** ON
YOUR FUTURE



Corum Shawlands
247 Kilmarnock Road, Shawlands, G41 3JF

Tel: 0141 636 7588

Email: shawlands@corumproperty.co.uk

www.corumproperty.co.uk