



**1/1, 11 DARNLEY GARDENS**

POLLOKSHIELDS

[www.corumproperty.co.uk](http://www.corumproperty.co.uk)





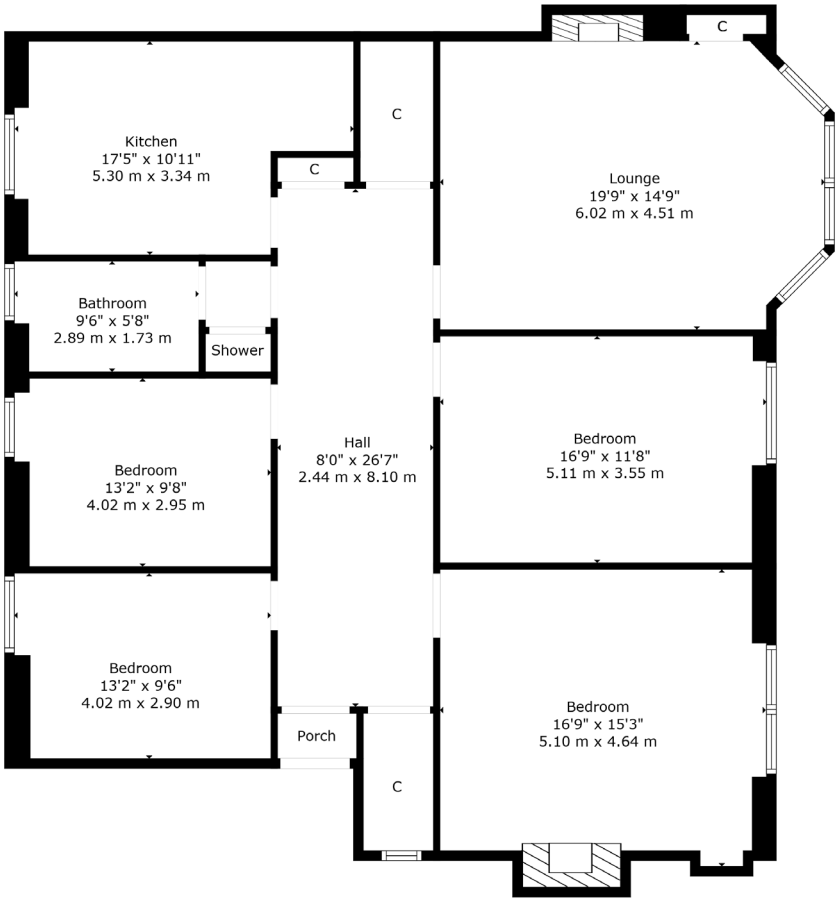
4 | BEDROOMS  
1 | BATHROOM  
1 | PUBLIC ROOM

Occupying a particularly bright position in an evergreen address, this is a lovely example of a five apartment townflat. Located next to popular amenities and regular public transport options, early internal inspection is essential.

- Beautiful resident's stairwell
- Versatile five apartment layout
- Well-proportioned accommodation
- Large dining sized kitchen to rear
- Traditional and modern finishes
- Excellent amenities close at hand

Amenities

11 Darnley Gardens is on the doorstep of thriving amenities including the coffee houses, restaurants, gastropubs and bakeries of Pollokshields and Strathbungo. More extensive facilities are available at the Crossmyloof Morrisons store or the Sainsburys metro store on Darnley Road. Recreational pursuits within the area are available at Queens Park, Maxwell Park or Pollok Country Park. Pollokshields West train station is approximately 200 yards walk, Shields Road underground station is one mile away and the M77, M74 or M8 connect the Southside of Glasgow to Scotland's motorway network.



Sat Nav:  
11 Darnley Gardens, Pollokshields, G41 4NQ

SS5016

\*All measurements and distances are approximate.  
Floorplans are for illustration purposes and may not be to scale.

For the full home report visit  
[www.corumproperty.co.uk](http://www.corumproperty.co.uk)



WE'RE **SOLD** ON  
YOUR FUTURE



Corum Shawlands  
247 Kilmarnock Road, Shawlands, G41 3JF

**Tel:** 0141 636 7588

**Email:** [shawlands@corumproperty.co.uk](mailto:shawlands@corumproperty.co.uk)

[www.corumproperty.co.uk](http://www.corumproperty.co.uk)