



FLAT 3/1, 25 STANMORE ROAD

MOUNT FLORIDA

www.corumproperty.co.uk



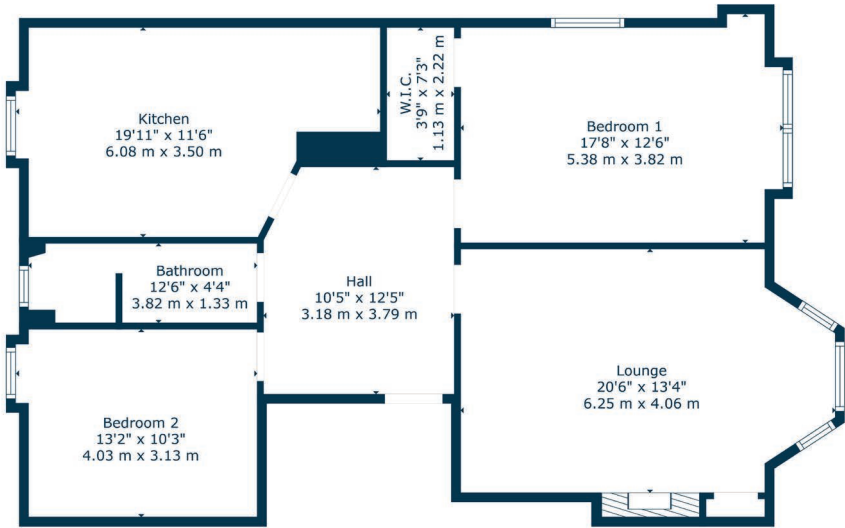
2 | BEDROOMS
1 | BATHROOM
1 | PUBLIC ROOM

Occupying a particularly bright top floor position in a popular Mount Florida address, this wonderful home has a trendy dining kitchen and impressive period features. The property has been very well cared for by our clients and it is presented for sale in turnkey condition.

- Bright top floor tenement home
- Several amenities in close proximity
- Large bay windowed lounge to front
- Two generous double bedrooms
- Fitted dining kitchen to rear
- Double glazing & gas central heating

Amenities

25 Stanmore Road is close to the popular independent coffee houses, restaurants, bars and shops in Mount Florida, Battlefield and across Queen's Park into Strathbungo. Recreational pursuits are available at Queens Park itself and Mount Florida train station is approximately 500 yards from the front door providing several services an hour into the city centre.



Sat Nav:
Flat 3/1, 25 Stanmore Road, Mount Florida, G42 9AH

SS5014

*All measurements and distances are approximate.
Floorplans are for illustration purposes and may not be to scale.

For the full home report visit
www.corumproperty.co.uk



WE'RE **SOLD** ON
YOUR FUTURE



Corum Shawlands
247 Kilmarnock Road, Shawlands, G41 3JF

Tel: 0141 636 7588
Email: shawlands@corumproperty.co.uk

www.corumproperty.co.uk