



1/2, 31 MINARD ROAD

SHAWLANDS

www.corumproperty.co.uk


c o r u m

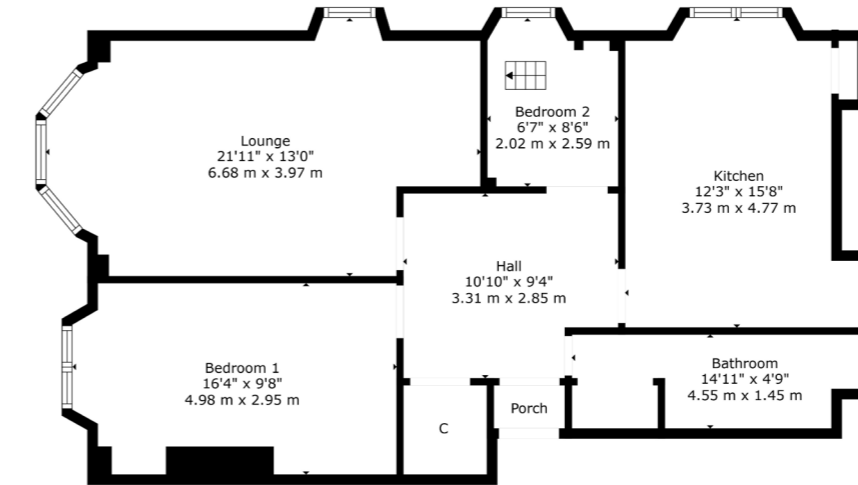
2 | BEDROOMS
1 | BATHROOM
1 | PUBLIC ROOM

Occupying a prominent first floor position where Minard Road meets Frankfort Street, this is a very cool two bedroom home. The property has been diligently cared for by our client and represents an excellent opportunity to live on the doorstep of all that Shawlands has to offer.

- First floor corner flat in centre of Shawlands
- Double aspect bay windowed lounge
- Two bedrooms, one with a bespoke bunk
- Fitted, double aspect dining sized kitchen
- Gas central heating & double glazing
- Superb location for amenities & transport

Amenities

31 Minard Road is in very close proximity to the thriving shops, bars, coffee houses, bakeries and restaurants of Shawlands. Sainsburys, Tesco, Co-op and M&S stores are all within a quarter of a mile. The fringe of Queens Park hosts a Farmers' Market on the 1st and 3rd Saturday of each month whilst recreational space, tennis courts and a refurbished bandstand are readily available within the park. Shawlands Civic Square is also nearby, designed to offer a destination for markets, dance, craft events, speakers and debate.



Sat Nav:
31 Minard Road, Shawlands, G41 2HP

SS4796

*All measurements and distances are approximate.
Floorplans are for illustration purposes and may not be to scale.

For the full home report visit
www.corumproperty.co.uk



WE'RE **SOLD** ON
YOUR FUTURE



Corum Shawlands
247 Kilmarnock Road, Shawlands, G41 3JF

Tel: 0141 636 7588

Email: shawlands@corumproperty.co.uk

www.corumproperty.co.uk