



0/1, 309 ALBERT DRIVE

POLLOKSHIELDS

www.corumproperty.co.uk



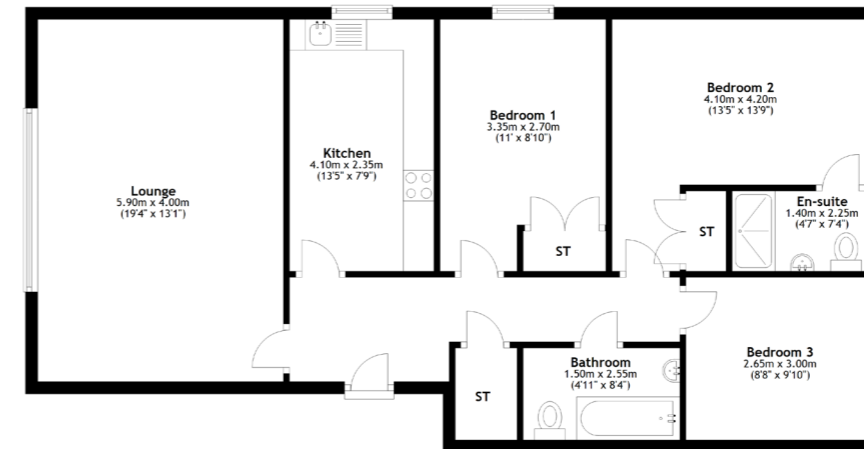
3 | BEDROOMS
2 | BATHROOMS
1 | PUBLIC ROOM

An easily accessible ground floor flat, set within an attractive modern development with residents' gardens and private garage.

- Modern ground floor flat
- Residents parking and private garage
- 3 bedrooms, 2 bathrooms
- Large lounge and modern kitchen
- Gas central heating, double glazing, secure entry system
- Well tended residents' gardens
- Great location close to shops and amenities

Amenities

309 Albert Drive is positioned within walking distance of shops and amenities upon Albert Drive, Nithsdale Road and Kildrostan Street where thriving coffee shops, restaurants and delicatessens can be found. More extensive amenities are available at the Marks and Spencer's store at Queens Park, the Sainsburys Local on Darnley Road, the Morrisons store at Crossmyloof or Newlands and the shopping mall at Silverburn is a short drive to the West. Recreational pursuits are varied namely at Clydesdale Cricket Club, Titwood Bowling and Tennis Club, Higgs Castle & Pollok Golf Club, Maxwell Park, Pollok Country Park where Pollok House and the world famous Burrell collection can be found, also Bellahouston Park & its Ski and Sports centre.



Sat Nav:
309 Albert Drive, Pollokshields, G41 5RP

SS4790

*All measurements and distances are approximate. Floorplans are for illustration purposes and may not be to scale.

For the full home report visit
www.corumproperty.co.uk



WE'RE **SOLD** ON
YOUR FUTURE



Corum Shawlands
247 Kilmarnock Road, Shawlands, G41 3JF

Tel: 0141 636 7588

Email: shawlands@corumproperty.co.uk

www.corumproperty.co.uk