



**FLAT 0/1, 1 GREENHOLME STREET**

CATHCART

[www.corumproperty.co.uk](http://www.corumproperty.co.uk)



1 | BEDROOM

1 | BATHROOM

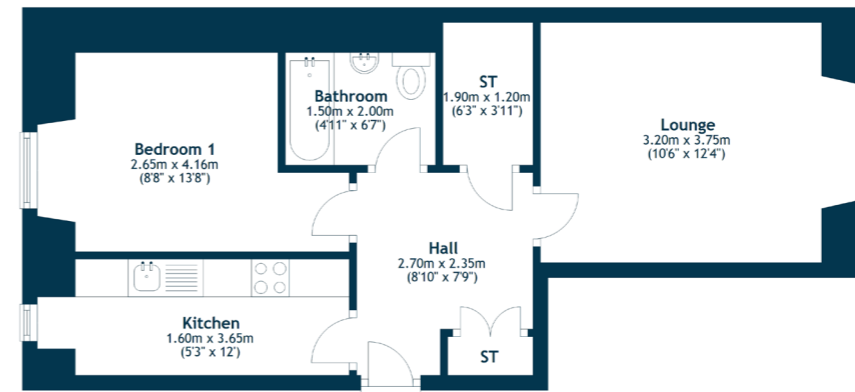
1 | PUBLIC ROOM

Positioned in a popular cul-de-sac just off Holmlea Road and presented to market in good condition, this one bedroom flat will attract immediate interest from shrewd buyers. The common stairwell and rear garden are both particularly well maintained allowing immediate peace of mind.

- Elevated ground floor flat
- Impressive lounge to the front
- Fitted galley style kitchen to rear
- Internal bathroom, shower over tub
- Double sized bedroom
- Double glazing & gas central heating

#### Amenities

1 Greenholme Street is within half a mile of thriving amenities on Holmlea Road, Clarkston Road and Battlefield Road where coffee houses, restaurants, newsagents and shops jostle for position. More extensive amenities are available at the Sainsburys store on Clarkston Road or at the 24 hour Asda store at Toryglen. The local railway station at Cathcart is approximately 500 yards from the front door.



Sat Nav:  
Flat 0/1, 1 Greenholme Street, Cathcart, G44 4DU

SS4788

\*All measurements and distances are approximate.  
Floorplans are for illustration purposes and may not be to scale.

For the full home report visit  
[www.corumproperty.co.uk](http://www.corumproperty.co.uk)



WE'RE **SOLD** ON  
YOUR FUTURE



Corum Shawlands  
247 Kilmarnock Road, Shawlands, G41 3JF

**Tel:** 0141 636 7588

**Email:** [shawlands@corumproperty.co.uk](mailto:shawlands@corumproperty.co.uk)

[www.corumproperty.co.uk](http://www.corumproperty.co.uk)