



10 HARELAW AVENUE

MUIREND

www.corumproperty.co.uk



3 | BEDROOMS
2 | BATHROOMS
2 | PUBLIC ROOMS

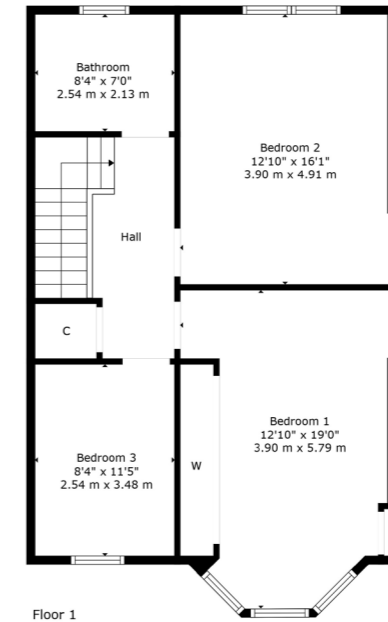
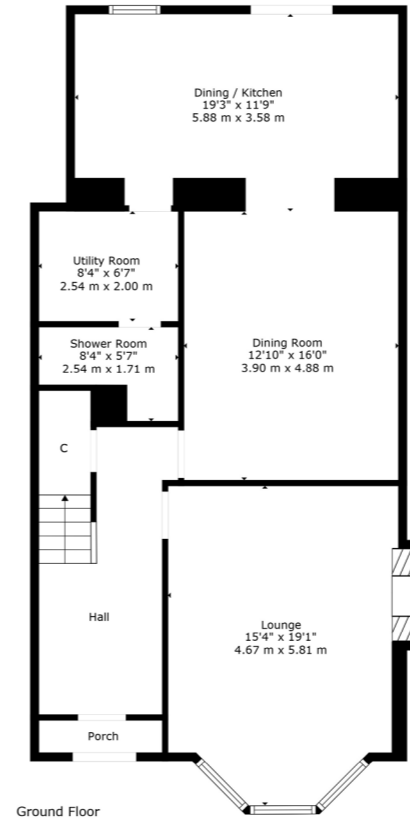
A deceptively spacious mid terraced villa that has been extended to the rear and well maintained by the current owners, including a replaced roof.

- Extended mid terrace villa
- 3 bedrooms, 2 bathrooms
- Lounge, sitting room, open plan to extended kitchen
- Enclosed gardens to the rear which are fully decked
- Great location close to shops and transport links

Amenities

10 Harelaw Avenue is positioned nearby Newlands Park, Newlands Tennis Club and reputable health clubs/gyms. Amenities are available at the Sainsburys store in Muirend, the Morrisons stores in Newlands or Giffnock, or Silverburn shopping centre is a short drive to the west.

Frequent public transport services provide rapid commuter access to the city centre, Muirend railway station is within 500 yards of the front door whilst the M77 is easily accessed (Junction 2 at Pollok) connecting to Scotland's motorway network and Glasgow Airport.



Sat Nav:
 10 Harelaw Avenue, Muirend, Glasgow, G44 3HZ
SS4771

*All measurements and distances are approximate. Floorplans are for illustration purposes and may not be to scale.

For the full home report visit www.corumproperty.co.uk



WE'RE **SOLD** ON
YOUR FUTURE



Corum Shawlands
247 Kilmarnock Road, Shawlands, G41 3JF

Tel: 0141 636 7588
Email: shawlands@corumproperty.co.uk

www.corumproperty.co.uk