



163A NITHSDALE ROAD

POLLOKSHIELDS

www.corumproperty.co.uk



4 | BEDROOMS

2 | BATHROOMS

1 | PUBLIC ROOM

A substantial upper conversion of an imposing detached villa, with generous accommodation (over 2200sqft), open aspects, private gardens and modern specification.

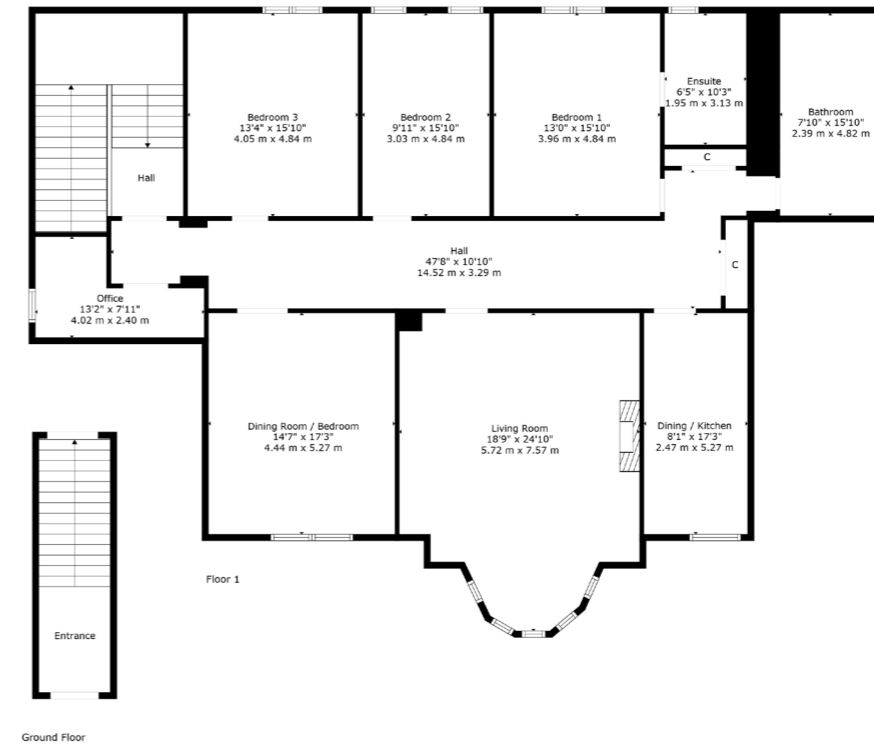
- Main door upper conversion
- Long hallway and excellent storage
- Large bay window lounge and dining kitchen
- 4 double bedrooms, huge main bathroom and en-suite
- Double glazing, gas central heating
- Lovely private southerly facing gardens at the rear

Amenities

The property is positioned within walking distance of shops and amenities upon Nithsdale Road and Kildrostan Street where thriving coffee shops, restaurants and delicatessens can be found. The thriving pocket of Strathbungo is approximately 400 yards walk to the East. More extensive amenities are available at the Marks and Spencer's store at Queens Park, the Sainsburys Local on Darnley Road, the Morrisons store at Crossmyloof, and the shopping mall at Silverburn is a short drive to the West.

Recreational pursuits are varied namely at Clydesdale Cricket Club, Titwood Bowling and Tennis Club, Maxwell Park, Pollok Country Park where Pollok House and the world famous Burrell collection can be found, also Bellahouston Park & its Ski and Sports centre.

Schooling is available locally at primary and secondary levels namely at Hutchesons' Grammar. There are also a number of pick up points for Glasgow's other leading independent schools.



Sat Nav:
163 Nithsdale Road, Pollokshields, G41 5QS

SS4769

*All measurements and distances are approximate.
Floorplans are for illustration purposes and may not be to scale.

For the full home report visit
www.corumproperty.co.uk



WE'RE **SOLD** ON
YOUR FUTURE



Corum Shawlands
247 Kilmarnock Road, Shawlands, G41 3JF

Tel: 0141 636 7588

Email: shawlands@corumproperty.co.uk

www.corumproperty.co.uk