



**28 KINGSFORD AVENUE**

MUIREND

[www.corumproperty.co.uk](http://www.corumproperty.co.uk)

  
c o r u m

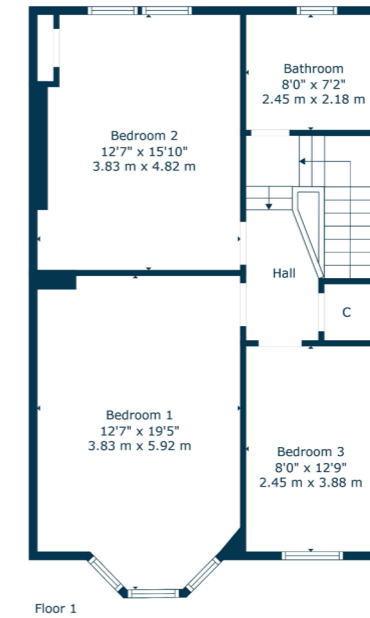
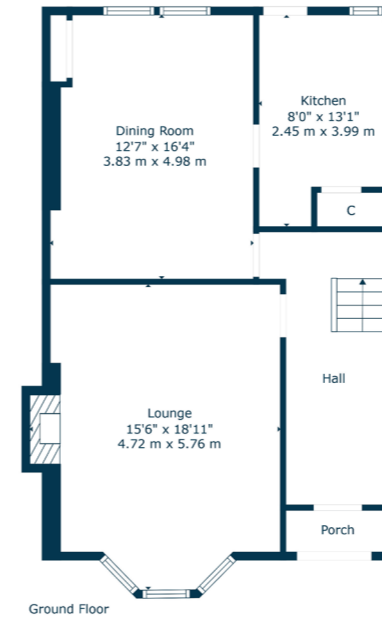
**3 | BEDROOMS**  
**1 | BATHROOM**  
**2 | PUBLIC ROOMS**

Positioned in established garden grounds and beautifully presented to market, this terraced property originally dates from the early 1900s. The subjects deliver five principal apartments alongside a fitted kitchen, a contemporary shower room and a sizeable attic space.

- Attractive stone fronted mid terrace
- Enclosed South East facing rear garden
- Two large ground floor public rooms
- Three versatile double bedrooms
- Sleek three piece shower room
- Excellent amenities and public transport

**Amenities**

28 Kingsford Avenue is within one mile of the Nuffield Giffnock Gym, Newlands Tennis Club and Newlands Park where the popular Dandelion Café is found. Amenities are available at the nearby Sainsbury's store in Muirend or at the Silverburn shopping centre near Pollok. Reputable state schooling is available locally whilst there are a number of pick up points in the Southside for Glasgow's independent schools. Muirend train station is approximately 500 yards from the front door served by the Neilston line into Glasgow central station.



**Sat Nav:**  
 28 Kingsford Avenue, Muirend, G44 3EU

**SS4768**

\*All measurements and distances are approximate. Floorplans are for illustration purposes and may not be to scale.

For the full home report visit  
[www.corumproperty.co.uk](http://www.corumproperty.co.uk)



WE'RE **SOLD** ON  
YOUR FUTURE



Corum Shawlands  
247 Kilmarnock Road, Shawlands, G41 3JF

**Tel:** 0141 636 7588

**Email:** [shawlands@corumproperty.co.uk](mailto:shawlands@corumproperty.co.uk)

[www.corumproperty.co.uk](http://www.corumproperty.co.uk)