



192A NITHSDALE ROAD

POLLOKSHIELDS

www.corumproperty.co.uk



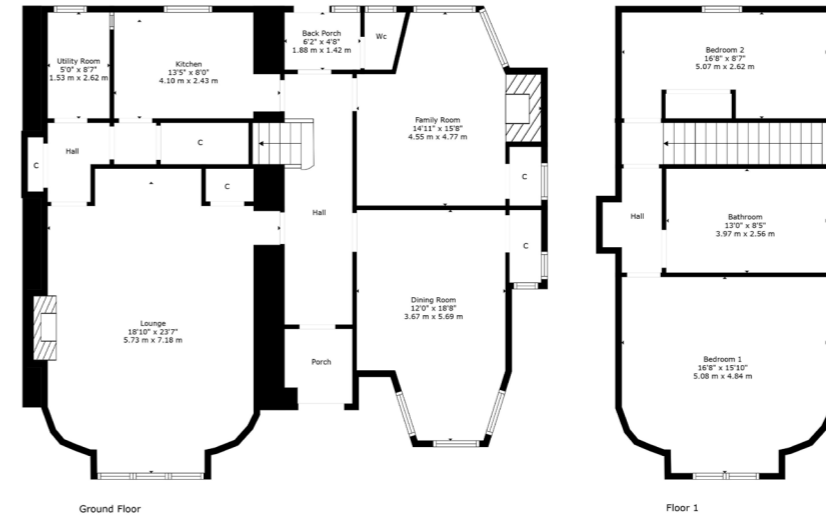
3 | BEDROOMS
1 | BATHROOM
2 | PUBLIC ROOMS

Positioned in established garden grounds and retaining some beautiful period features, this delightful conversion sits proud from Nithsdale Road below. Formerly a detached property, the building was amicably split around 1960 and the subjects for sale have all the hallmarks of a semi-detached home.

- Handsome stone fronted conversion
- Five versatile apartments in total
- Potential to refurbish throughout
- Beautiful period features retained
- Established front & rear gardens
- Private garden grounds

Amenities

192a Nithsdale Road is positioned in the heart of Pollokshields within half a mile of amenities on Nithsdale Road/Kildrostan Street where coffee houses, restaurants and independent retailers jostle for position. Maxwell Park and Pollok Country Park are both within one mile of the property, Maxwell Park or Dumbreck train stations are also nearby and Shields Road underground station is less than two miles away. Junction 1 of the M77 connects the Southside of Glasgow to Scotland's motorway network.



Sat Nav:
 192 Nithsdale Road, Pollokshields, G41 5EU

SS4761

*All measurements and distances are approximate. Floorplans are for illustration purposes and may not be to scale.

For the full home report visit
www.corumproperty.co.uk



WE'RE **SOLD** ON
YOUR FUTURE



C O R U M

Corum Shawlands
247 Kilmarnock Road, Shawlands, G41 3JF

Tel: 0141 636 7588

Email: shawlands@corumproperty.co.uk

www.corumproperty.co.uk