



## 2/1, 5 FESTIVAL COURT

PRINCES QUAY, GLASGOW

[www.corumproperty.co.uk](http://www.corumproperty.co.uk)





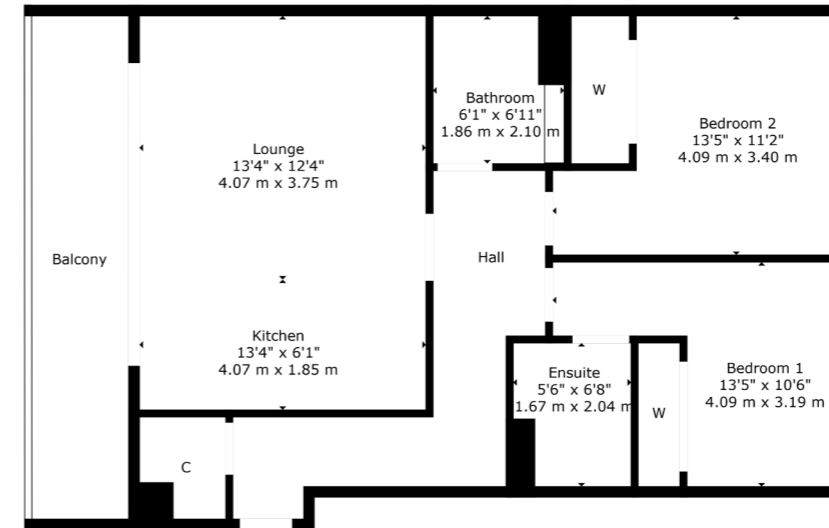
2 | BEDROOMS  
2 | BATHROOMS  
1 | PUBLIC ROOM

A modern 'Cala' built second floor flat, set within an attractive new development called 'Princes Quay'. The property has 2 bedrooms, 2 bathrooms and a full width balcony to the front.

- Entrance hallway via secure entry system
- Lift access to all floors
- Main lounge open plan to kitchen
- Full width balcony to the front
- 2 bedrooms (both with inbuilt storage)
- Main bathroom, en-suite shower room
- Private allocated parking space

**Amenities**

The Princes Quay development is positioned on the South side of the river Clyde close to the "Squinty Bridge", the Finnieston Crane, the SSE Hydro and the Armadillo. The property is within walking distance of nearby Finnieston where thriving coffee houses, bars, restaurants and independent shops can be found. The Village Gym and the Nuffield Gym are both nearby providing swimming pools and restaurants whilst Festival Park and Kelvingrove Park are within one mile of the front door. The local Exhibition Centre train station and Cessnock Underground are nearby and the South West cycle route also gives segregated access around the city. Frequent public transport services provide immediate commuter links into the City Centre itself.



**Sat Nav:**  
5 Festival Court, Princes Quay, Glasgow, G51 1B

**SS4755**

\*All measurements and distances are approximate. Floorplans are for illustration purposes and may not be to scale.

For the full home report visit  
[www.corumproperty.co.uk](http://www.corumproperty.co.uk)



WE'RE **SOLD** ON  
YOUR FUTURE



Corum Shawlands  
247 Kilmarnock Road, Shawlands, G41 3JF

Tel: 0141 636 7588  
Email: [shawlands@corumproperty.co.uk](mailto:shawlands@corumproperty.co.uk)

[www.corumproperty.co.uk](http://www.corumproperty.co.uk)