



PRESENTS

HOLMWOOD HEIGHTS

80 INVERLAIR AVENUE



corum

www.corumproperty.co.uk

HOLMWOOD HEIGHTS

An exciting development of 59 luxury apartments and penthouses situated in the bustling community of Cathcart





WELCOME TO GLASGOW'S SOUTHSIDE

Situated in the bustling community of Cathcart, right in the heart of Glasgow's Southside, Holmwood Heights is ideally placed to offer residents the best access to the local area.

There are a number of lovely parks on your doorstep, including Pollok Country Park and Queens Park, both of which offer a plethora of outdoor activities and spaces to enjoy.

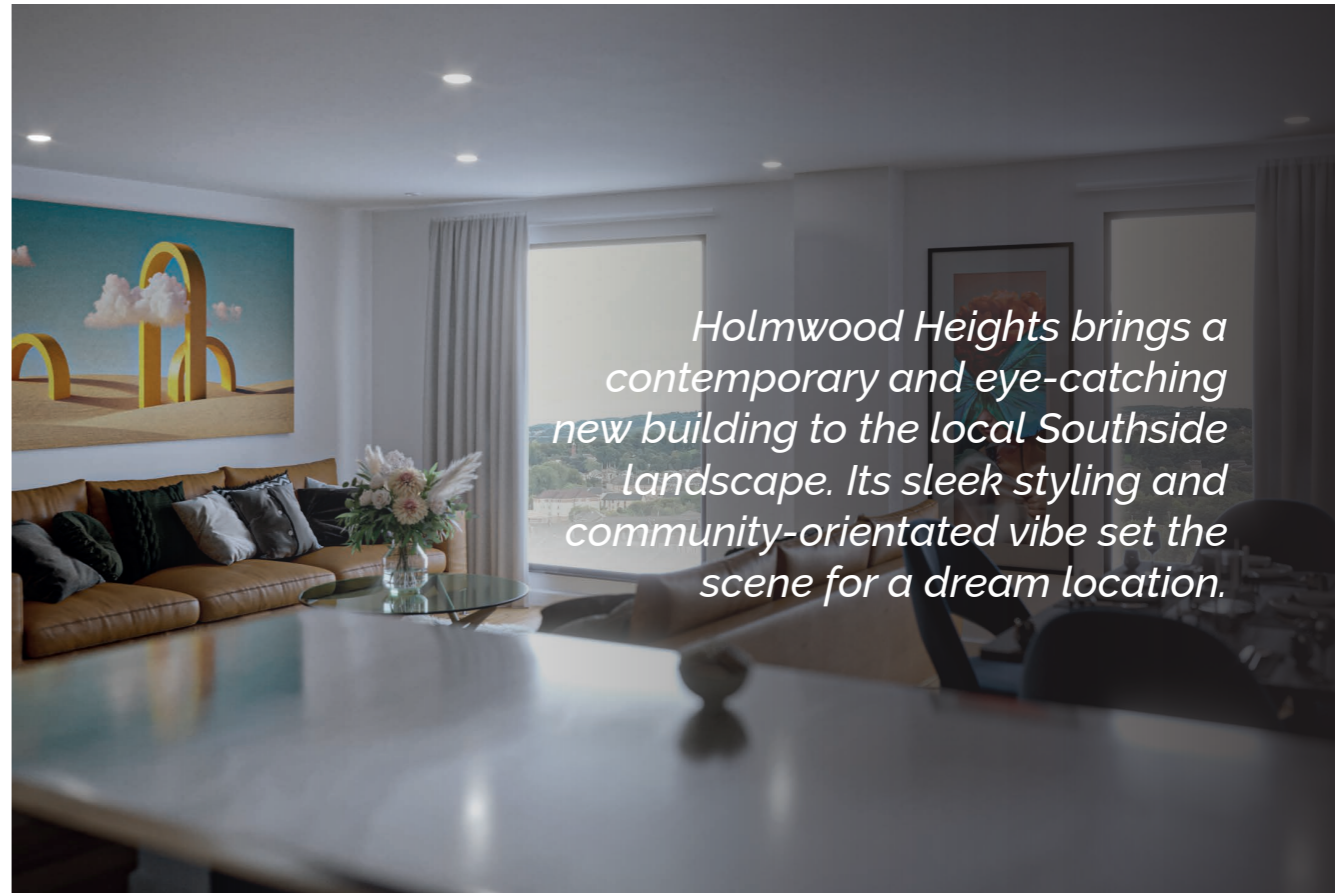
The Southside of the city really has become one of the most sought-after locales in Glasgow, its collection of independent bars & restaurants, coffee shops, boutiques and museums have made it a hub for those that love both culture and community.

Schooling in the area has become one of the main reasons people want to live here and there are a choice of excellent nurseries and highly regarded public and private schools.

Holmwood Heights is also perfectly placed to provide ease of access to the City Centre and beyond - with excellent rail, car and bus routes, everyone is catered for. Additionally, Glasgow International Airport is easily accessed via M77 & M8.



LUXURY LIVING FOR MODERN PEOPLE



Holmwood Heights brings a contemporary and eye-catching new building to the local Southside landscape. Its sleek styling and community-orientated vibe set the scene for a dream location.



The spacious, open-plan layout of the apartments is designed to offer relaxed, flexible and modern accommodation for residents whilst each apartment at Holmwood Heights will be finished with state-of-the-art specification using some of the smartest products available.

APARTMENT SPECIFICATION

LIVING ROOMS

- Choice of Karndean flooring.
- Television and telephone points.
- Full height windows with anthracite casings.
- Finished in white emulsion paint.

BEDROOMS

- Fitted wardrobes with glass sliding doors, hanging rails and fixed shelving.
- Soft, luxurious carpets.
- Pendant lighting in all bedrooms.

BATHROOMS

- Porcelanosa tiling to all wet areas and floors.
- White sanitary ware with chrome Hansgrohe taps.
- Chrome thermostatic heated towel rail.
- Thermostatic / Electric showers.
- Full-size mirror above basin.

KITCHENS

- Contemporary kitchens by award winning supplier Creative Designs.
- Integrated Bosch appliances including; 4-zone induction hob, built-in oven, microwave*, and fridge freezer.
- Fully integrated energy efficient Bosch dishwasher.
- Choice of colours and finishes for cabinet door & drawer fronts.
- Choice of 25mm laminate worktops as standard with optional upgrade to Silestone worktop.
- Stainless steel sinks and taps.
- Glass splashback behind induction hob.

TECHNICAL FEATURES

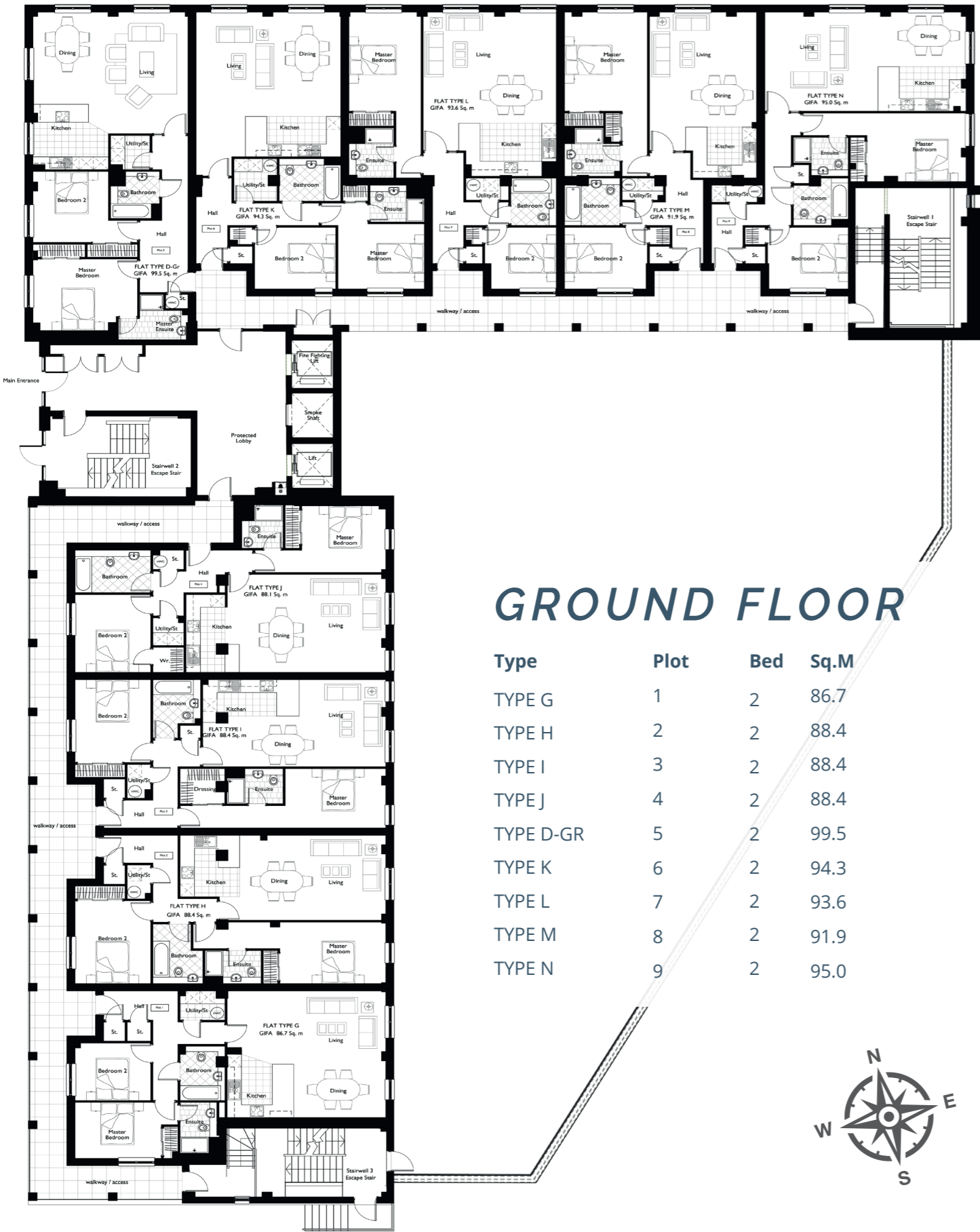
- Double glazing throughout.
- Electric heating.
- 4 panel ladder doors finished in white.
- Brushed chrome ironmongery throughout.
- Free-standing Bosch washing/drying machine.
- Video controlled door entry.
- Integrated USB charging points.
- All apartments fitted with smoke, heat and carbon dioxide detectors.
- Communal satellite dish for all apartments.

COMMUNAL FEATURES

- Lift access to all floors.
- Allocated car parking.
- Roof terraces/balconies available on selected plots.
- Communal outdoor areas.
- 10 year Buildzone Guarantee.
- Factoring by Taylor & Martin.

*Certain features may only be available on select plots. Please consult sales team for full details.





GROUND FLOOR

Type	Plot	Bed	Sq.M
TYPE G	1	2	86.7
TYPE H	2	2	88.4
TYPE I	3	2	88.4
TYPE J	4	2	88.4
TYPE D-GR	5	2	99.5
TYPE K	6	2	94.3
TYPE L	7	2	93.6
TYPE M	8	2	91.9
TYPE N	9	2	95.0



Ground Floor | Plot 1

TYPE G

2 BEDROOM
2 BATHROOM
1 PUBLIC ROOM

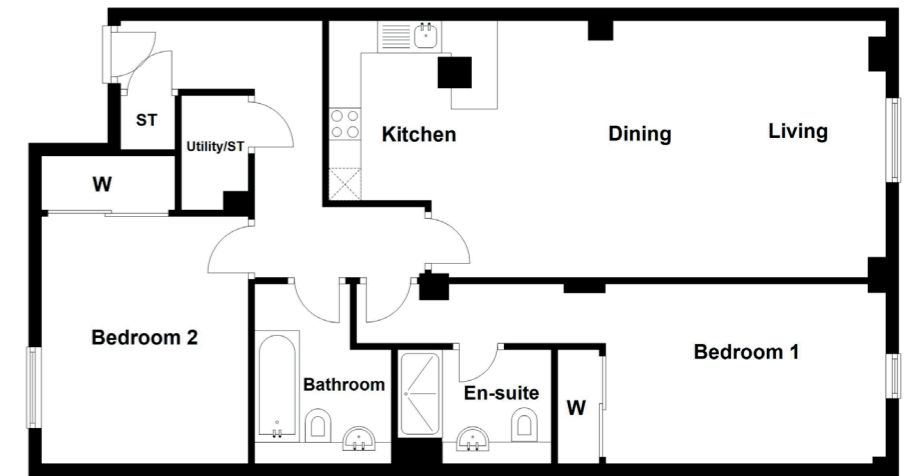
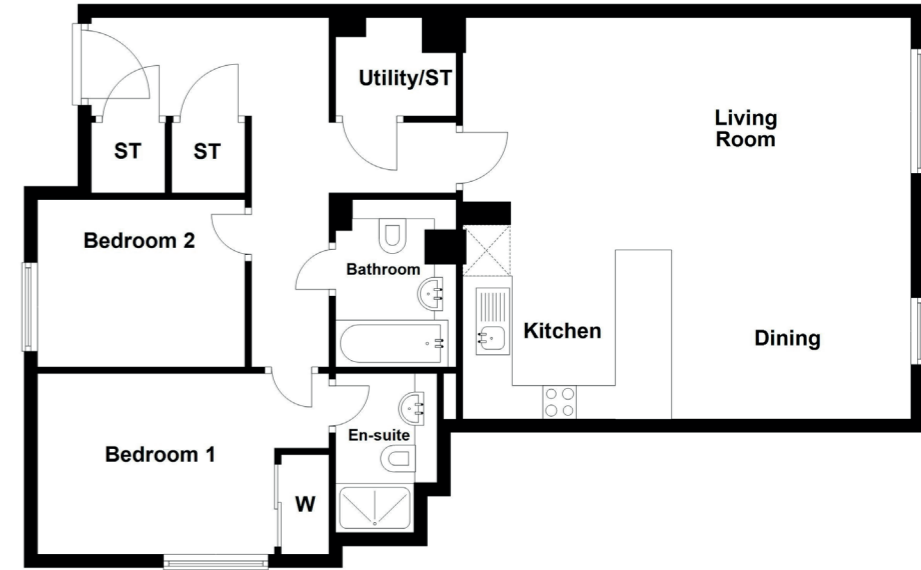
Space.	Dim. (ft)	Dim. (m)
Lounge	21.85" x 8.83"	6.66 x 2.69
Dining	12.80" x 10.76"	3.90 x 3.28
Kitchen	8.86" x 10.76"	2.70 x 3.28
Master Bed	14.17" x 8.66"	4.32 x 2.64
Bedroom 2	10.43" x 8.86"	3.18 x 2.70
Bathroom	6.17" x 8.37"	1.88 x 2.55
En-suite	5.05" x 7.81"	1.54 x 2.38

Ground Floor | Plot 2

TYPE H

2 BEDROOM
2 BATHROOM
1 PUBLIC ROOM

Space.	Dim. (ft)	Dim. (m)
Lounge	11.32" x 13.12"	3.45 x 4.00
Dining	8.60" x 13.12"	2.62 x 4.00
Kitchen	8.43" x 9.51"	2.57 x 2.90
Master Bed	26.51" x 9.51"	8.08 x 2.90
Bedroom 2	10.40" x 12.80"	3.17 x 3.90
Bathroom	6.89" x 6.82"	2.10 x 2.08
En-suite	7.71" x 5.09"	2.35 x 1.55

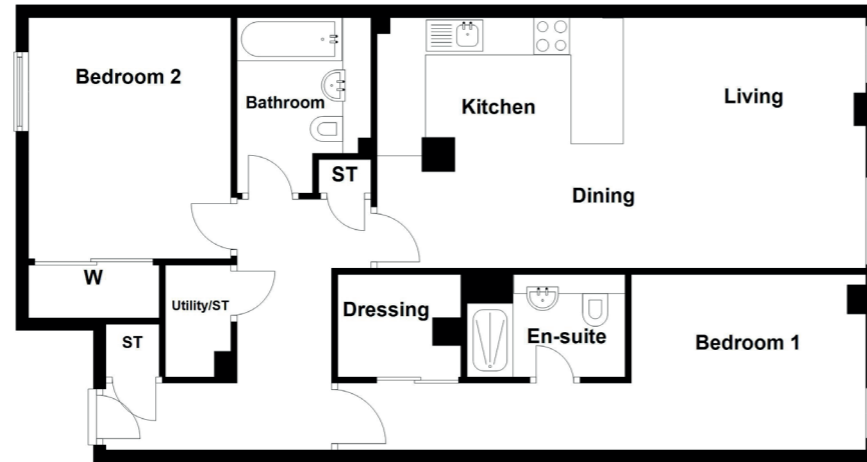


Ground Floor | Plot 3

TYPE I

2 BEDROOM
2 BATHROOM
1 PUBLIC ROOM

Space.	Dim. (ft)	Dim. (m)
Lounge	9.84" x 13.45"	3.00 x 4.10
Dining	7.48" x 13.45"	2.28 x 4.10
Kitchen	7.87" x 9.45"	2.40 x 2.88
Master Bed	28.35" x 9.19"	8.64 x 2.80
Bedroom 2	10.40" x 12.80"	3.17 x 3.90
Bathroom	6.56" x 9.02"	2.00 x 2.75
En-suite	7.71" x 5.41"	2.35 x 1.65

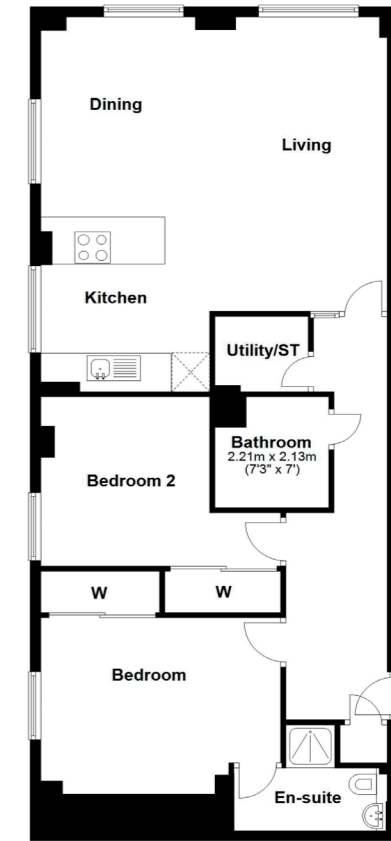


Ground Floor | Plot 1

TYPE D-Gr

2 BEDROOM
2 BATHROOM
1 PUBLIC ROOM

Space.	Dim. (ft)	Dim. (m)
Lounge	10.99" x 18.73"	3.35 x 5.71
Dining	7.71" x 12.17"	2.35 x 3.71
Kitchen	10.33" x 12.17"	3.15 x 3.71
Master Bed	14.40" x 11.06"	4.39 x 3.37
Bedroom 2	14.40" x 10.96"	4.39 x 3.34
Bathroom	6.73" x 7.25"	2.05 x 2.21
En-suite	9.32" x 6.89"	2.84 x 2.10

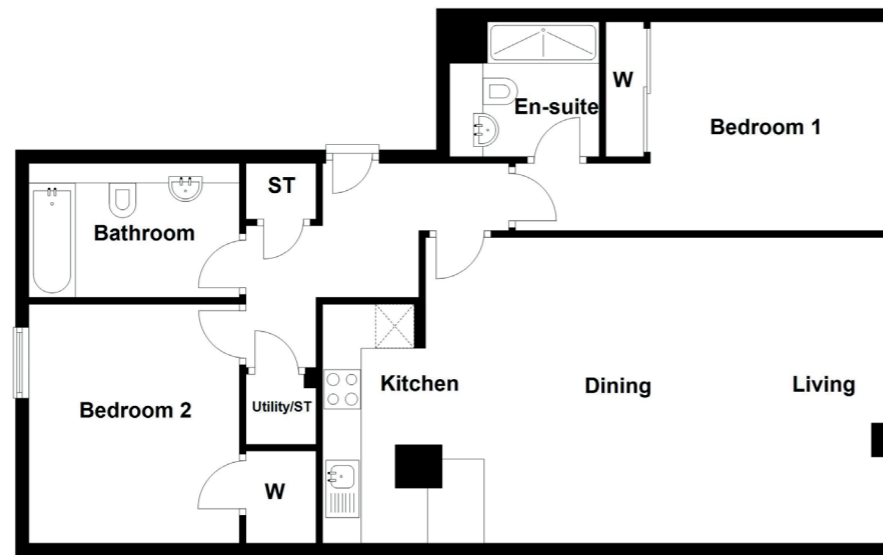


Ground Floor | Plot 4

TYPE J

2 BEDROOM
2 BATHROOM
1 PUBLIC ROOM

Space.	Dim. (ft)	Dim. (m)
Lounge	11.32" x 15.12"	3.45 x 4.61
Dining	8.99" x 10.10"	2.74 x 3.08
Kitchen	7.19" x 12.01"	2.19 x 3.66
Master Bed	17.75" x 11.19"	5.41 x 3.41
Bedroom 2	10.40" x 12.01"	3.17 x 3.66
Bathroom	10.40" x 6.56"	3.17 x 2.00
En-suite	5.68" x 6.69"	1.73 x 2.04



Ground Floor | Plot 6

TYPE K

2 BEDROOM
2 BATHROOM
1 PUBLIC ROOM

Space.	Dim. (ft)	Dim. (m)
Lounge	10.70" x 14.17"	3.26 x 4.32
Dining	9.19" x 14.17"	2.80 x 4.32
Kitchen	15.03" x 7.87"	4.58 x 2.40
Master Bed	11.84" x 13.32"	3.61 x 4.06
Bedroom 2	11.15" x 9.51"	3.40 x 2.90
Bathroom	8.46" x 6.56"	2.58 x 2.00
En-suite	7.45" x 5.68"	2.27 x 1.73

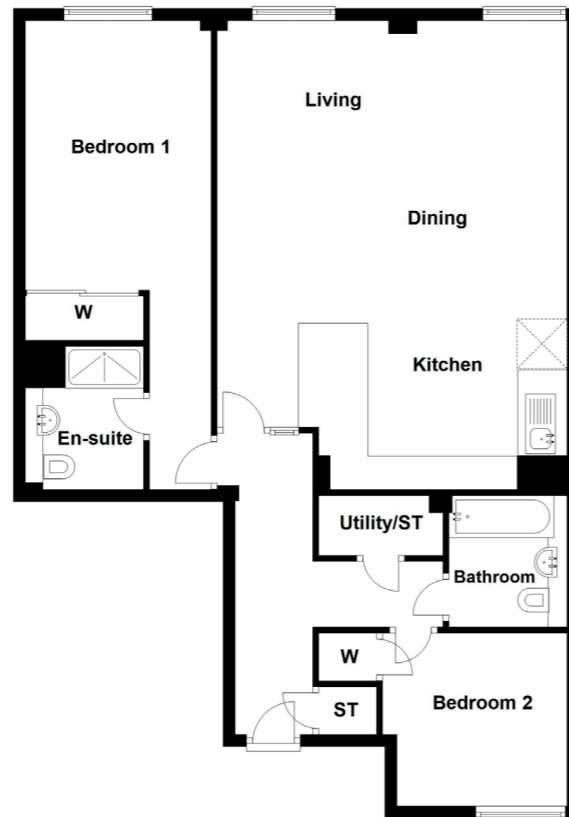


Ground Floor | Plot 7

TYPE L

2 BEDROOM
2 BATHROOM
1 PUBLIC ROOM

Space.	Dim. (ft)	Dim. (m)
Lounge	18.34" x 10.76"	5.59 x 3.28
Dining	13.45" x 10.76"	4.10 x 3.28
Kitchen	13.45" x 8.20"	4.10 x 2.50
Master Bed	9.94" x 25.79"	3.03 x 7.86
Bedroom 2	9.84" x 9.51"	3.00 x 2.90
Bathroom	7.28" x 6.23"	2.22 x 1.90
En-suite	5.94" x 7.71"	1.81 x 2.35

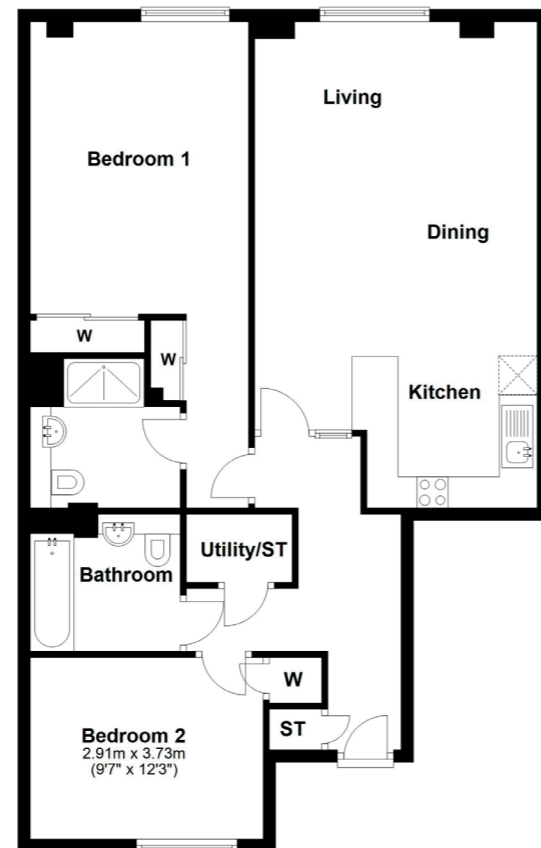


Ground Floor | Plot 8

TYPE M

2 BEDROOM
2 BATHROOM
1 PUBLIC ROOM

Space.	Dim. (ft)	Dim. (m)
Lounge	14.76" x 10.76"	4.50 x 3.28
Dining	14.76" x 7.97"	4.50 x 2.43
Kitchen	9.78" x 7.87"	2.98 x 2.40
Master Bed	11.38" x 26.15"	3.47 x 7.97
Bedroom 2	11.22" x 9.51"	3.42 x 2.90
Bathroom	7.61" x 7.28"	2.32 x 2.22
En-suite	7.61 x 7.45	2.32 x 2.27

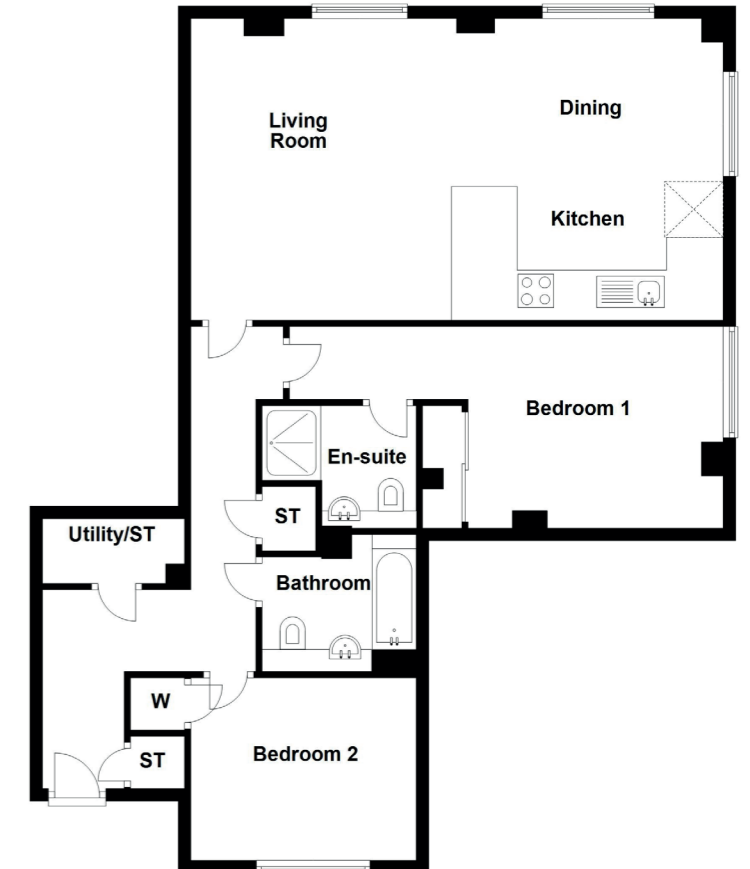


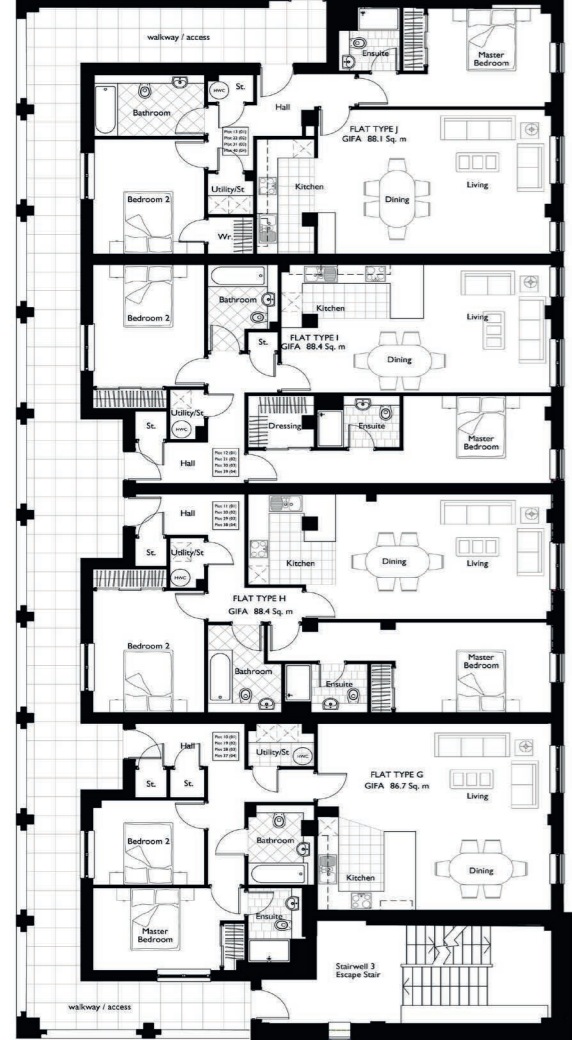
Ground Floor | Plot 9

TYPE N

2 BEDROOM
2 BATHROOM
1 PUBLIC ROOM

Space.	Dim. (ft)	Dim. (m)
Lounge	15.58" x 16.08"	4.75 x 4.90
Dining	12.89" x 8.60"	3.93 x 2.62
Kitchen	12.89" x 6.89"	3.93 x 2.10
Master Bed	21.65" x 10.56"	6.60 x 3.22
Bedroom 2	10.89" x 9.51"	3.32 x 2.90
Bathroom	7.51" x 7.28"	2.29 x 2.22
En-suite	7.51" x 6.14"	2.29 x 1.87





FIRST - FOURTH FLOOR

Type	Plot	Bed	Sq.M
TYPE G	10, 19, 28, 37	2	86.7
TYPE H	11, 20, 29, 38	2	88.4
TYPE I	12, 21, 30, 39	2	88.4
TYPE J	13, 22, 31, 40	2	88.4
TYPE D	14, 23, 32, 41	3	119.0
TYPE K	15, 24, 33, 42	2	94.3
TYPE L	16, 25, 34, 43	2	93.6
TYPE M	17, 26, 35, 44	2	91.9
TYPE N	18, 27, 36, 45	2	95.0



Plots 10, 19, 28 & 37

TYPE G

2 BEDROOM
2 BATHROOM
1 PUBLIC ROOM

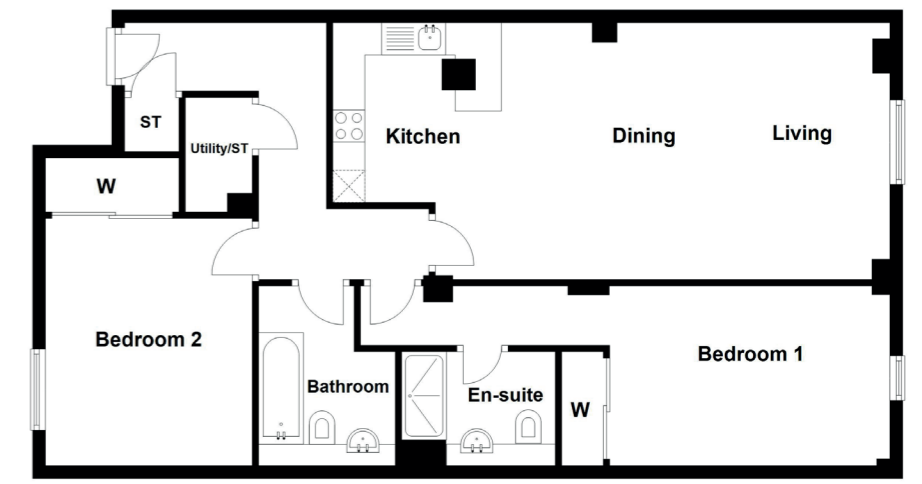
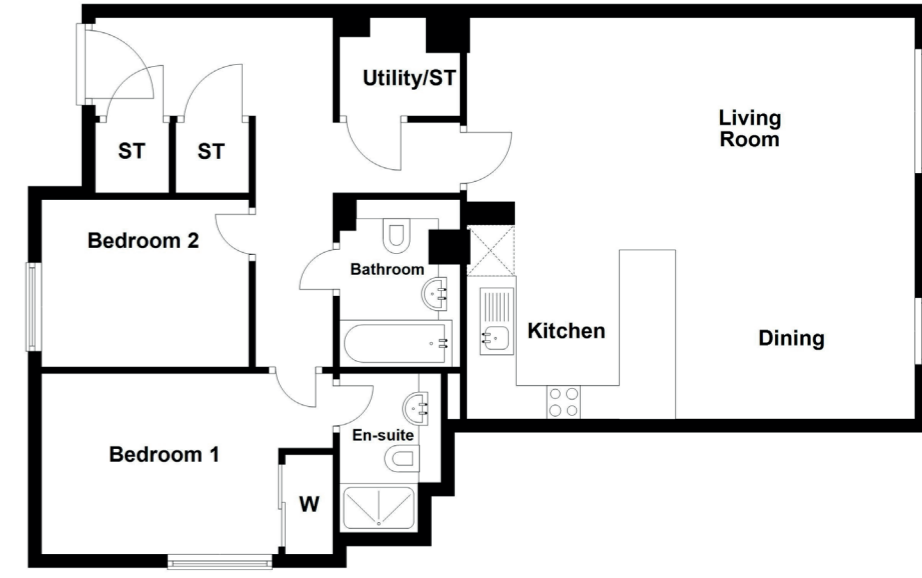
Space.	Dim. (ft)	Dim. (m)
Lounge	21.85" x 8.83"	6.66 x 2.69
Dining	12.80" x 10.76"	3.90 x 3.28
Kitchen	8.86" x 10.76"	2.70 x 3.28
Master Bed	14.17" x 8.66"	4.32 x 2.64
Bedroom 2	10.43" x 8.86"	3.18 x 2.70
Bathroom	6.17" x 8.37"	1.88 x 2.55
En-suite	5.05" x 7.81"	1.54 x 2.38

Plots 11, 20, 29 & 38

TYPE H

2 BEDROOM
2 BATHROOM
1 PUBLIC ROOM

Space.	Dim. (ft)	Dim. (m)
Lounge	11.32" x 13.12"	3.45 x 4.00
Dining	8.60" x 13.12"	2.62 x 4.00
Kitchen	8.43" x 9.51"	2.57 x 2.90
Master Bed	26.51" x 9.51"	8.08 x 2.90
Bedroom 2	10.40" x 12.80"	3.17 x 3.90
Bathroom	6.89" x 6.82"	2.10 x 2.08
En-suite	7.71" x 5.09"	2.35 x 1.55

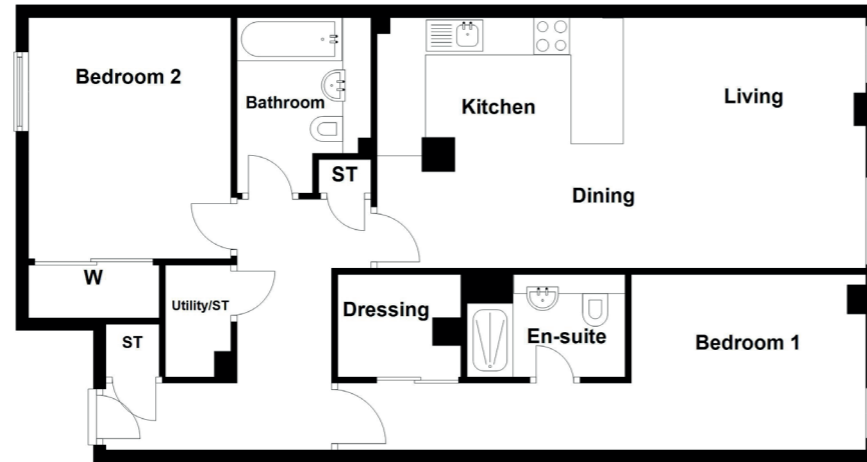


Plots 12, 21, 30 & 39

TYPE I

2 BEDROOM
2 BATHROOM
1 PUBLIC ROOM

Space.	Dim. (ft)	Dim. (m)
Lounge	9.84" x 13.45"	3.00 x 4.10
Dining	7.48" x 13.45"	2.28 x 4.10
Kitchen	7.87" x 9.45"	2.40 x 2.88
Master Bed	28.35" x 9.19"	8.64 x 2.80
Bedroom 2	10.40" x 12.80"	3.17 x 3.90
Bathroom	6.56" x 9.02"	2.00 x 2.75
En-suite	7.71" x 5.41"	2.35 x 1.65

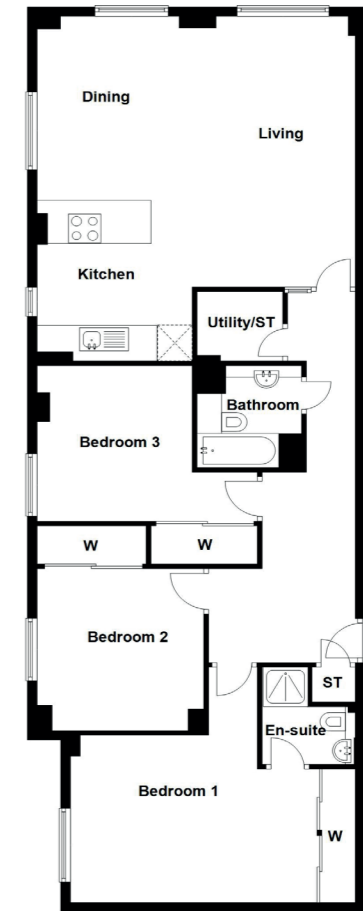


Plots 14, 23, 32 & 41

TYPE D

2 BEDROOM
2 BATHROOM
1 PUBLIC ROOM

Space.	Dim. (ft)	Dim. (m)
Lounge	10.99" x 18.73"	3.35 x 5.71
Dining	7.71" x 12.17"	2.35 x 3.71
Kitchen	10.33" x 12.17"	3.15 x 3.71
Master Bed	14.40" x 11.06"	4.39 x 3.37
Bedroom 2	14.40" x 10.96"	4.39 x 3.34
Bathroom	6.73" x 7.25"	2.05 x 2.21
En-suite	9.32" x 6.89"	2.84 x 2.10

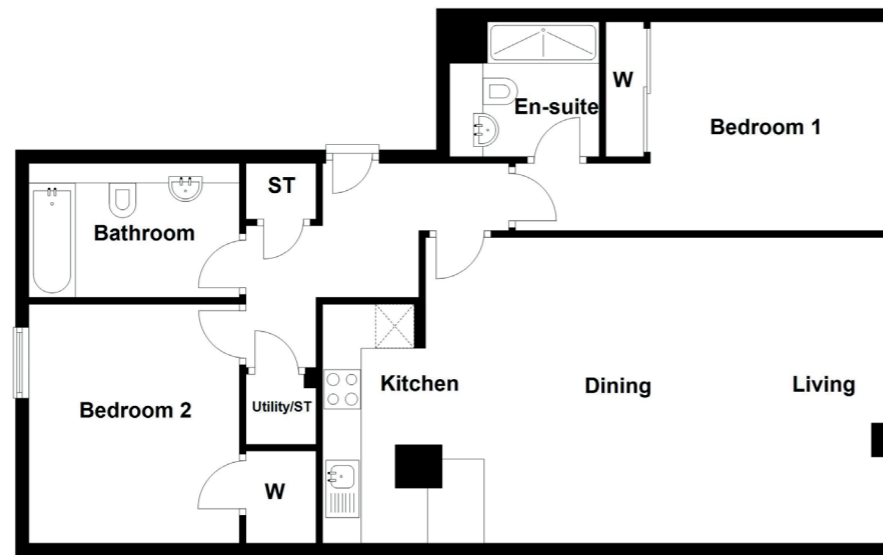


Plots 13, 22, 31 & 40

TYPE J

2 BEDROOM
2 BATHROOM
1 PUBLIC ROOM

Space.	Dim. (ft)	Dim. (m)
Lounge	11.32" x 15.12"	3.45 x 4.61
Dining	8.99" x 10.10"	2.74 x 3.08
Kitchen	7.19" x 12.01"	2.19 x 3.66
Master Bed	17.75" x 11.19"	5.41 x 3.41
Bedroom 2	10.40" x 12.01"	3.17 x 3.66
Bathroom	10.40" x 6.56"	3.17 x 2.00
En-suite	5.68" x 6.69"	1.73 x 2.04



Plots 15, 24, 33 & 42

TYPE K

2 BEDROOM
2 BATHROOM
1 PUBLIC ROOM

Space.	Dim. (ft)	Dim. (m)
Lounge	10.70" x 14.17"	3.26 x 4.32
Dining	9.19" x 14.17"	2.80 x 4.32
Kitchen	15.03" x 7.87"	4.58 x 2.40
Master Bed	11.84" x 13.32"	3.61 x 4.06
Bedroom 2	11.15" x 9.51"	3.40 x 2.90
Bathroom	8.46" x 6.56"	2.58 x 2.00
En-suite	7.45" x 5.68"	2.27 x 1.73

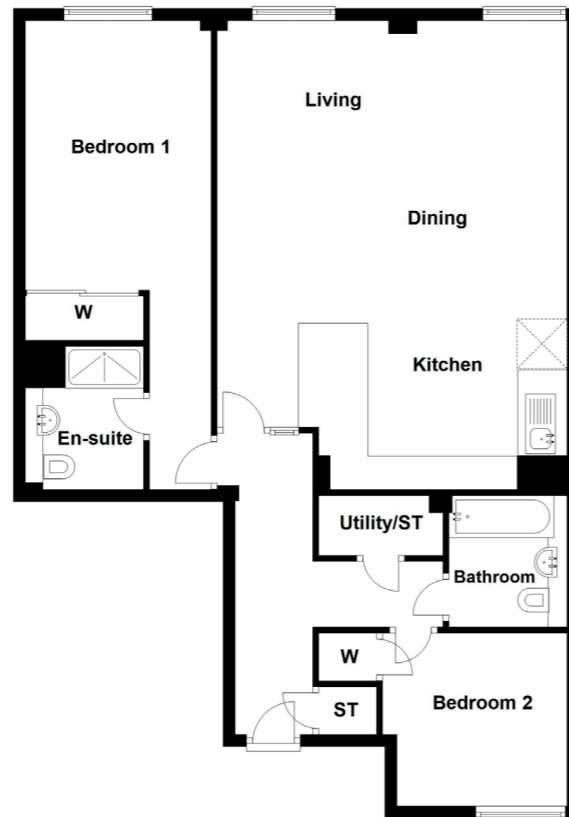


Plots 16, 25, 34 & 43

TYPE L

2 BEDROOM
2 BATHROOM
1 PUBLIC ROOM

Space.	Dim. (ft)	Dim. (m)
Lounge	18.34" x 10.76"	5.59 x 3.28
Dining	13.45" x 10.76"	4.10 x 3.28
Kitchen	13.45" x 8.20"	4.10 x 2.50
Master Bed	9.94" x 25.79"	3.03 x 7.86
Bedroom 2	9.84" x 9.51"	3.00 x 2.90
Bathroom	7.28" x 6.23"	2.22 x 1.90
En-suite	5.94" x 7.71"	1.81 x 2.35

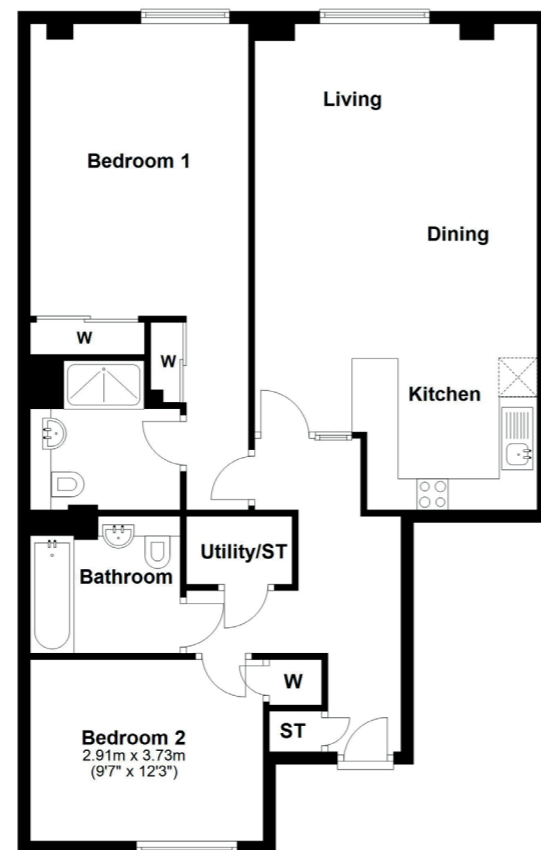


Plots 17, 26, 35 & 44

TYPE M

2 BEDROOM
2 BATHROOM
1 PUBLIC ROOM

Space.	Dim. (ft)	Dim. (m)
Lounge	14.76" x 10.76"	4.50 x 3.28
Dining	14.76" x 7.97"	4.50 x 2.43
Kitchen	9.78" x 7.87"	2.98 x 2.40
Master Bed	11.38" x 26.15"	3.47 x 7.97
Bedroom 2	11.22" x 9.51"	3.42 x 2.90
Bathroom	7.61" x 7.28"	2.32 x 2.22
En-suite	7.61 x 7.45	2.32 x 2.27

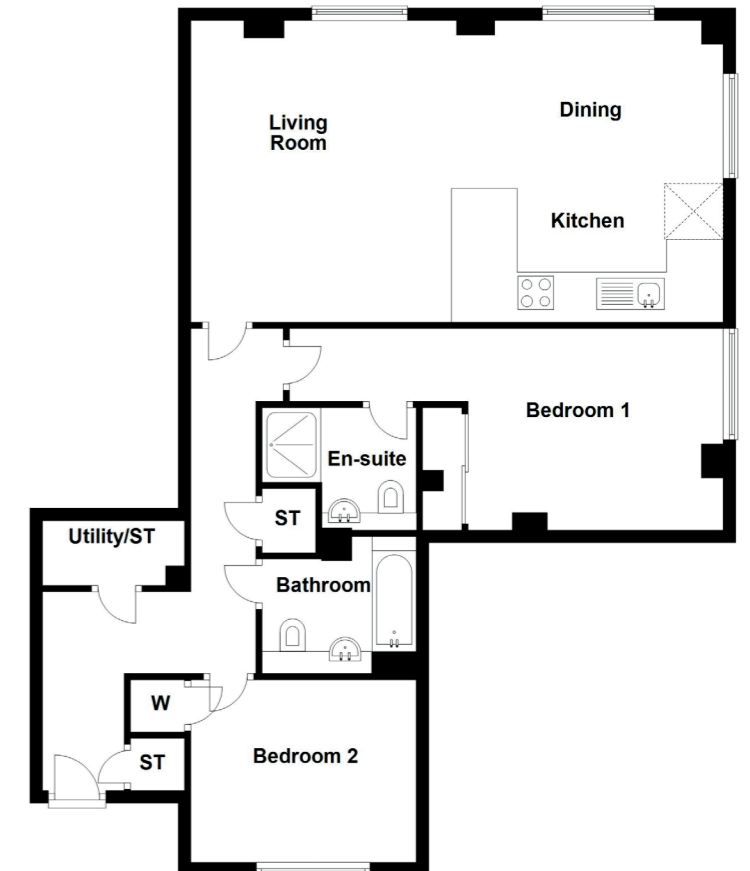


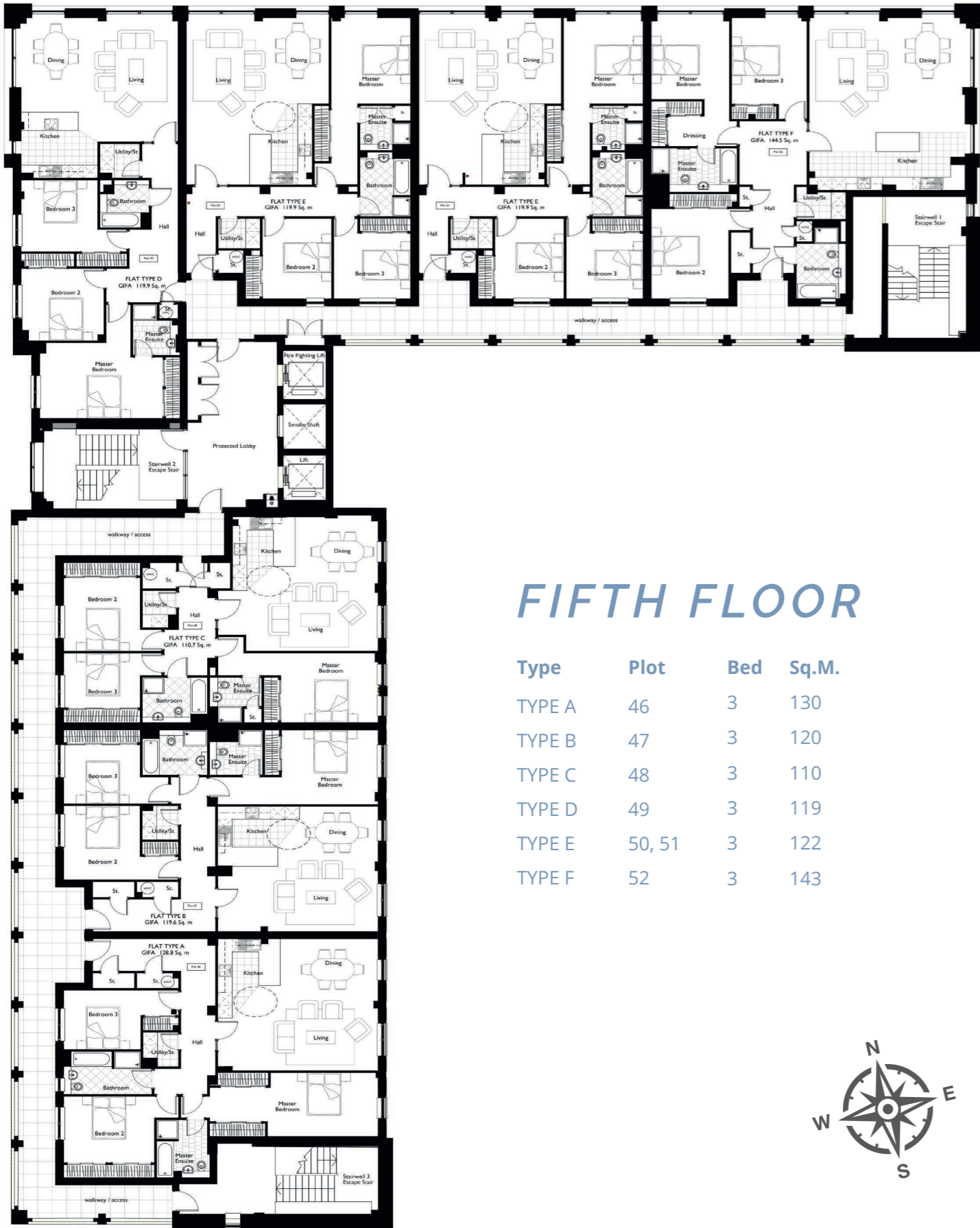
Plots 18, 27, 36 & 45

TYPE N

2 BEDROOM
2 BATHROOM
1 PUBLIC ROOM

Space.	Dim. (ft)	Dim. (m)
Lounge	15.58" x 16.08"	4.75 x 4.90
Dining	12.89" x 8.60"	3.93 x 2.62
Kitchen	12.89" x 6.89"	3.93 x 2.10
Master Bed	21.65" x 10.56"	6.60 x 3.22
Bedroom 2	10.89" x 9.51"	3.32 x 2.90
Bathroom	7.51" x 7.28"	2.29 x 2.22
En-suite	7.51" x 6.14"	2.29 x 1.87





FIFTH FLOOR

Type	Plot	Bed	Sq.M.
TYPE A	46	3	130
TYPE B	47	3	120
TYPE C	48	3	110
TYPE D	49	3	119
TYPE E	50, 51	3	122
TYPE F	52	3	143



Fifth Floor | Plot 46

TYPE A

3 BEDROOM
2 BATHROOM
1 PUBLIC ROOM

Space.

Lounge
Dining
Kitchen
Master Bed
Bedroom 2
Bedroom 3
Bathroom
En-suite

Dim. (ft)

21.85" x 12.02"
12.10" x 9.12"
9.71" x 9.12"
22.97" x 9.74"
15.62" x 10.17"
15.62" x 9.06"
12.01" x 6.56"
7.25" x 8.86"

Dim. (m)

6.66 x 3.66
3.69 x 2.78
2.96 x 2.78
7.00 x 2.97
4.76 x 3.10
4.76 x 2.76
3.66 x 2.00
2.21 x 2.70

Fifth Floor | Plot 47

TYPE B

3 BEDROOM
2 BATHROOM
1 PUBLIC ROOM

Space.

Lounge
Dining
Kitchen
Master Bed
Bedroom 2
Bedroom 3
Bathroom
En-suite

Dim. (ft)

21.85" x 12.02"
11.98" x 7.22"
9.81" x 7.22"
22.93" x 11.38"
15.62" x 11.32"
14.27" x 9.06"
8.86" x 6.89"
7.19" x 6.89"

Dim. (m)

6.66 x 3.66
3.65 x 2.20
2.99 x 2.20
6.99 x 3.47
4.76 x 3.45
4.35 x 2.76
2.70 x 2.10
2.19 x 2.10

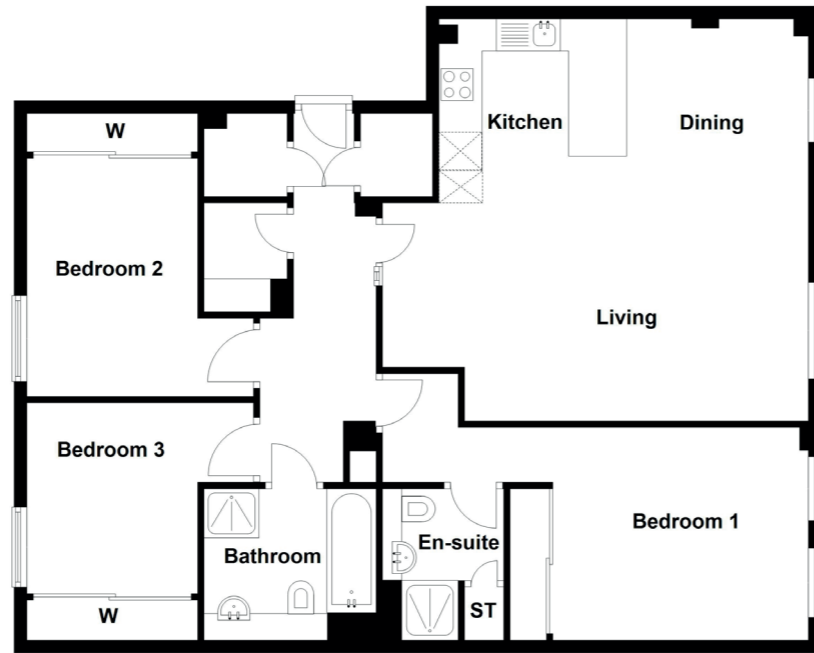


Fifth Floor | Plot 48

TYPE C

3 BEDROOM
2 BATHROOM
1 PUBLIC ROOM

Space.	Dim. (ft)	Dim. (m)
Lounge	21.85" x 8.33"	6.66 x 2.54
Dining	10.04 x 9.19"	3.06 x 2.80
Kitchen	9.81" x 9.19"	2.99 x 2.80
Master Bed	21.82" x 10.70"	6.65 x 3.26
Bedroom 2	13.35" x 11.25"	4.07 x 3.43
Bedroom 3	13.35" x 8.37"	4.07 x 2.55
Bathroom	8.89" x 6.89"	2.71 x 2.10
En-suite	7.09" x 6.89"	2.16 x 2.10

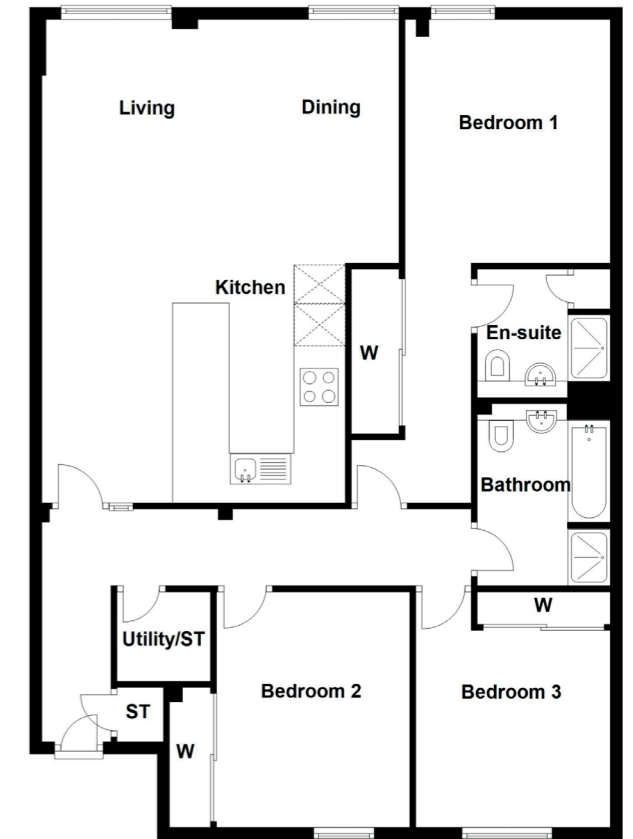


Fifth Floor | Plots 50 & 51

TYPE E

3 BEDROOM
2 BATHROOM
1 PUBLIC ROOM

Space.	Dim. (ft)	Dim. (m)
Lounge	10.73" x 13.12"	3.27 x 4.00
Dining	8.69" x 13.12"	2.65 x 4.00
Kitchen	10.79" x 12.37"	3.29 x 3.77
Master Bed	10.79" x 25.49"	3.29 x 7.77
Bedroom 2	9.38" x 12.27"	2.86 x 3.74
Bedroom 3	10.43" x 12.27"	3.18 x 3.74
Bathroom	6.89" x 9.51"	2.10 x 2.90
En-suite	7.19" x 6.89"	2.19 x 2.10

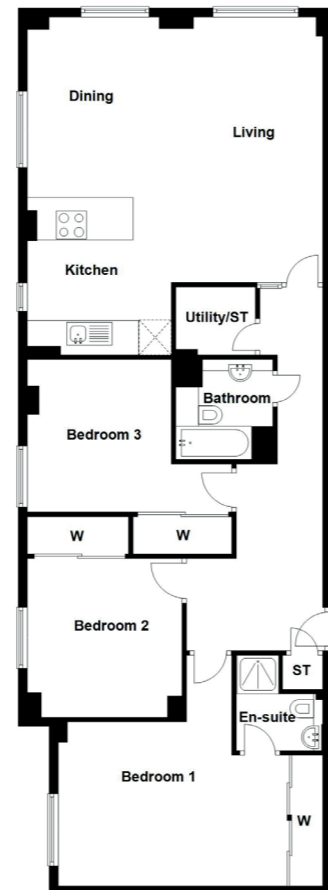


Fifth Floor | Plot 49

TYPE D

3 BEDROOM
2 BATHROOM
1 PUBLIC ROOM

Space.	Dim. (ft)	Dim. (m)
Lounge	11.32" x 12.40"	3.45 x 3.78
Dining	10.01" x 12.40"	3.05 x 3.78
Kitchen	10.43" x 12.11"	3.18 x 3.69
Master Bed	19.06" x 17.39"	5.81 x 5.30
Bedroom 2	11.25" x 11.06"	3.43 x 3.37
Bedroom 3	14.40" x 10.96"	4.39 x 3.34
Bathroom	6.73" x 7.25"	2.05 x 2.21
En-suite	6.14" x 7.78"	1.87 x 2.37



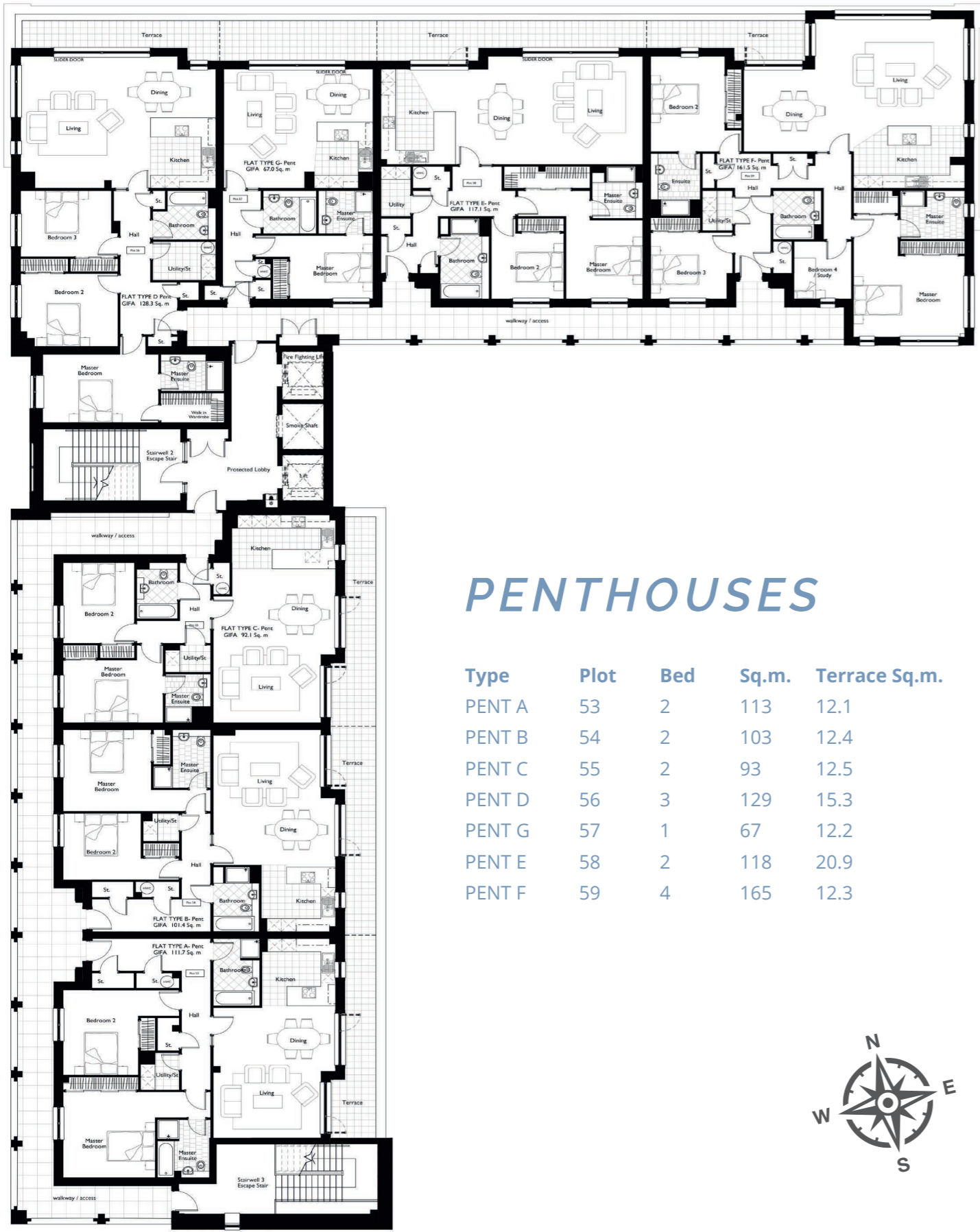
Fifth Floor | Plot 52

TYPE F

3 BEDROOM
2 BATHROOM
1 PUBLIC ROOM

Space.	Dim. (ft)	Dim. (m)
Lounge	10.73" x 17.49"	3.27 x 5.33
Dining	10.50" x 17.49"	3.20 x 5.33
Kitchen	21.98" x 8.86"	6.70 x 2.70
Master Bed	10.63" x 19.13"	3.24 x 5.83
Bedroom 2	13.45" x 13.75"	4.10 x 4.19
Bedroom 3	10.24" x 15.49"	3.12 x 4.72
Bathroom	6.69" x 8.46"	2.04 x 2.58
En-suite	11.68" x 6.69"	3.56 x 2.04





PENTHOUSES

Type	Plot	Bed	Sq.m.	Terrace Sq.m.
PENT A	53	2	113	12.1
PENT B	54	2	103	12.4
PENT C	55	2	93	12.5
PENT D	56	3	129	15.3
PENT G	57	1	67	12.2
PENT E	58	2	118	20.9
PENT F	59	4	165	12.3



Penthouse | Plot 53

PENT A

2 BEDROOM
2 BATHROOM
1 PUBLIC ROOM

Space.	Dim. (ft)	Dim. (m)
Lounge	14.63" x 11.12"	4.46 x 3.39
Dining	16.60" x 8.76"	5.06 x 2.67
Kitchen	10.01" x 10.53"	3.05 x 3.21
Master Bed	20.05" x 13.09"	6.11 x 3.99
Bedroom 2	15.78" x 12.99"	4.81 x 3.96
Bathroom	6.23" x 9.84"	1.90 x 3.00
En-suite	7.22" x 8.86"	2.20 x 2.70
Terrace	4.20" x 31.04"	1.28 x 9.46



Penthouse | Plot 54

PENT B

2 BEDROOM
2 BATHROOM
1 PUBLIC ROOM

Space.	Dim. (ft)	Dim. (m)
Lounge	14.67 x 10.40"	4.47 x 3.17
Dining	16.60" x 10.27"	5.06 x 3.13
Kitchen	10.07" x 10.20"	3.07 x 3.11
Master Bed	20.05" x 12.43"	6.11 x 3.79
Bedroom 2	15.81" x 10.14"	4.82 x 3.09
Bathroom	6.23" x 9.84"	1.90 x 3.00
En-suite	7.78" x 8.86"	2.37 x 2.70
Terrace	4.20" x 31.99"	1.28 x 9.75



Fifth Floor | Plot 55

PENT C

2 BEDROOM
2 BATHROOM
1 PUBLIC ROOM

Space.	Dim. (ft)	Dim. (m)
Lounge	14.63" x 11.61"	4.46 x 3.54
Dining	16.60" x 11.81"	5.06 x 3.60
Kitchen	14.07" x 9.35"	4.29 x 2.85
Master Bed	13.68" x 9.55"	4.17 x 2.91
Bedroom 2	9.68" x 12.30"	2.95 x 3.75
Bathroom	5.58" x 8.53"	1.70 x 2.60
En-suite	6.10" x 7.38"	1.86 x 2.25
Terrace	4.20" x 32.09"	1.28 x 9.78

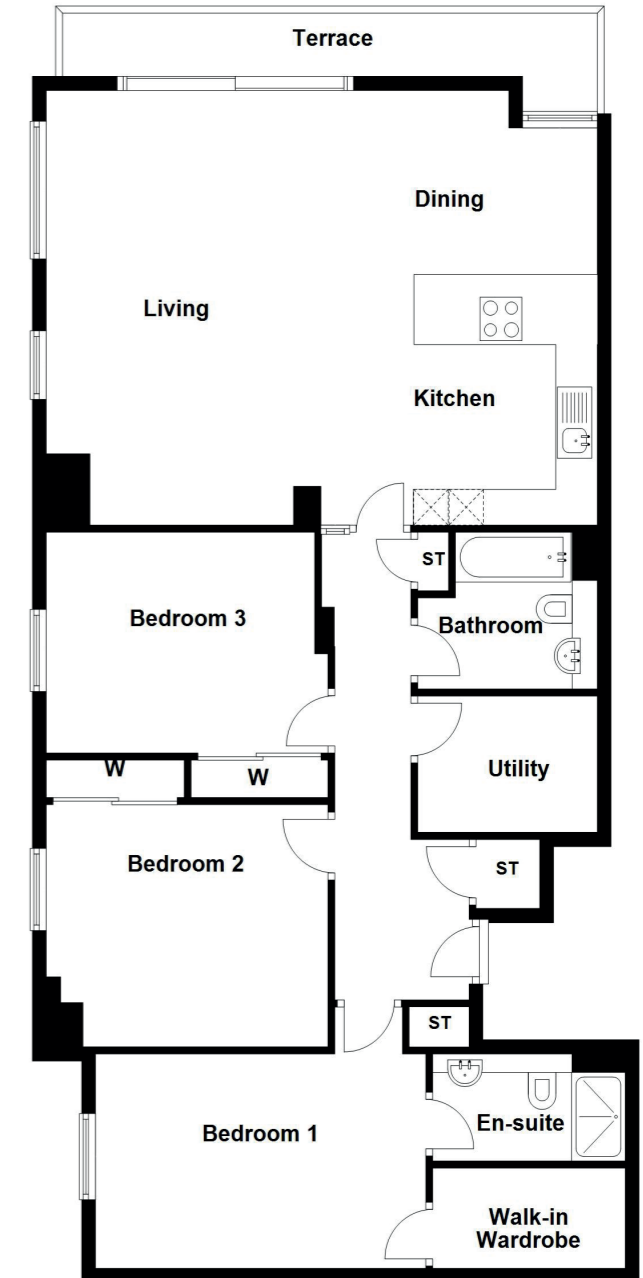


Penthouse | Plot 56

PENT D

3 BEDROOM
2 BATHROOM
1 PUBLIC ROOM

Space.	Dim. (ft)	Dim. (m)
Lounge	17.72" x 20.14"	5.40 x 6.14
Dining	12.63" x 8.37"	3.85 x 2.55
Kitchen	8.86" x 9.78"	2.70 x 2.98
Master Bed	15.75" x 10.37"	4.80 x 3.16
Bedroom 2	13.22" x 11.09"	4.03 x 3.38
Bedroom 3	12.37" x 10.10"	3.77 x 3.08
Bathroom	8.56" x 5.58"	2.61 x 1.70
En-suite	8.56" x 7.48"	2.61 x 2.28
Terrace	6.14 x 26.94	1.87 x 8.21



Penthouse | Plot 57

PENT G

1 BEDROOM
2 BATHROOM
1 PUBLIC ROOM

Space.	Dim. (ft)	Dim. (m)
Lounge	14.63" x 11.15"	4.46 x 3.40
Dining	16.60" x 8.73"	5.06 x 2.66
Kitchen	10.01" x 10.53"	3.05 x 3.21
Master Bed	16.04" x 9.68"	4.89 x 2.95
Bathroom	6.33" x 10.27"	1.93 x 3.13
En-suite	7.05" x 8.86"	2.15 x 2.70
Terrace	6.14" x 21.42"	1.87 x 6.53

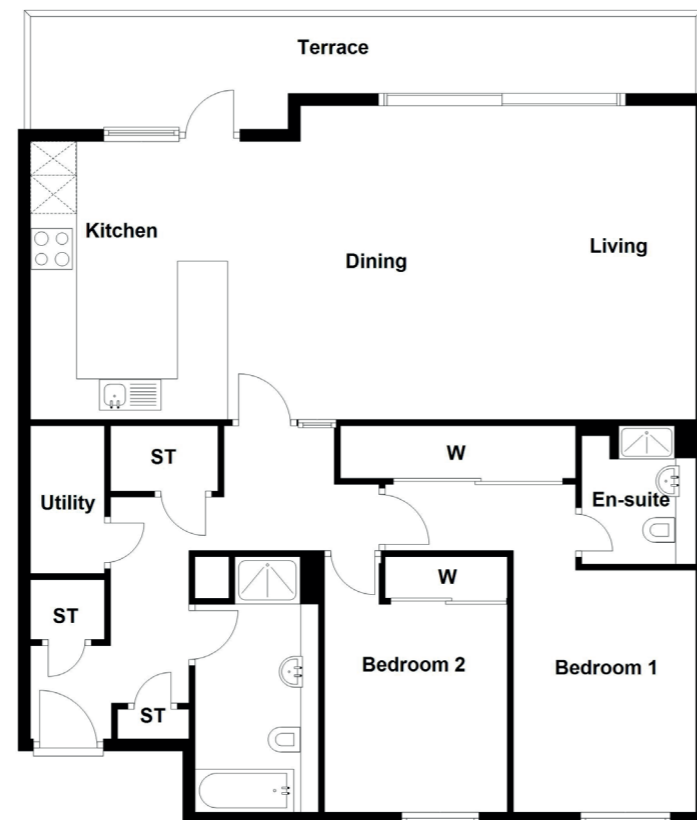


Penthouse | Plot 58

PENT E

2 BEDROOM
2 BATHROOM
1 PUBLIC ROOM

Space.	Dim. (ft)	Dim. (m)
Lounge	16.27" x 16.54"	4.96 x 5.04
Dining	9.55" x 16.54"	2.91 x 5.04
Kitchen	9.78" x 14.53"	2.98 x 4.43
Master Bed	10.47" x 16.54"	3.19 x 5.04
Bedroom 2	9.84" x 10.01"	3.00 x 3.05
Bathroom	6.63" x 12.27"	2.02 x 3.74
En-suite	6.79" x 7.91"	2.07 x 2.41
Terrace	6.14" x 36.75"	1.87 x 11.20

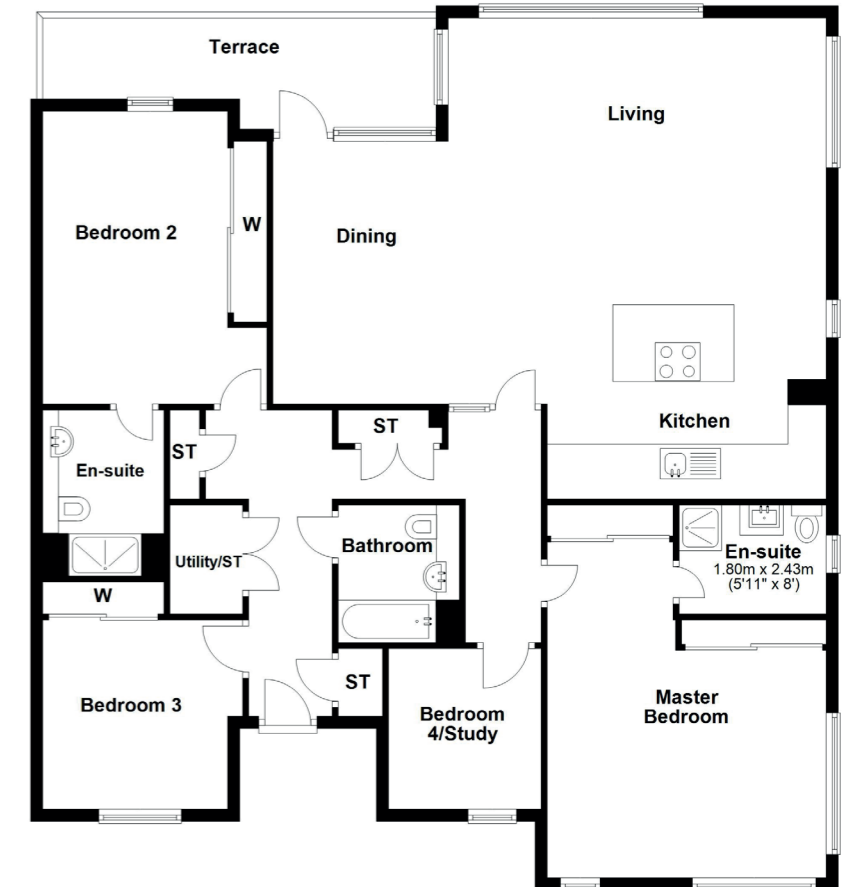


Penthouse | Plot 59

PENT F

4 BEDROOM
3 BATHROOM
1 PUBLIC ROOM

Space.	Dim. (ft)	Dim. (m)
Lounge	20.41" x 16.54"	6.22 x 5.04
Dining	11.06" x 12.60"	3.37 x 3.84
Kitchen	15.09" x 9.51"	4.60 x 2.90
Master Bed	15.09" x 18.60"	4.60 x 5.67
Bedroom 2	14.44" x 10.04"	4.40 x 3.06
Bathroom	6.56" x 8.89"	2.00 x 2.71
Master	8.69" x 7.41"	2.65 x 2.26
Ensuite	6.73" x 9.35"	2.05 x 2.85
Ensuite	11.02" x 10.10"	3.36 x 3.08
Bedroom 3	7.78" x 8.76"	2.37 x 2.67
Bedroom 4	6.14" x 21.59"	1.87 x 6.58





For over 20 years, the FM Group has proudly built and refurbished some of the most iconic buildings throughout Scotland and beyond.

The FM Group was formed in 1997 by Jonathon Milne with the support of his family. The residential and commercial developer started from small beginnings with the refurbishment of a single apartment in Edinburgh and to date, FM has completed some remarkable projects in a variety of locations around the world.

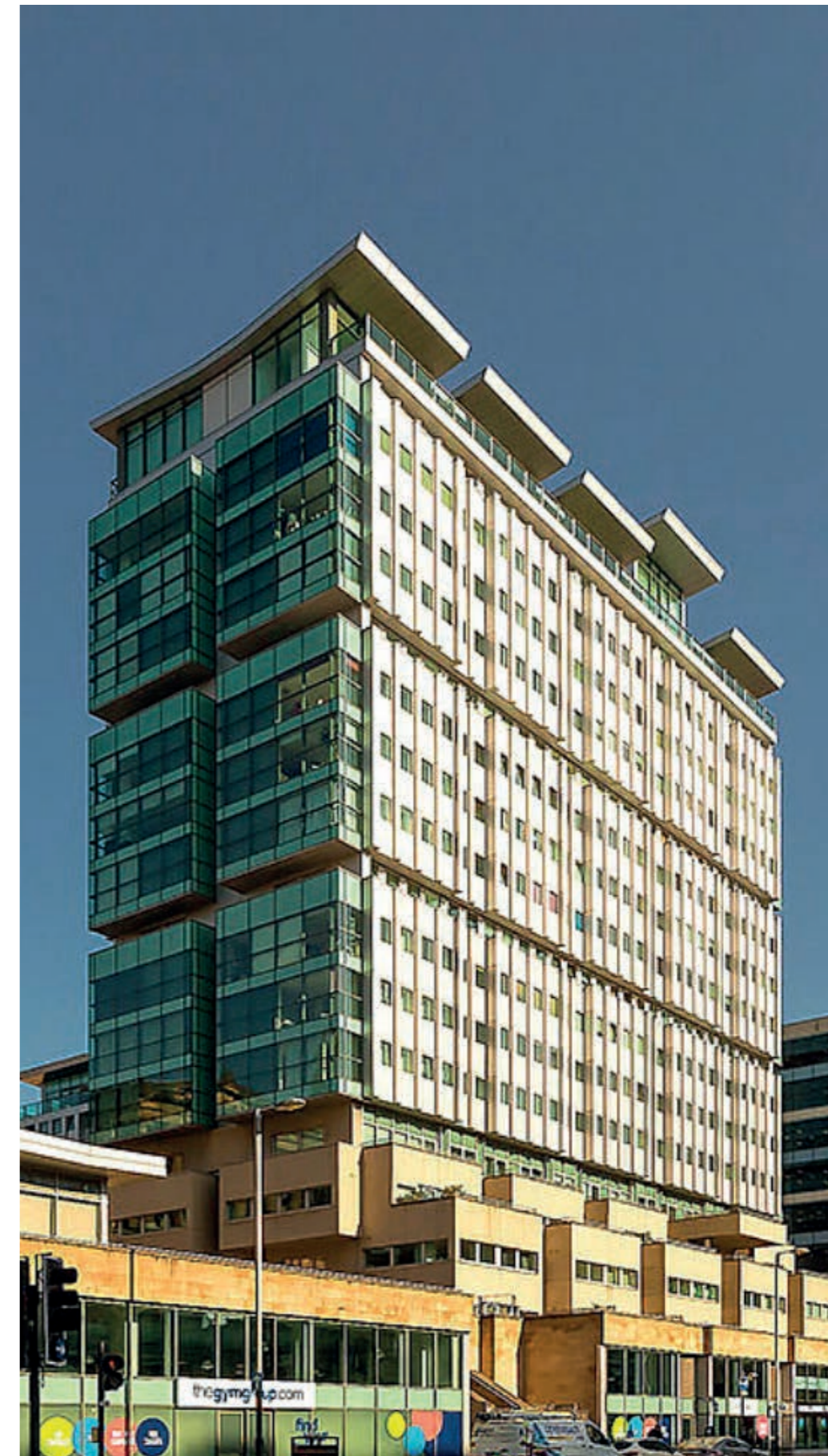
They created thousands of residential homes and millions of square feet of commercial offices, leisure and retail spaces. With a now global portfolio FM has gone on to produce some of the finest developments in the UK and internationally.

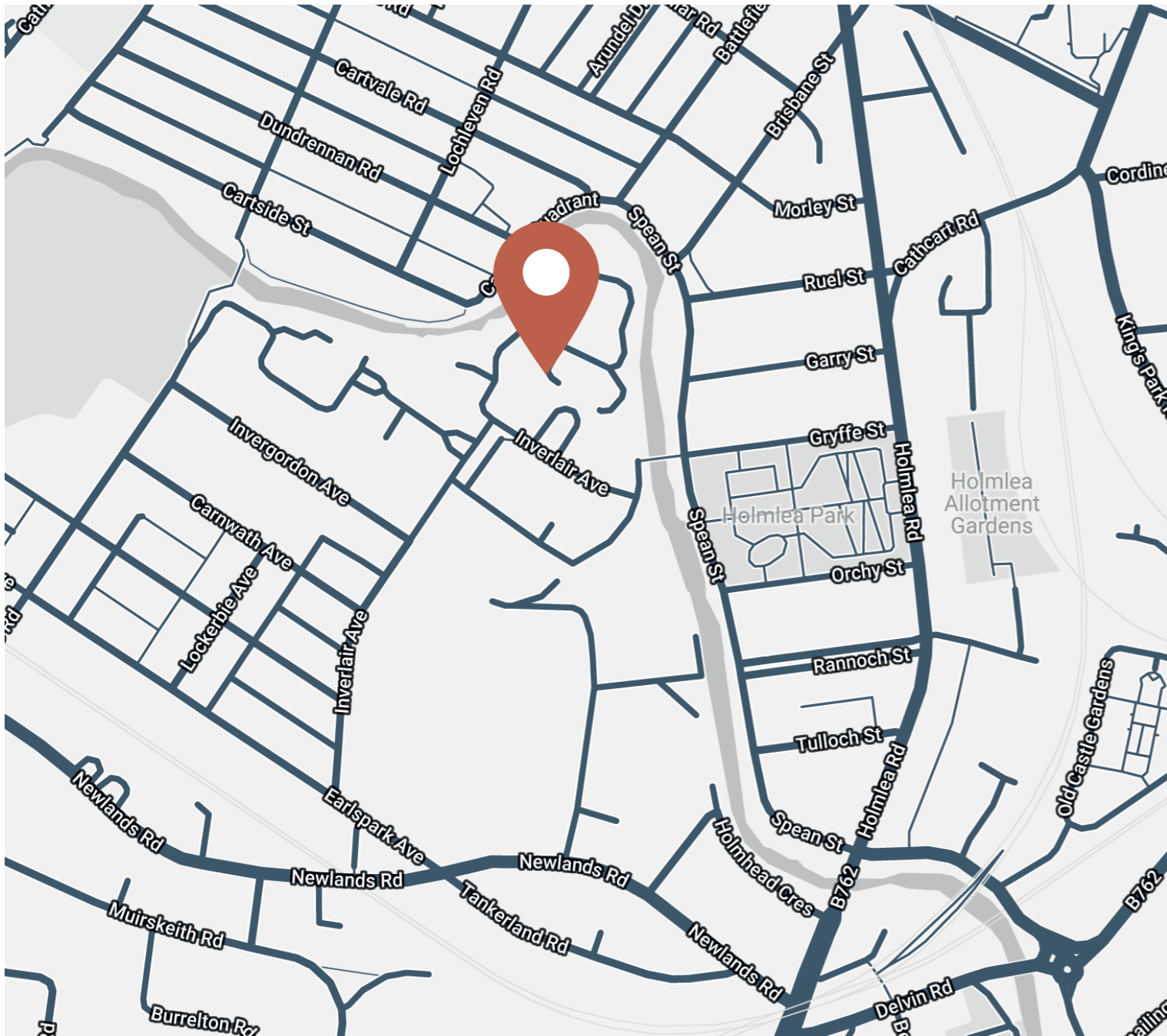
Built on family values and a passion for delivering high quality homes. FM Group was formed by the Forbes & Milne families who have worked together for many years in the property, agricultural and renewable sectors.

As the business has grown, so has its management capabilities. It has focused its core teams and brought in valued technical consultants and partners to assist in creating a dynamic business capable of taking on any challenge or project whatever the scale.

It is currently restoring ruined castles and listed buildings, creating new villages, developing resorts and luxury hotels, and investing in new business ventures. FM also remains committed to agriculture and renewable energy sectors with specific expertise in refurbishing listed buildings, preserving and protecting heritage across Scotland and further afield.

Learn more about us at www.thefmgroup.co.uk





Sat Nav: 80 Inverlair Avenue, Cathcart, Glasgow, G43 2BD

All images and CGI's are purely indicative of style and specification. The final product and specification may differ and all aspects may be subject to change.

Similarly, while every care has been taken in producing this brochure, descriptions, floor plans and sizes/dimensions are approximate and do not form any part of any contract.

Opportunity to choose individual specification is subject to the overall build progress at time of reservation. For full details, please contact your selling agent.

WE'RE **SOLD** ON
YOUR FUTURE



Corum Shawlands
247 Kilmarnock Road, Shawlands, G41 3JF

Tel: 0141 636 7588

Email: shawlands@corumproperty.co.uk

www.corumproperty.co.uk