



**1423 POLLOKSHAWS ROAD**

SHAWLANDS

[www.corumproperty.co.uk](http://www.corumproperty.co.uk)



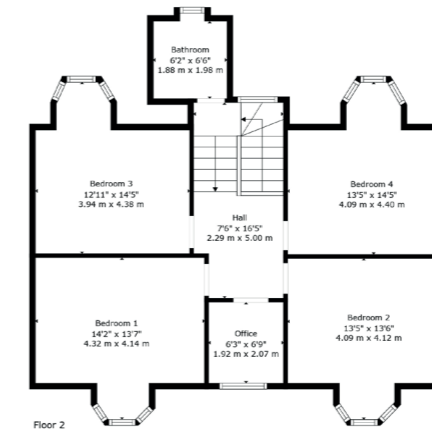
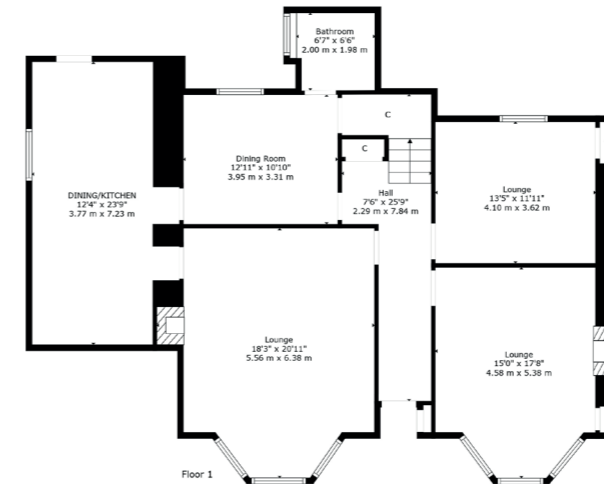
4 | BEDROOMS  
2 | BATHROOMS  
4 | PUBLIC ROOMS

A substantial sandstone detached villa set within a desirable pocket of Shawlands, offering generous accommodation and many period features.

- Sandstone detached villa
- Flexible accommodation over 2 levels
- 4 bedrooms, 4 public rooms
- Dining kitchen, 2 bathrooms, office
- Many striking period features retained
- Large garden grounds with an abundance of parking
- Thriving amenities within half a mile

Amenities

1423 Pollokshaws Road is only half a mile from excellent amenities including the bustling coffee houses, restaurants, gastropubs and bakeries of Shawlands. Recreational pursuits within the area are available at Pollok Park, Maxwell Park or Queen's Park. Shields Road underground station is less than two miles away and the M77 connects the Southside of Glasgow to Scotland's motorway network.



Sat Nav:  
1423 Pollokshaws Road, Shawlands, G41 3RC

SS4708

\*All measurements and distances are approximate. Floorplans are for illustration purposes and may not be to scale.

For the full home report visit  
[www.corumproperty.co.uk](http://www.corumproperty.co.uk)



WE'RE **SOLD** ON  
YOUR FUTURE



Corum Shawlands  
247 Kilmarnock Road, Shawlands, G41 3JF

**Tel:** 0141 636 7588

**Email:** [shawlands@corumproperty.co.uk](mailto:shawlands@corumproperty.co.uk)

[www.corumproperty.co.uk](http://www.corumproperty.co.uk)