



1/1, 66 RAVENSWOOD DRIVE

WAVERLEY PARK

www.corumproperty.co.uk



c o r u m

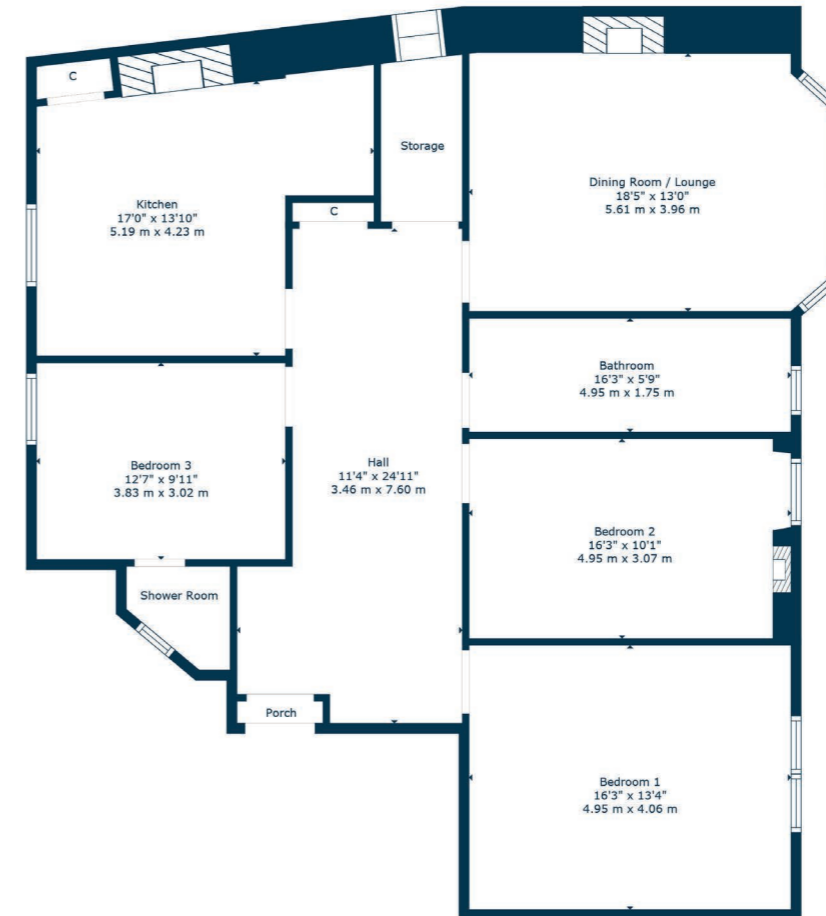
3 | BEDROOMS
2 | BATHROOMS
1 | PUBLIC ROOM

Occupying a bright first floor position with particularly private aspects front and rear, this well-proportioned Victorian tenement originates from the early 1900s. On the doorstep of the celebrated community of Waverly Park, the home is one of only four who have access through the door at 66 Ravenswood Drive.

- Bright first floor Victorian tenement
- Well-proportioned accommodation
- Three double sized bedrooms
- Many original features
- Fitted dining kitchen with recess
- Bathroom & en-suite shower
- Thriving local amenities nearby

Amenities

66 Ravenswood Drive is within half a mile of numerous amenities including the coffee houses, restaurants, gastropubs and bakeries of Shawlands. More extensive facilities are available at the Crossmyloof Morrisons store or the Sainsburys store on Darnley Road. Recreational pursuits within the area are available at Queens Park, Maxwell Park or Pollok Country Park. Both Crossmyloof and Shawlands train stations are approximately 500 yards away, Shields Road underground station is one mile away and junction 1 of the M77 connects the Southside of Glasgow to Scotland's motorway network.



Sat Nav:
66 Ravenswood Drive, Waverley Park, G41 3UN
SS4709

*All measurements and distances are approximate. Floorplans are for illustration purposes and may not be to scale.

For the full home report visit www.corumproperty.co.uk



WE'RE **SOLD** ON
YOUR FUTURE



Corum Shawlands
247 Kilmarnock Road, Shawlands, G41 3JF

Tel: 0141 636 7588

Email: shawlands@corumproperty.co.uk

www.corumproperty.co.uk