



**48 HOLMHEAD ROAD**

OLD CATHCART

[www.corumproperty.co.uk](http://www.corumproperty.co.uk)



**3 | BEDROOMS**  
**1 | BATHROOM**  
**2 | PUBLIC ROOMS**

A superb main door lower conversion, with a full 5 apartments spanning the entire ground floor of this attractive detached villa.

- Main door lower conversion
- 3 bedrooms
- 2 public rooms
- Modern bathroom and kitchen
- Beautifully stocked enclosed gardens
- Driveway and garage
- Many original features

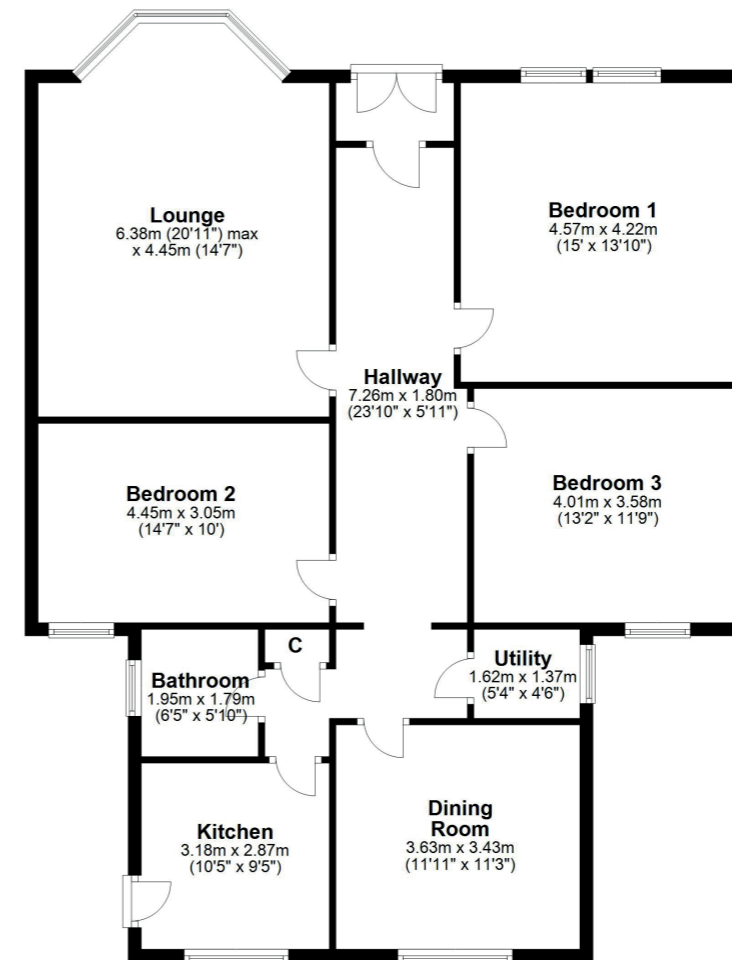
**Amenities**

The property is positioned within walking distance of shops and amenities upon Clarkston Road where thriving coffee shops, restaurants and delicatessens can be found. More extensive amenities are available at the Sainsbury's store at Muirend, and The Silverburn Shopping Mall is a short drive to the South West.

Recreational pursuits within the general area are varied including well maintained municipal parks, health clubs/gyms, golf courses both public and private.

Schooling can be found locally at both primary and secondary level, there are also a number of pick-up points on the South Side for Glasgow's leading independent schools.

Frequent public transport services provide rapid commuter access to the city centre, the local railway station is approximately 200 yards walk.



**Sat Nav:**  
48 Holmhead Road, Old Cathcart, G44 3AR

SS4196

\*All measurements and distances are approximate. Floorplans are for illustration purposes and may not be to scale.

For the full home report visit [www.corumproperty.co.uk](http://www.corumproperty.co.uk)



WE'RE **SOLD** ON  
YOUR FUTURE



C O R U M

Corum Shawlands  
247 Kilmarnock Road, Shawlands, G41 3JF

**Tel:** 0141 636 7588

**Email:** [shawlands@corumproperty.co.uk](mailto:shawlands@corumproperty.co.uk)

[www.corumproperty.co.uk](http://www.corumproperty.co.uk)