



21 THORNCLIFFE GARDENS

STRATHBUNGO

www.corumproperty.co.uk



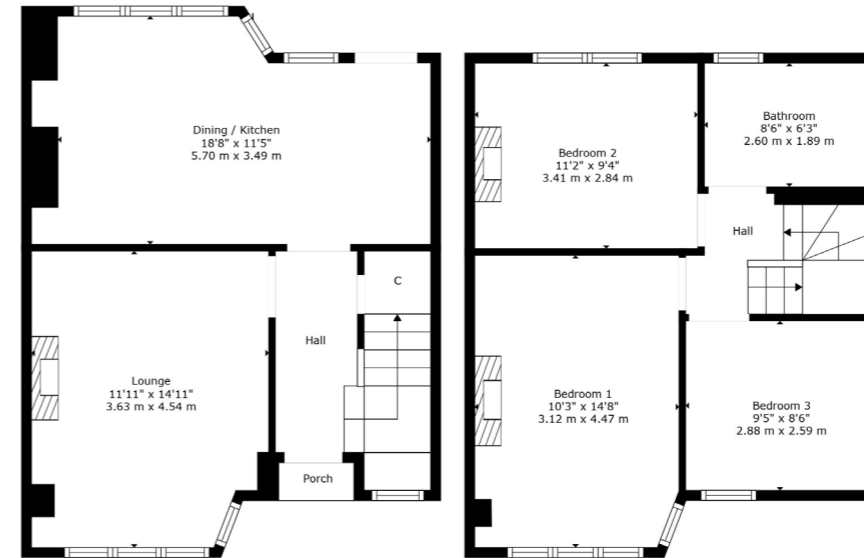
3 | BEDROOMS
1 | BATHROOM
1 | PUBLIC ROOM

Set within the thriving hub of Strathbungo, an incredible red sandstone fronted mid terrace villa offering a modern specification and enclosed southerly facing rear gardens

- Traditional mid terrace villa
- Generous lounge, full width dining kitchen
- Three well proportioned bedrooms
- Floored and lined attic space with fixed staircase
- Double glazing, gas central heating, fresh modern decor
- Landscaped gardens to front and rear

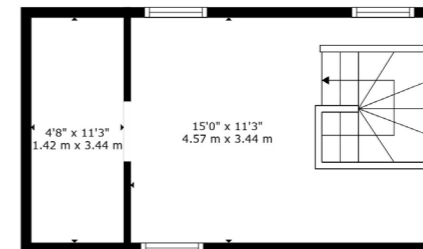
Amenities

21 Thorncliffe Gardens is found in the thriving Southside community of Strathbungo where independent restaurants, delicatessens, bars and coffee houses are all within walking distance. Queens Park is approximately 300 yards away providing recreational space, tennis courts and football pitches. Crossmyloof, Pollokshields West and Queens Park train stations are within half a mile of the front door.



Floor 1

Floor 2



Floor 3

Sat Nav:
 21 Thorncliffe Gardens, Strathbungo, G41 2DE

SS4688

*All measurements and distances are approximate. Floorplans are for illustration purposes and may not be to scale.

For the full home report visit
www.corumproperty.co.uk



WE'RE **SOLD** ON
YOUR FUTURE



Corum Shawlands
247 Kilmarnock Road, Shawlands, G41 3JF

Tel: 0141 636 7588

Email: shawlands@corumproperty.co.uk

www.corumproperty.co.uk