



1/1, 113 SOMERVILLE DRIVE

MOUNT FLORIDA

www.corumproperty.co.uk



2 | BEDROOMS
1 | BATHROOM
1 | PUBLIC ROOM

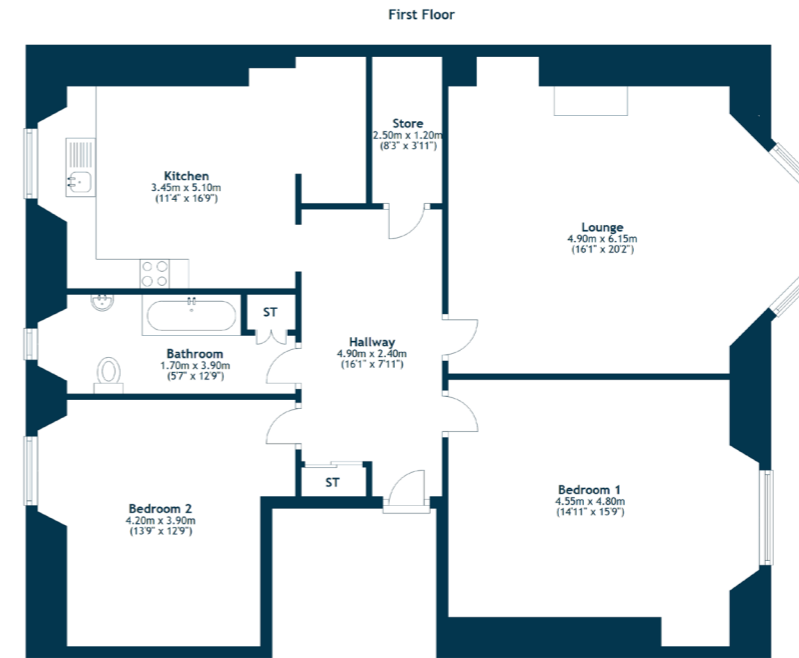
Occupying a bright first floor position within this attractive blonde sandstone tenement building, a full two bedroom flat presented to the market in great order.

- First floor tenement flat
- 2 large double bedrooms
- Impressive bay window lounge
- Modern dining sized kitchen with recess
- Contemporary bathroom with under floor heating
- GCH, DG, secure entry system, communal gardens
- Fresh modern décor and original features

Amenities

113 Somerville Drive is positioned within minutes' walk of local shops and amenities upon Cathcart Road and Battlefield Road, whilst more extensive amenities are available within central Shawlands, the Asda Store on Prospecthill Road or the Morrisons store at Crossmyloof. Queens Park is a short distance away providing recreational space as well as tennis courts and all-weather football pitches.

Frequent public transport services provide rapid commuter access to the city centre, the local railway station at Mount Florida is approximately half a mile away.



Flat 1 -1, 113 Somerville Drive, Glasgow

Sat Nav:
 1/1, 113 Somerville Drive, Mount Florida, G42 9BH

SS4701

*All measurements and distances are approximate. Floorplans are for illustration purposes and may not be to scale.

For the full home report visit
www.corumproperty.co.uk



WE'RE **SOLD** ON
YOUR FUTURE



Corum Shawlands
247 Kilmarnock Road, Shawlands, G41 3JF

Tel: 0141 636 7588
Email: shawlands@corumproperty.co.uk

www.corumproperty.co.uk