



1/1, 36 CARTHA STREET

SHAWLANDS

www.corumproperty.co.uk


c o r u m

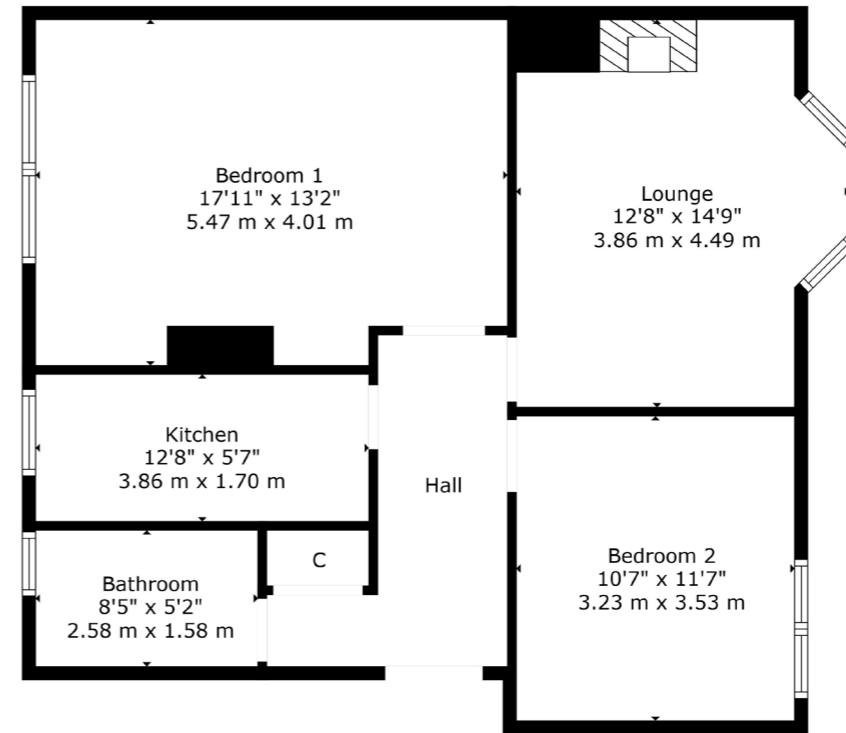
2 | BEDROOMS
1 | BATHROOM
1 | PUBLIC ROOM

Situated in this central Shawlands address, a beautifully presented two bedroom flat offering easy access to all local amenities.

- Two double bedrooms
- Contemporary styled kitchen with complementary work surfaces
- Luxurious three piece bathroom
- Fresh, neutral décor throughout
- Double glazed, gas central heating

Amenities

36 Cartha Street is in the centre of Shawlands where coffee houses, shops, restaurants and bars can be found. More extensive facilities are available at the Morrisons stores in Newlands or Crossmyloof. Local recreational pursuits are found within one mile of the front door at Queens Park where nature walks, football pitches, tennis courts and a fortnightly farmers market can be found. Frequent public transport services (both bus and rail) provide rapid commuter access to the City Centre.



Sat Nav:
36 Cartha Street, Shawlands, G41 3HQ

SS4674

*All measurements and distances are approximate.
Floorplans are for illustration purposes and may not be to scale.

For the full home report visit
www.corumproperty.co.uk



WE'RE **SOLD** ON
YOUR FUTURE



Corum Shawlands
247 Kilmarnock Road, Shawlands, G41 3JF

Tel: 0141 636 7588
Email: shawlands@corumproperty.co.uk

www.corumproperty.co.uk