



**28 OVERWOOD DRIVE**

KING'S PARK

[www.corumproperty.co.uk](http://www.corumproperty.co.uk)



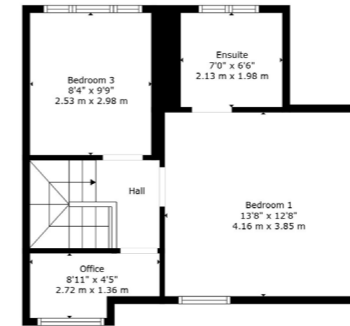
**3 | BEDROOMS**  
**2 | BATHROOM**  
**2 | PUBLIC ROOM**

Located in this popular King's Park address, this semi-detached property has been painstakingly upgraded and developed by the current owners creating a fantastic family home. Early viewing is highly recommended.

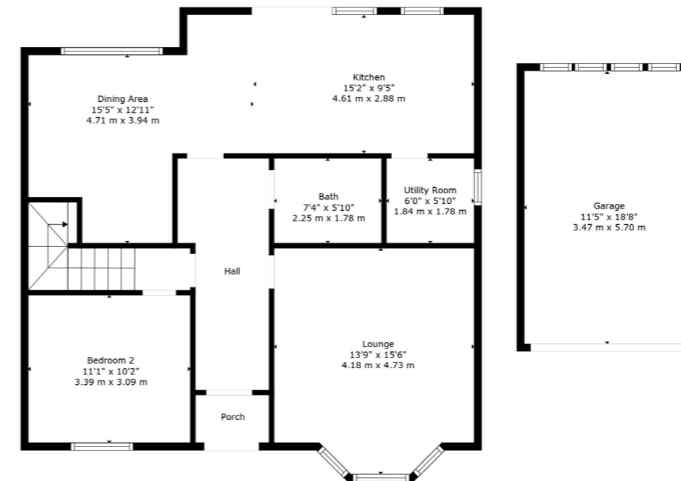
- Lovely semi-detached home in excellent order
- Presently three bedrooms & two public spaces
- Full width living dining kitchen opening to garden
- Enclosed level garden with southerly aspects to rear
- Off street driveway parking to the front

**Amenities**

28 Overwood Drive is within one mile of shops and amenities on Aikenhead Road, Carmunnock Road and Cathcart Road where coffee shops, convenience stores and restaurants can be found. More extensive amenities are available at the Sainsburys store in Muirend, the 24 Asda store at Toryglen or Silverburn shopping centre near Pollok. King's Park is only 500 yards away and there are various health clubs, gyms, golf courses and tennis clubs scattered throughout Glasgow's Southside. Reputable state schooling is available locally at primary and secondary level.



Floor 2



Floor 1



**Sat Nav:**  
 28 Overwood Drive, Kings Park, G44 5SG

**SS4672**

\*All measurements and distances are approximate. Floorplans are for illustration purposes and may not be to scale.

For the full home report visit  
[www.corumproperty.co.uk](http://www.corumproperty.co.uk)





WE'RE **SOLD** ON  
YOUR FUTURE



C O R U M

Corum Shawlands  
247 Kilmarnock Road, Shawlands, G41 3JF

**Tel:** 0141 636 7588

**Email:** [shawlands@corumproperty.co.uk](mailto:shawlands@corumproperty.co.uk)

[www.corumproperty.co.uk](http://www.corumproperty.co.uk)