



135 TERREGLES AVENUE

POLLOKSHIELDS

www.corumproperty.co.uk





5 | BEDROOMS

2 | BATHROOMS

1 | WC

3 | PUBLIC ROOMS

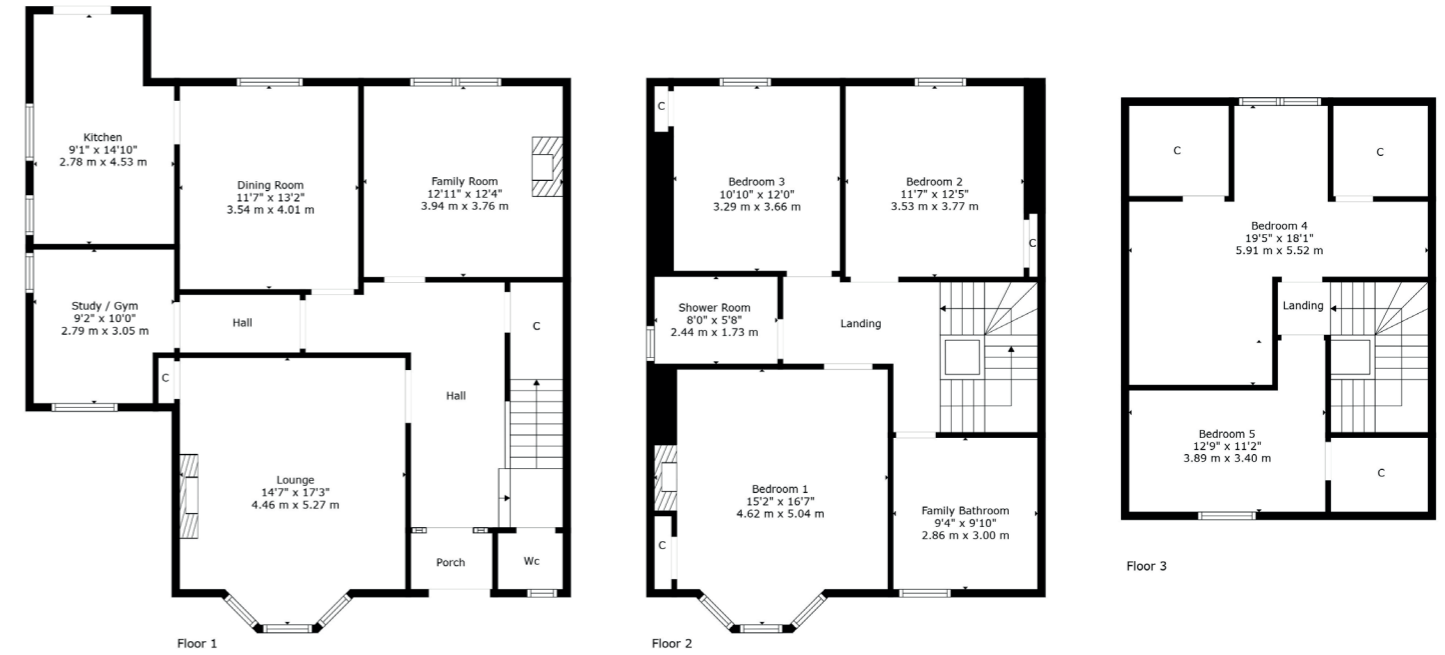
A striking eight apartment blonde sandstone semi-detached villa set over three main levels, with extensive garden grounds which are South East facing to the rear with good privacy.

Set within established grounds in this sought after residential enclave, a traditional sandstone semi-detached villa originally dating from 1900 or thereby. The property offers versatile family accommodation within eight principal apartments formed over three levels. A wealth of period detailing is retained, most notably original ceiling cornice work, plaster work and woodwork.

The complete accommodation extends to: entrance vestibule, welcoming hallway with cloakroom/WC and a useful study (currently utilised as a gym), bay windowed formal lounge with feature fireplace, comfortable family room to the rear and a dining room with inbuilt furniture and wine fridge, all of which leads to the impressive kitchen with vaulted ceiling which hosts a broad range of units, quality integrated appliances, breakfast bar and French doors to gardens. An original staircase leads to first floor revealing three generous bedrooms (main bedroom with beautiful fireplace), a well appointed shower room and a large reconfigured main family bathroom with standalone roll top bath and walk-in shower. A further staircase leads to an additional two bedrooms, the rear of which has a dormer window with open views.

The specification includes: gas central heating, double glazing and driveway parking for a number of cars. Garden grounds are well maintained and well stocked. Grounds to the rear are surprisingly private, enclosed and South East facing.





The property is positioned within walking distance of shops and amenities upon Nithsdale Road and Kildrostan Street where thriving coffee shops, restaurants and delicatessens can be found. More extensive amenities are available at the Marks and Spencer's store at Queens Park, the Sainsburys Local on Darnley Road, the Morrisons store at Crossmyloof, Giffnock or Newlands and the shopping mall at Silverburn is a short drive to the West.

Recreational pursuits are varied namely at Clydesdale Cricket Club, Titwood Bowling and Tennis Club, Maxwell Park, Pollok Country Park where Pollok House and the world famous Burrell collection can be found, also Bellahouston Park & its Ski and Sports centre.

SS4664 | Sat Nav: 135 Terregles Avenue, Pollokshields, G41 4DG

For the full home report visit www.corumproperty.co.uk

* All measurements and distances are approximate Floorplans are for illustration purposes and may not be to scale.



WE'RE **SOLD** ON
YOUR FUTURE



Corum Shawlands
247 Kilmarnock Road, Shawlands, G41 3JF

Tel: 0141 636 7588
Email: shawlands@corumproperty.co.uk

www.corumproperty.co.uk